

Office of Student Assignment



WAKE COUNTY
PUBLIC SCHOOL SYSTEM

WCPSS 2026-2027 School Enrollment Plan

Initial Draft

A Multi-year Approach to Growth Management

*Presented to the Board of Education
Board Work Session | September 2, 2025*



Goals for This Session

*By the end of today's discussion,
Board members will have had
an opportunity to...*

- *Review the assignment planning process and Board Policy 4150 as they relate to developing student assignment plans*
- *Review initial staff recommendations for the 2026-2027 School Enrollment Plan*
- *Review the timeline for plan review and approval, including public engagement activities*
- *Share initial thoughts and feedback for staff review and consideration*

Strategic Plan Alignment

Family & Community Engagement

Aim 6: District Communications Structures

Provide clear, accessible, and consistent information about family involvement opportunities.

Aim 12: Community Engagement

Build strong relationships among staff, families, and community organizations in order to share resources and promote well-being.

12.1 Increase support of non-English speaking families

Ensure multilingual and non-English speaking families and all schools are aware of the support and services available from the district to help them engage fully with their school and our district.

12.2 Build strong community partnerships

Develop and share with district leaders a systemic approach to building partnerships with and seeking input and support from community organizations with a focus on partners in underserved communities.

Strategic Plan Alignment

(continued)

Operational Effectiveness

Aim 14: Differentiated Resource Allocation

Differentiate resource allocation to provide PreK-12 students with equitable access to high-quality teachers and principals, and sufficient support services.

14.3 Evaluate School Choice, Planning and Assignment Programs

Evaluate student assignment policy, practices, and magnet programs to foster the balance and socio-economic integration of schools, in alignment with the magnet objectives of reducing high concentrations of poverty, promoting school integration and diversity, maximizing use of school facilities, and providing innovative and/ or expanded educational opportunities.

Aim 19: Transportation Upgrades

Evaluate practices to ensure safe, timely, efficient, and reliable transportation services.

19.2 Incorporate Bus Routing in Student Assignment Decisions

Problem-solve bus route challenges with strategic student assignment changes.



Information & Updates

www.wcpss.net/2026enrollmentproposal

www.wcpss.net/assignmentplanning

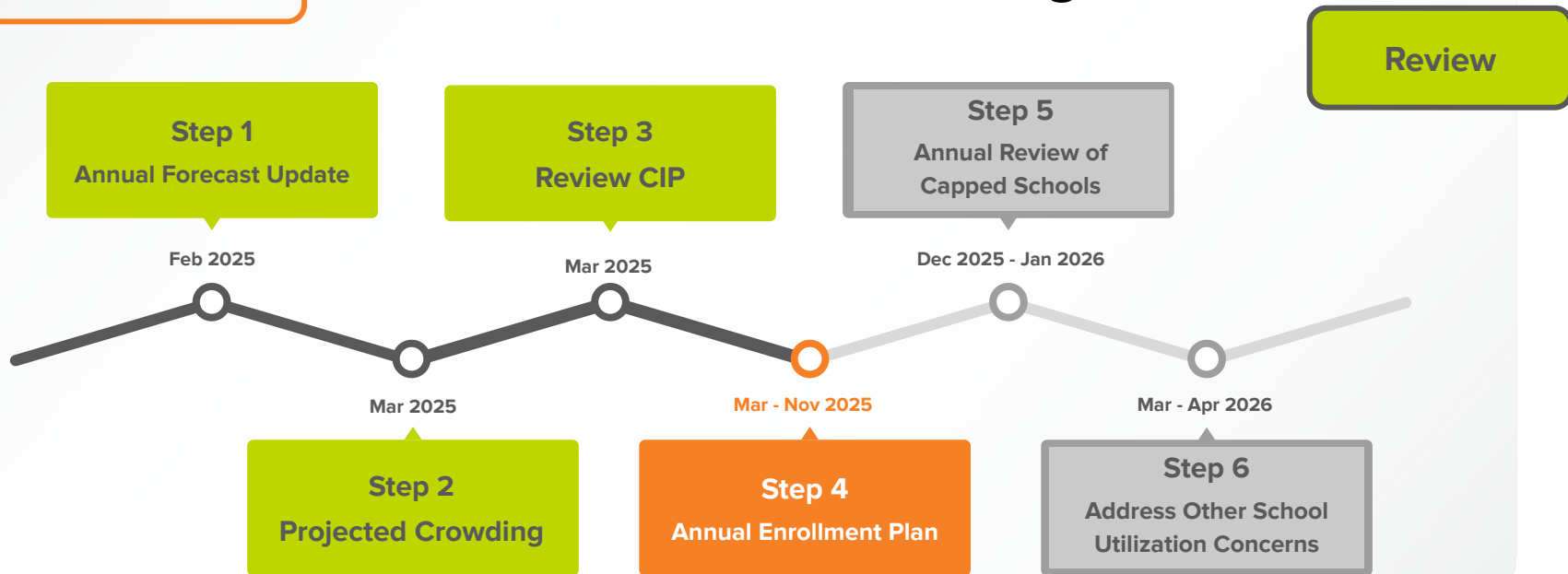
**Review Materials Included
with Agenda Item**

Review*

Assignment Planning Process & Board Policy 4150 including Projected Enrollment Changes, School Crowding, Facilities Plans, & Public Feedback

**Information included was previously presented and reviewed at a Board Work Session. Complete presentation materials are posted to the Board's Simbli site. Meeting dates in 2025 include: March 4, May 6, May 20, June 3 & June 24.*

2026-2027 School Enrollment Planning Process



1

Presentation of the Annual Membership Forecast (1-year and 10-year projections)

2

Review of Projected Crowding for the Next School Year

3

Review of Capital Improvement Plan (CIP) Updates (7-year plan)

4

Preparation of the Annual Enrollment Plan

5

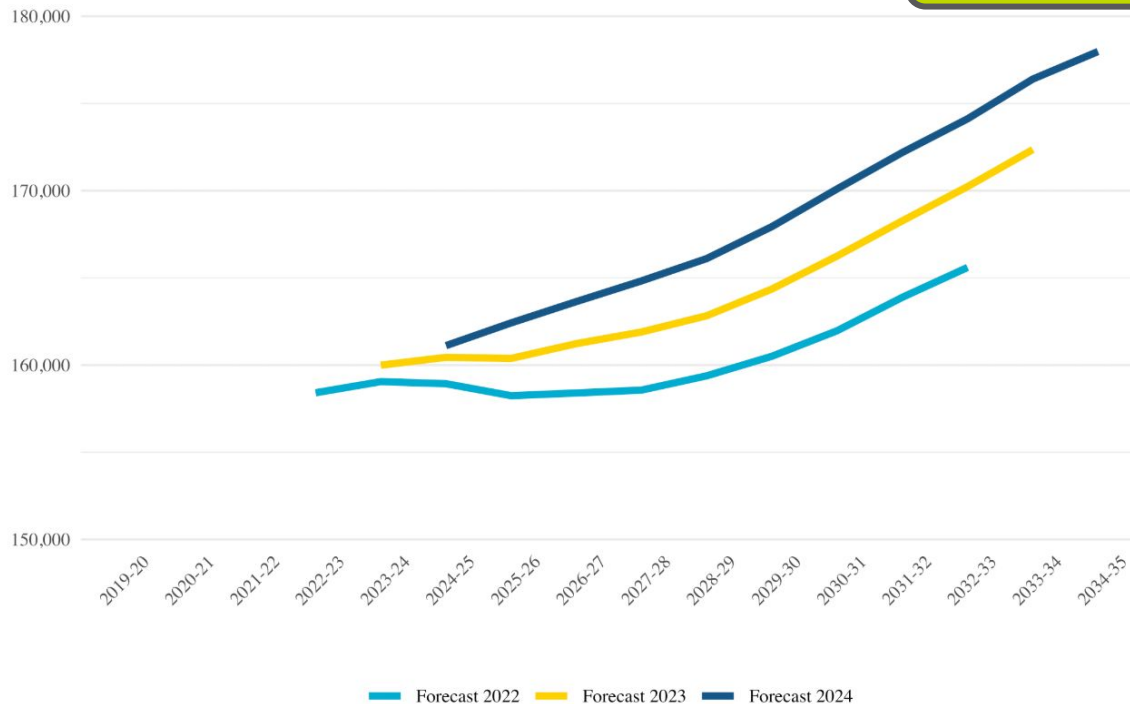
Review and Approval of Capped Schools due to Overcrowding Concerns

6

Review of Options to Address Other School Utilization Concerns

Presentation of the Annual Membership Forecast (1-year and 10-year projections)

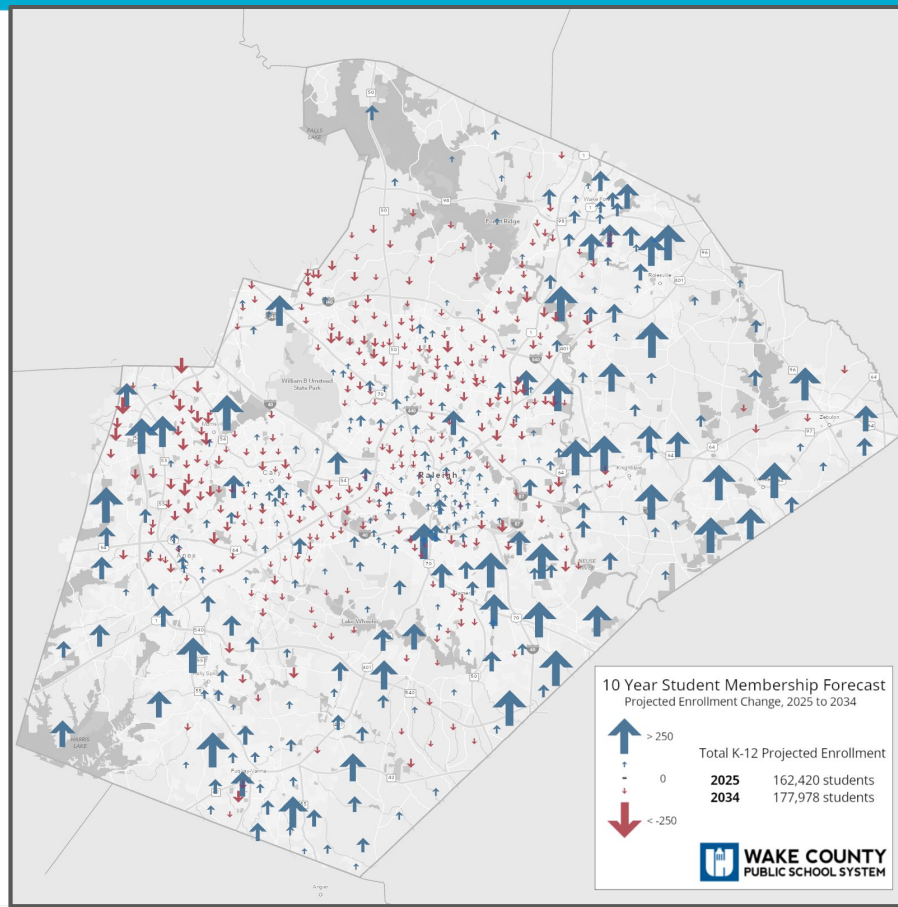
Review



Source: Demographic Analytics Advisors and Carolina Demography

Projected Enrollment Change: 2025 to 2034

Review



1

Presentation of the Annual Membership Forecast (1-year and 10-year projections)

2

Review of Projected Crowding for the Next School Year

3

Review of Capital Improvement Plan (CIP) Updates (7-year plan)

4

Preparation of the Annual Enrollment Plan

5

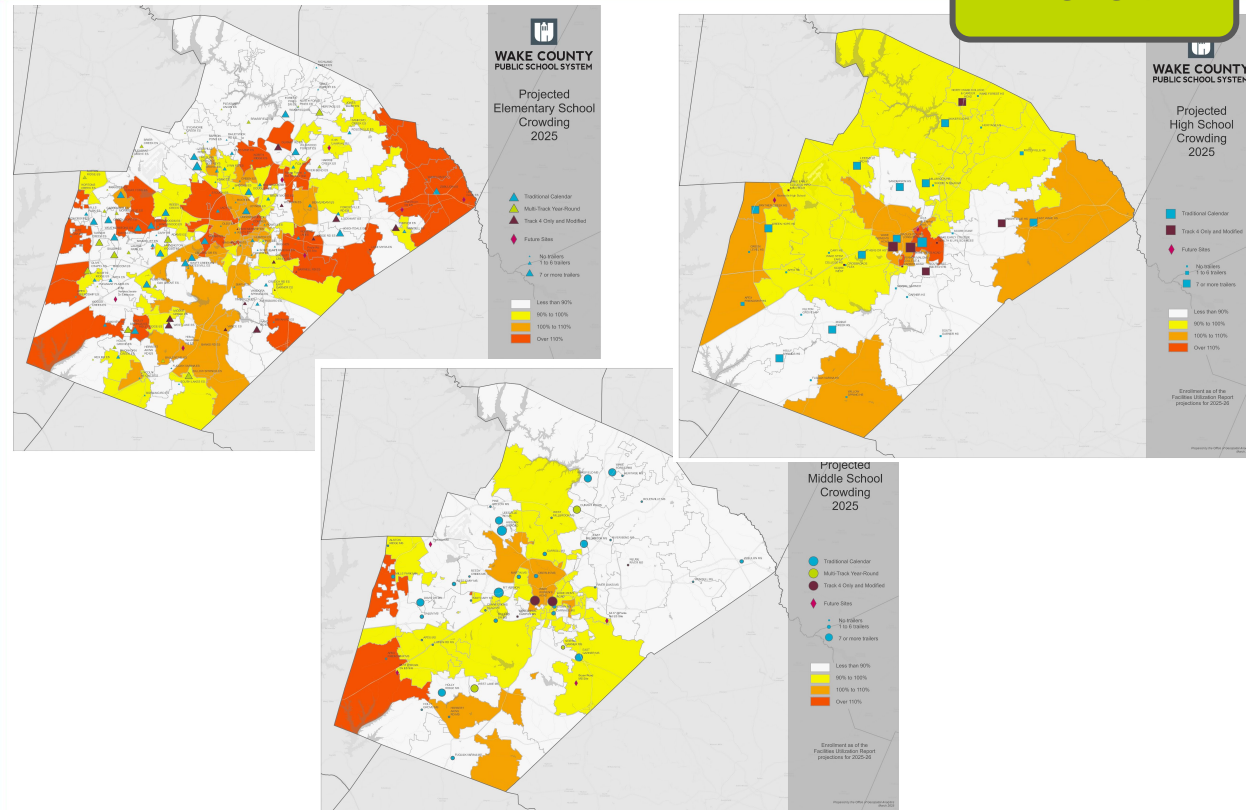
Review and Approval of Capped Schools due to Overcrowding Concerns

6

Review of Options to Address Other School Utilization Concerns

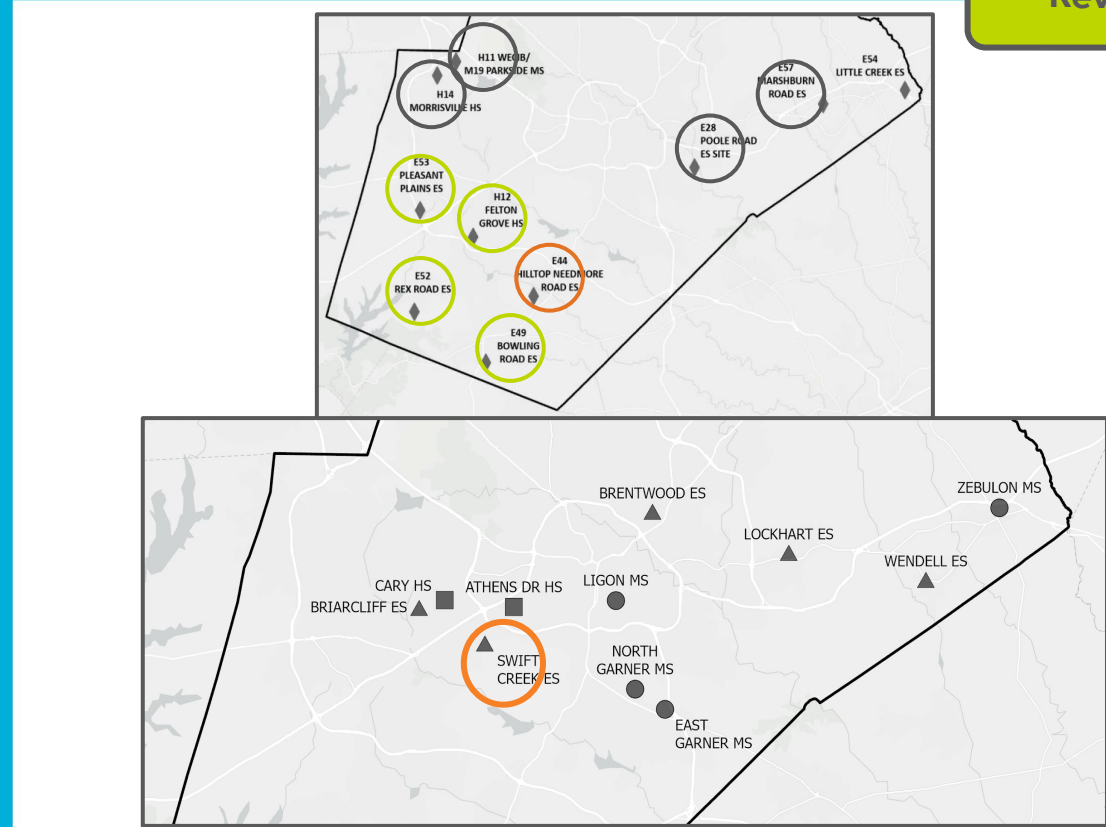
Review of Projected Crowding for the Next School Year

Review



Review of Capital Improvement Plan (CIP) Updates (7-year plan)

Review



1

Presentation of the Annual Membership Forecast (1-year and 10-year projections)

2

Review of Projected Crowding for the Next School Year

3

Review of Capital Improvement Plan (CIP) Updates (7-year plan)

4

Preparation of the Annual Enrollment Plan

5

Review and Approval of Capped Schools due to Overcrowding Concerns

6

Review of Options to Address Other School Utilization Concerns

1

Presentation of the Annual Membership Forecast (1-year and 10-year projections)

2

Review of Projected Crowding for the Next School Year

3

Review of Capital Improvement Plan (CIP) Updates (7-year plan)

4

Preparation of the Annual Enrollment Plan

5

Review and Approval of Capped Schools due to Overcrowding Concerns

6

Review of Options to Address Other School Utilization Concerns

Preparation of the Annual Enrollment Plan

Current Step

1

Public Engagement

2

Board Review of Annual Goals

3

Plan Development & Presentation

Preparation of the Annual Enrollment Plan

1. **Public engagement** to capture thoughts and ideas to support the development of the next enrollment plan
2. **Review of goals** for the next enrollment plan with the Board
3. **Development and presentation** of the initial draft of the enrollment plan to the Board
 - a. Review of public feedback with the Board and presentation of recommended revisions to the initial draft
 - b. Presentation of the final draft of the enrollment plan to the Board for review and approval

Participation Numbers

Pre-Release Public Engagement Activities

Spring 2025 (as of 8.25.25)

Updated

Digital Assets:

- 5,007 page views (+236)

Live Sessions:

- 61 participants (In-person)
- 15 participants (Virtual)
 - 166 views (+74)

Online Forums:

- 1,849 participants (+894)
- 1,475 thoughts (+738)

AI-Supported Interviews:

- 111 participants

Insights on What Families Value in Schools

General Assignment Planning ThoughtExchange open through July 31

Core Question:

As you think about school assignments, what do you value most about your student's current school or what would you hope for in a school assignment?

Insights on What Families Value in Schools: Key Thoughts

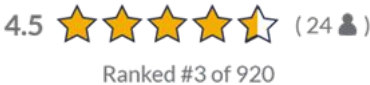
Distance We need a school that is close to our home.



The school community. School is a home away from home and I want it to be a place my child likes to go and feels welcome and comfortable.



Our neighborhood has kept the same school assignment Consistency for students and families



1,080
Participants



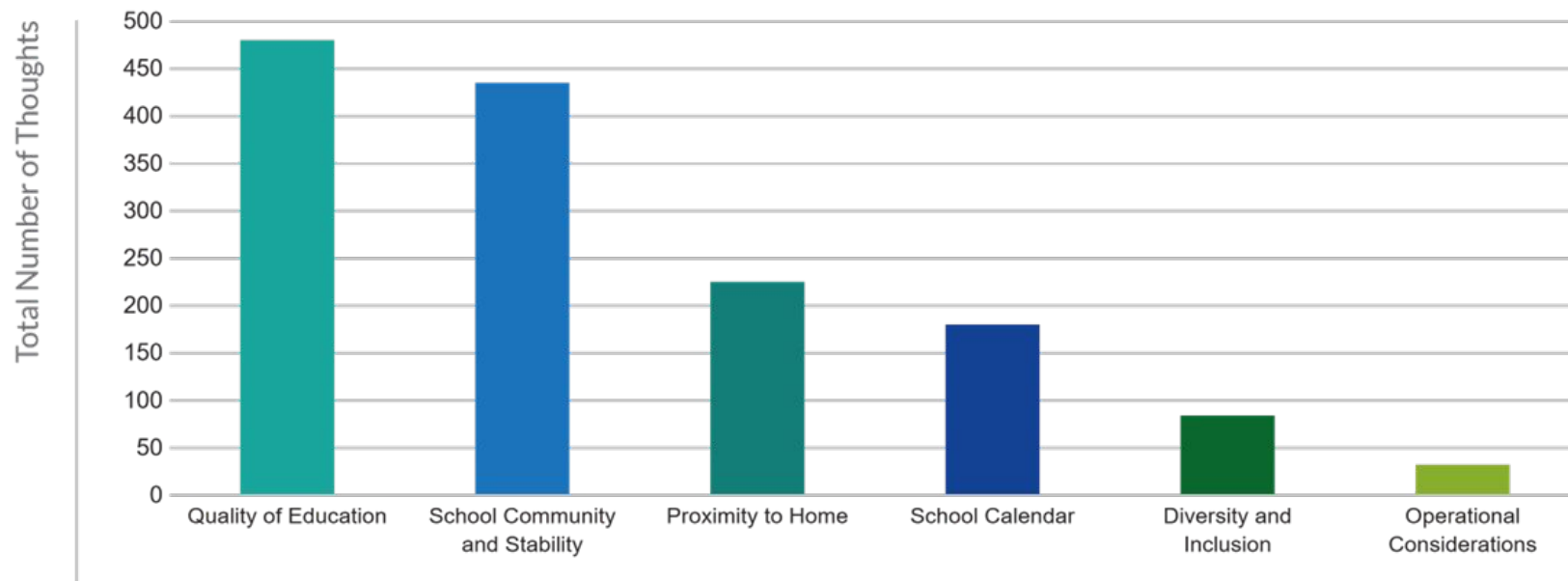
920
Thoughts



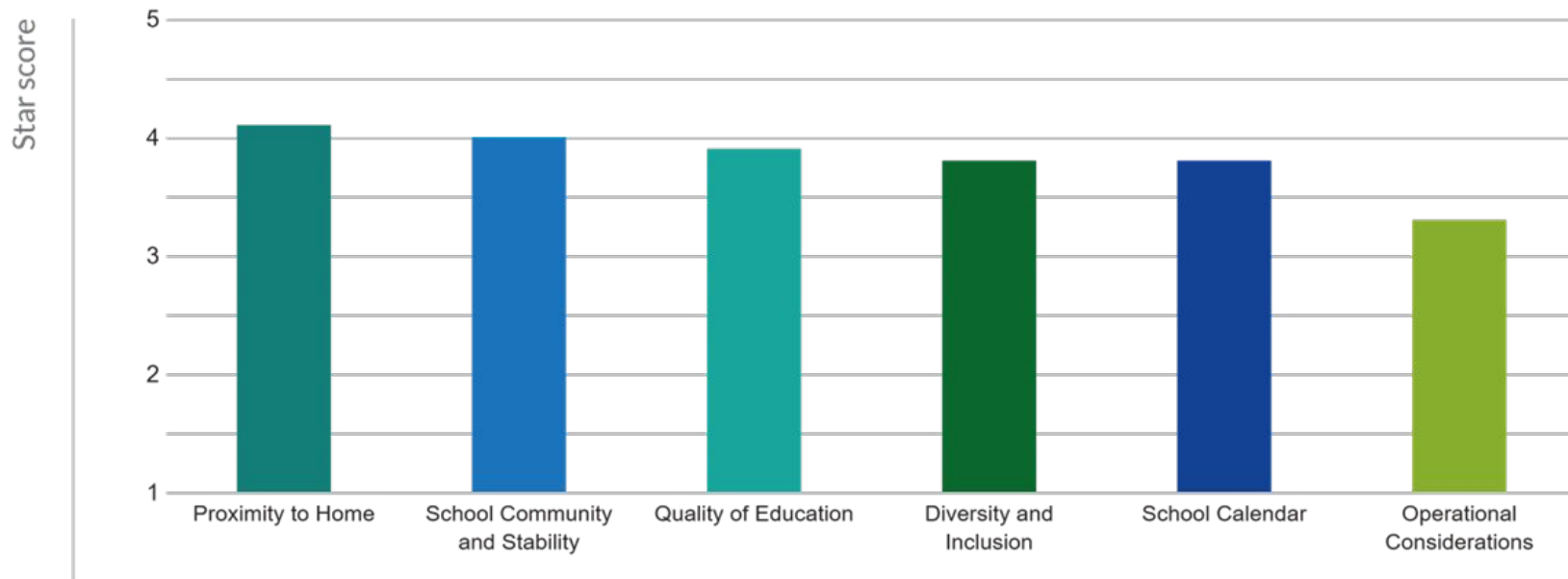
18,288
Ratings



Insights on What Families Value in Schools: Total Thoughts



Insights on What Families Value in Schools: Star Score



Planning Implications

Stability: review and prepare recommendations that allow for increased stability for families, including stability rules for transfers

Calendar Continuity: evaluate feasibility of aligning K-8 calendars

Cohort Continuity: evaluate feasibility of adjusting feeder patterns to improve cohort continuity

Capacity Management: review feasibility of various methods used to increase capacity, acknowledging unique/ regional concerns

Policy Guidance: acknowledge that **proximity** and **stability** are highlighted by families as being important, while balancing the need for the district to maintain **student achievement** and **operational efficiency** goals

Preparation of the Annual Enrollment Plan

1. **Public engagement** to capture thoughts and ideas to support the development of the next enrollment plan
2. **Review of goals** for the next enrollment plan with the Board
3. **Development and presentation** of the initial draft of the enrollment plan to the Board
 - a. Review of public feedback with the Board and presentation of recommended revisions to the initial draft
 - b. Presentation of the final draft of the enrollment plan to the Board for review and approval

Key Elements Under Consideration

New Elementary School

- develop a base attendance area for a new elementary school
 - align middle and high school feeder patterns
 - address any domino impacts on nearby schools and assignment areas

Completed Renovation Projects

- determine if additional capacity at renovated elementary schools can relieve crowding at nearby schools

Key Elements Under Consideration *(continued)*

Crowding and Transportation

- address ongoing crowding at schools in high growth areas with no new capacity coming in the immediate area
- evaluate assignment areas with inefficient transportation routes

Stability: Carry Over Items from the 2025-26 Plan

- address concerns about some feeder assignments that separate students from their peers as they move to the next school level

Preparation of the Annual Enrollment Plan

Current Step

1. **Public engagement** to capture thoughts and ideas to support the development of the next enrollment plan
2. **Review of goals** for the next enrollment plan with the Board
3. **Development and presentation** of the initial draft of the enrollment plan to the Board
 - a. Review of public feedback with the Board and presentation of recommended revisions to the initial draft
 - b. Presentation of the final draft of the enrollment plan to the Board for review and approval

1

Presentation of the Annual Membership Forecast (1-year and 10-year projections)

2

Review of Projected Crowding for the Next School Year

3

Review of Capital Improvement Plan (CIP) Updates (7-year plan)

4

Preparation of the Annual Enrollment Plan

5

Review and Approval of Capped Schools due to Overcrowding Concerns

6

Review of Options to Address Other School Utilization Concerns

Review and Approval of Capped Schools due to Overcrowding Concerns

Review

Capped Elementary Schools*	
Abbotts Creek	Oakview
Alston Ridge (MTYR)	Olive Chapel (MTYR)
Apex Friendship	Parkside (MTYR)
Beaverdam	River Bend
Cedar Fork	Rogers Lane
Holly Grove (MTYR)	Scotts Ridge
Holly Ridge	Weatherstone
Hortons Creek	White Oak
Northwoods	

Capped Middle Schools*

Apex Friendship

Mills Park (FP)

Capped High Schools*

Apex Friendship (FP)

Heritage

Panther Creek

**as of February 7, 2025
(MTYR) = Multi-track Year-round
(FP) = Feeder Pattern Cap*

Review of Options to Address Other School Utilization Concerns

Review

1

Presentation of the Annual Membership Forecast (1-year and 10-year projections)

2

Review of Projected Crowding for the Next School Year

3

Review of Capital Improvement Plan (CIP) Updates (7-year plan)

4

Preparation of the Annual Enrollment Plan

5

Review and Approval of Capped Schools due to Overcrowding Concerns

6

Review of Options to Address Other School Utilization Concerns

Board Approved Calendar Conversion for 2026-27

Lake Myra Elementary - Multi-track Year-Round

- Transition from a year-round track 4 only school to a multi-track year-round school
- Increase capacity from 616 to 814

Information & Updates

www.wcpss.net/assignmentplanning

Review

Initial Staff Recommendations for the 2026-2027 School Enrollment Plan



Overview

Information & Updates

www.wcpss.net/2026enrollmentproposal

www.wcpss.net/assignmentplanning

Base School Impacts: *Elementary School*

Sending Schools:

Ballentine

Banks Road

Middle Creek

Salem

Vance

West Lake

White Oak

Zebulon Magnet

Receiving Schools:

Banks Road

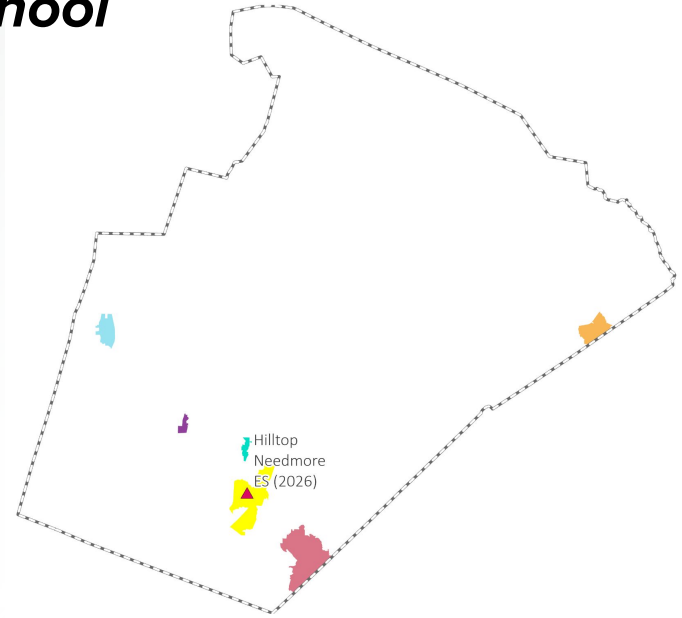
Carver

NEW Hilltop Needmore

Oak Grove

Turner Creek

West Lake



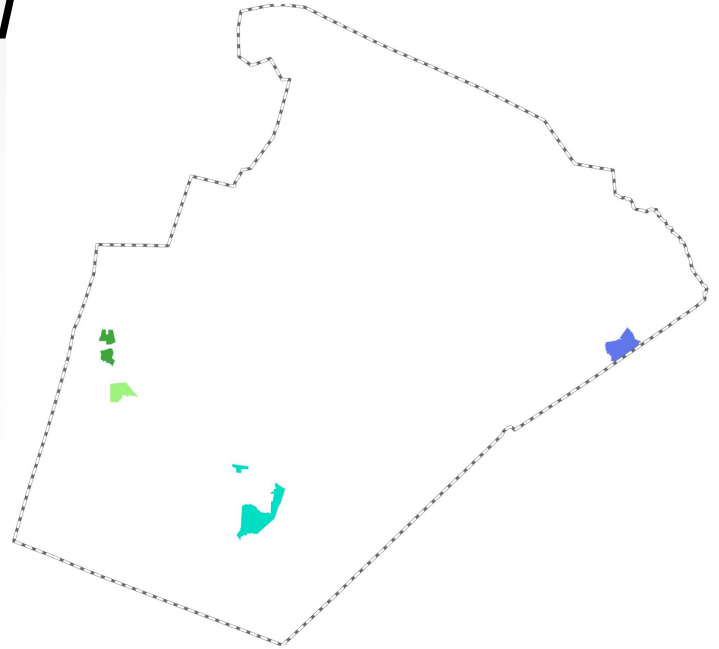
Base School Impacts: *Middle School*

Sending Schools:

Dillard Drive Magnet
Herbert Akins Road
Lufkin Road
Mills Park
Salem
Zebulon Magnet

Receiving Schools:

Apex
Salem
Wendell Magnet
West Lake



Base School Impacts: *High School*

Sending Schools:

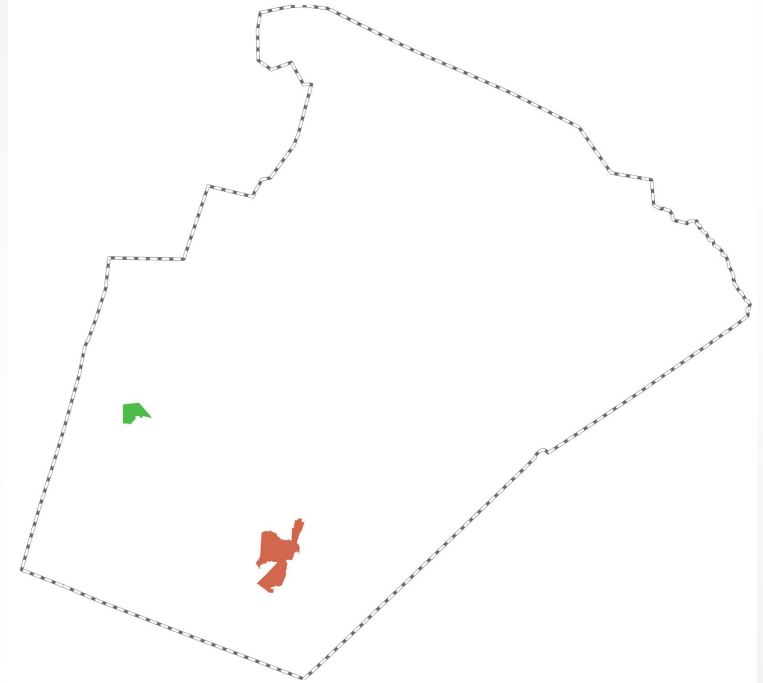
Apex Friendship

Willow Spring

Receiving Schools:

Apex

Middle Creek



Recommended Stability Rules for 2026-27

Opening a New Elementary School (2026-2027)

For students proposed to be assigned from an existing elementary school to the **NEW Hilltop Needmore ES**:

- Current students **rising into 4th or 5th grade** are eligible to remain at their current school with transfer status (no transportation) through the end of 5th grade
 - Rising kindergarten, 1st, 2nd or 3rd grade **siblings** of these students are eligible to join their older sibling with transfer status (no transportation) through the end of 5th grade

NOTE: These requests must be submitted during the designated Stability Transfer Window

Other Elementary Assignment Changes (2026-2027)

For students proposed to be assigned from an **existing elementary school to an existing elementary school**

- Current students **rising into 1st through 5th grade** are eligible to remain assigned to their current school with transfer status (no transportation) through the end of 5th grade
 - Rising **kindergarten siblings** of these students are eligible to join their older siblings with transfer status (no transportation) through the end of 5th grade

NOTE: These requests must be submitted during the designated Stability Transfer Window

Other Middle School Assignment Changes (2026-2027)

For students proposed to be assigned from an **existing middle school to an existing school**

- Current students **rising into 7th or 8th grade** are eligible to remain assigned to their current school with transfer status (no transportation) through the end of 8th grade
 - Rising **6th grade siblings** of these students are eligible to join their older siblings with transfer status (no transportation) through the end of 8th grade

NOTE: These requests must be submitted during the designated Stability Transfer Window

Other High School Assignment Changes (2026-2027)

For students proposed to be assigned from an **existing high school to an existing high school**

- Current students **rising into 10th through 12th grade** are eligible to remain assigned to their current school with transfer status (no transportation) through the end of 12th grade
 - Rising **9th grade siblings** of these students are eligible to join their older siblings with transfer status (no transportation) through the end of 12th grade

NOTE: These requests must be submitted during the designated Stability Transfer Window

Recommendations Related to New School Opening

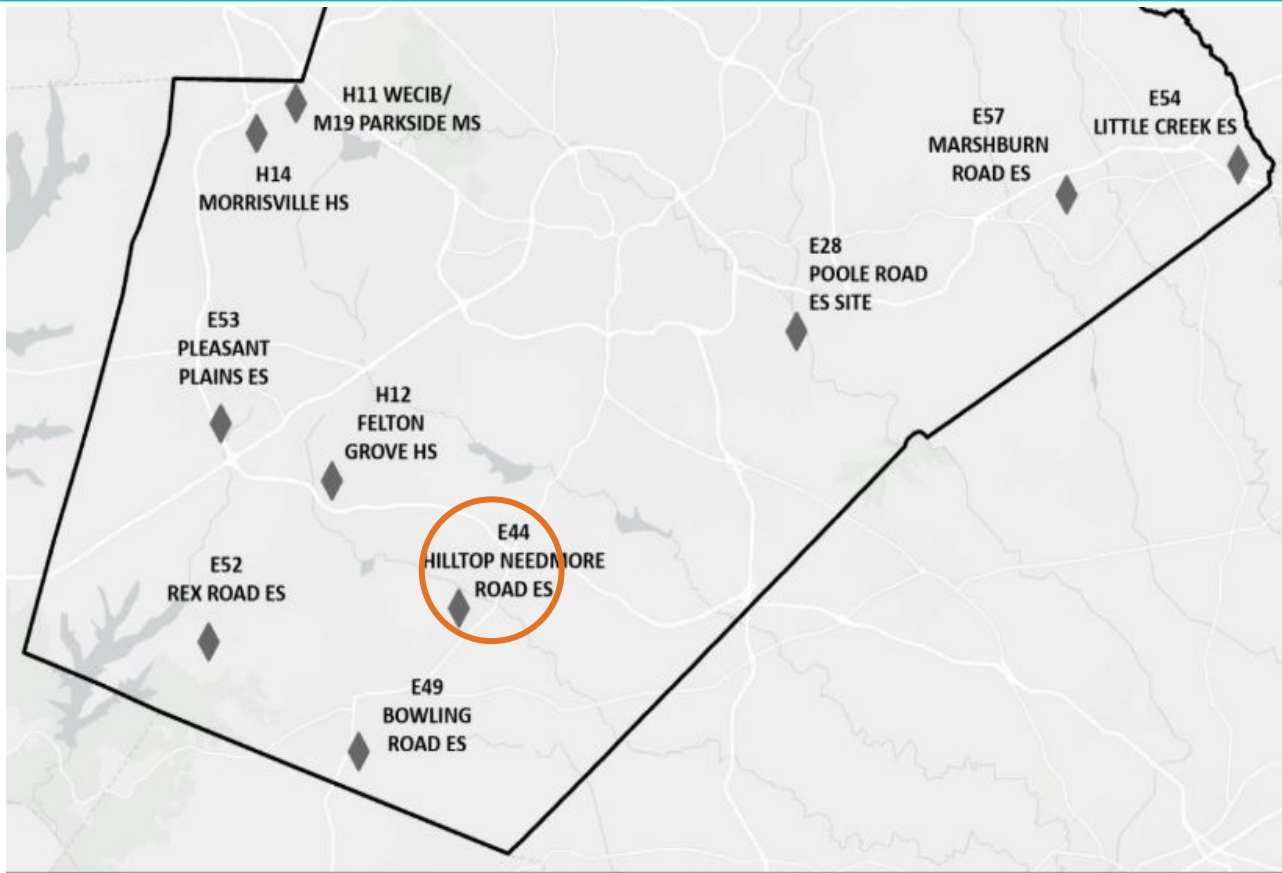
The image shows the exterior of Hilltop Needmore Elementary school. The building features a modern design with dark grey vertical metal siding and large windows with blue frames. A yellow vertical panel is visible near the entrance. The text "Hilltop Needmore Elementary" is overlaid in white.

Hilltop Needmore Elementary



WAKE COUNTY
PUBLIC SCHOOL SYSTEM

Office of Student Assignment 40



New School - Hilltop Needmore ES (opening July 2026)

Calendar Recommendation

- Multi-track Year-round, Operating Track 4 Only, Capacity = 716 (max. 924)

Impacted Schools

- Ballentine ES, Banks Road ES & West Lake ES

2025-26 Base School	Calendar	Capacity w/ Trailers	2026-27 Projected Utilization w/ Trailers	2027-28 Projected Utilization w/ Trailers
Ballentine ES	Multi-track Year-round	696	102%	103%
Banks Road ES	Track 4 Only	616	126%	132%
West Lake ES	Track 4 Only	748	76%	78%

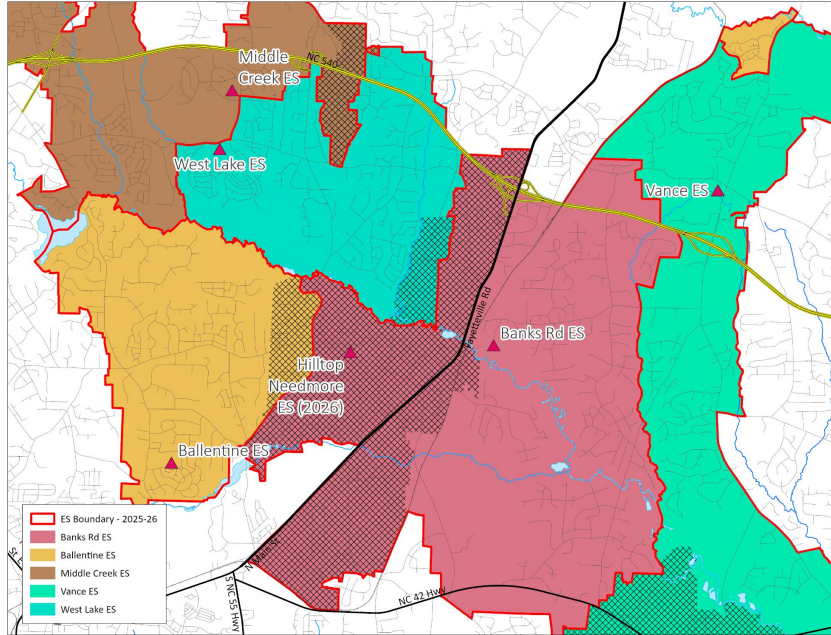
New School - Hilltop Needmore ES (opening July 2026)

Other Impacted Schools

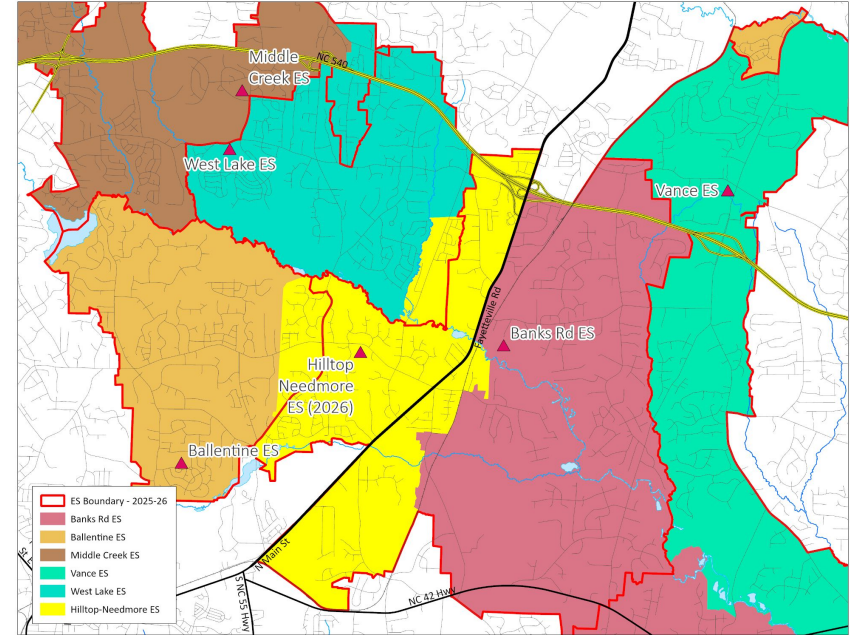
- Middle Creek ES, Oak Grove ES, & Vance ES

2025-26 Base School	Calendar	Capacity w/ Trailers	2026-27 Projected Utilization w/ Trailers	2027-28 Projected Utilization w/ Trailers
Middle Creek ES	Track 4 Only	670	114%	122%
Oak Grove ES	Multi-track Year-round	716	79%	79%
Vance ES	Track 4 Only	408	110%	113%

New School - Hilltop Needmore ES

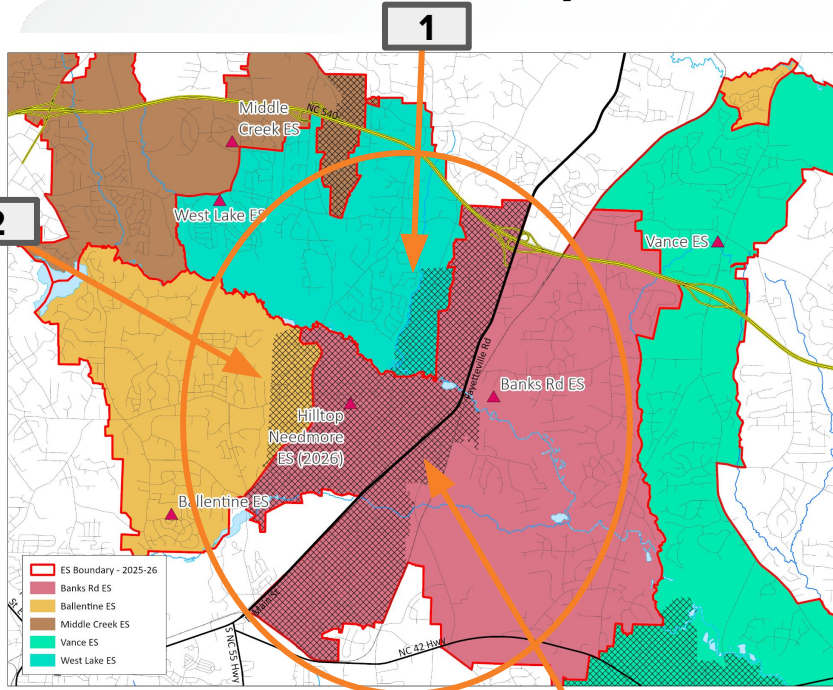


Impacted Areas:



Proposed Base Areas

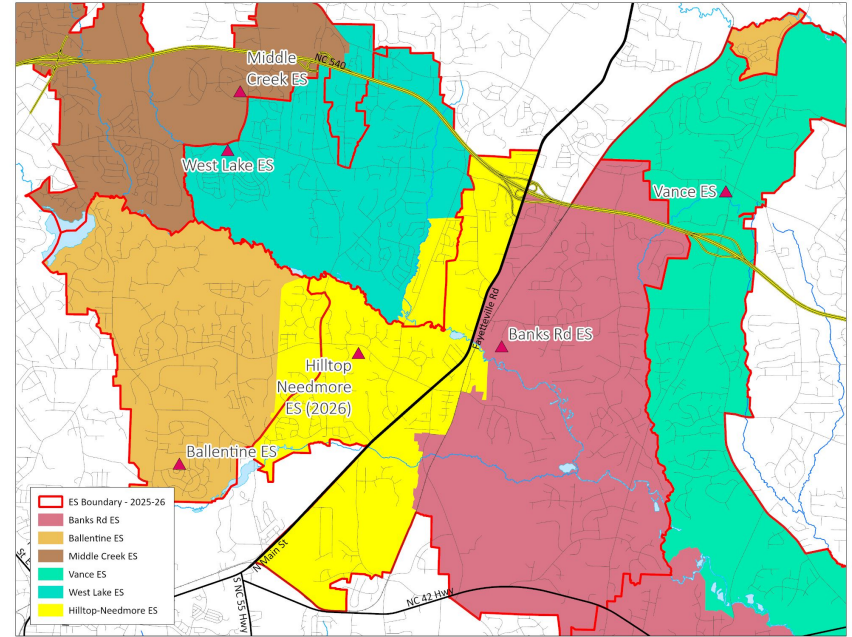
New School - Hilltop Needmore ES



Impacted Areas:



3



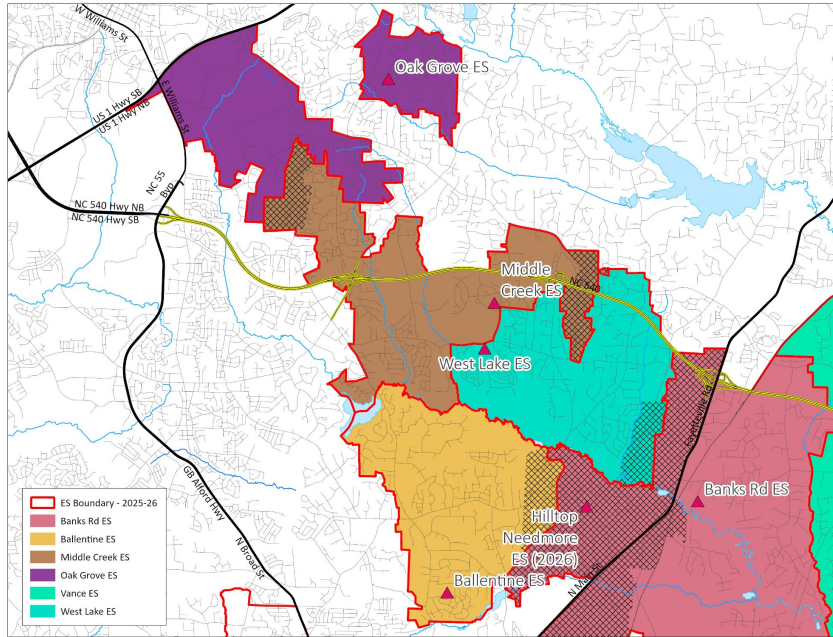
Proposed Base Areas



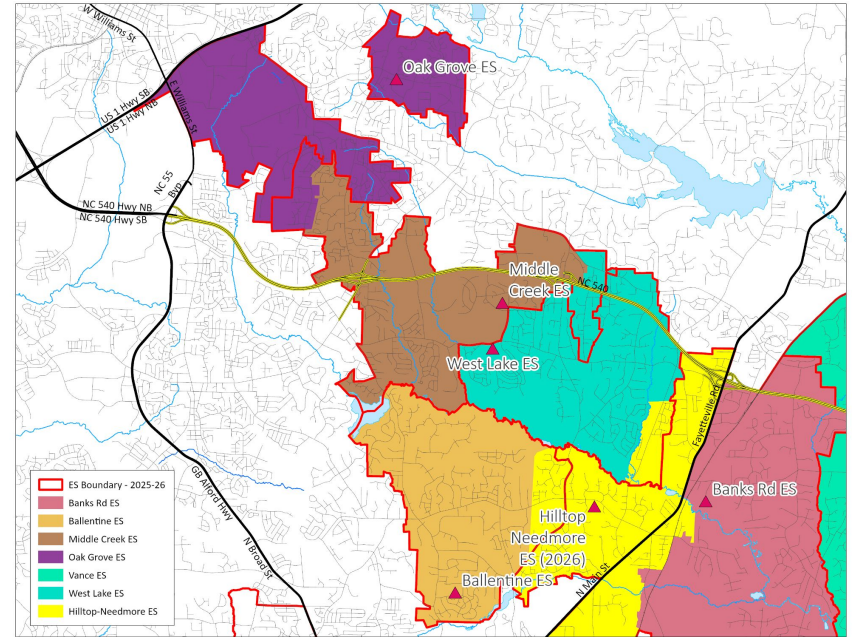
WAKE COUNTY
PUBLIC SCHOOL SYSTEM

Office of Student Assignment 45

Existing Schools - Oak Grove ES & West Lake ES (from Middle Creek ES)

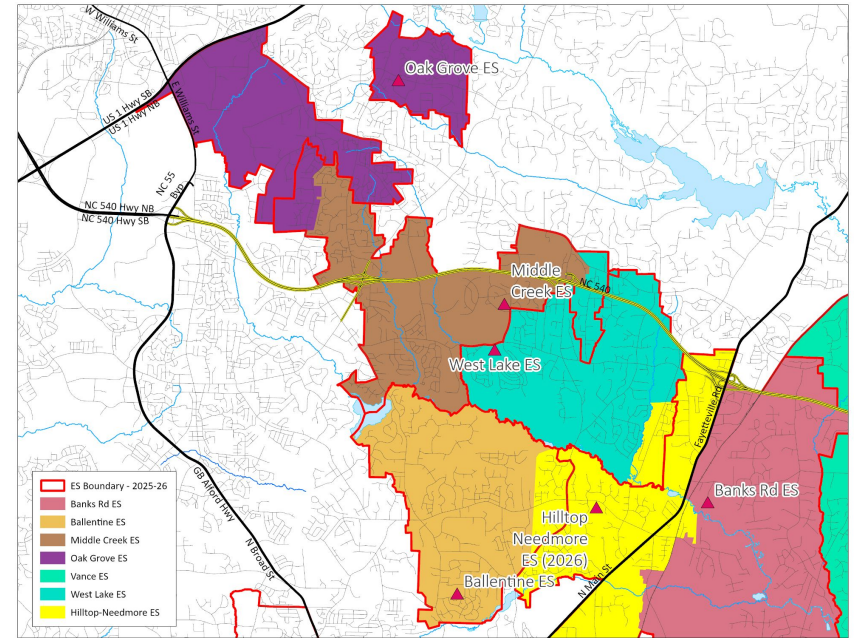
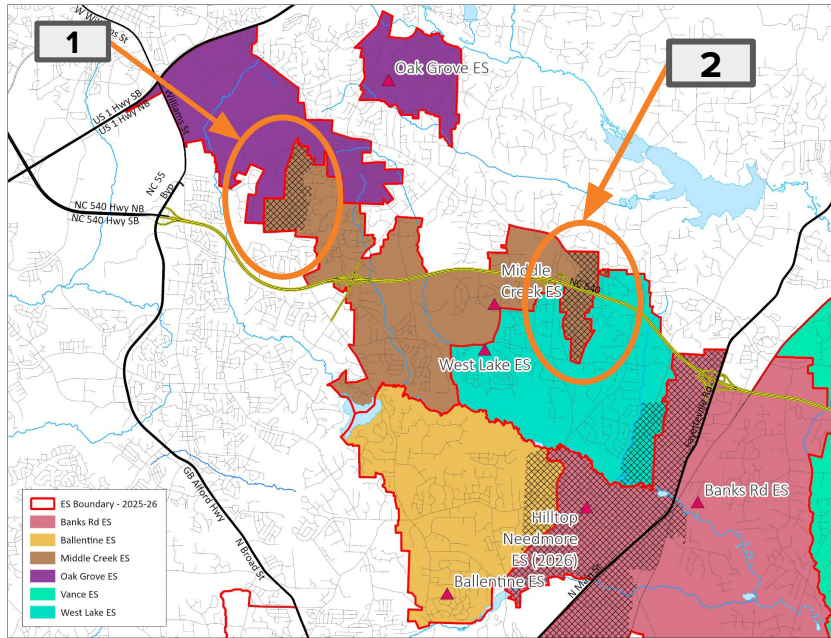


Impacted Areas:



Proposed Base Areas

Existing Schools - Oak Grove ES & West Lake ES (from Middle Creek ES)

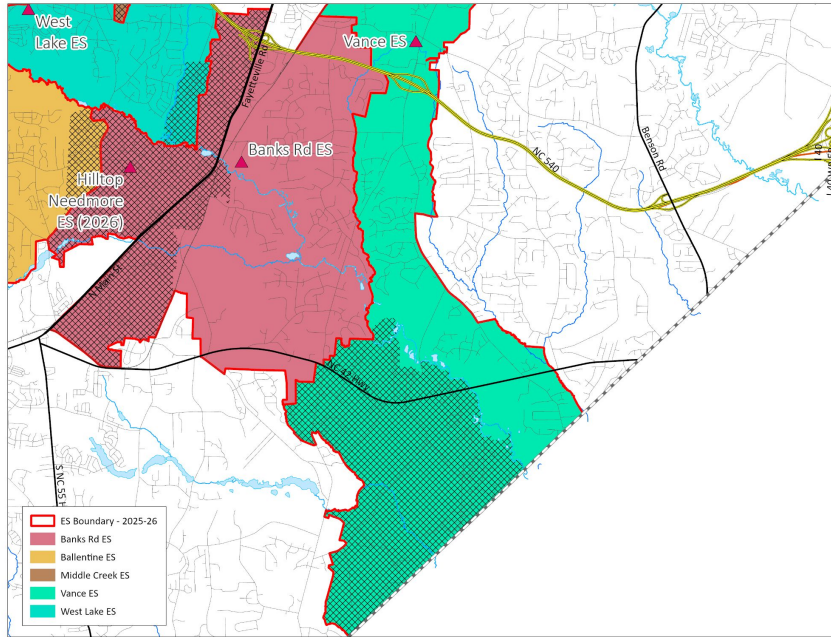


Impacted Areas:

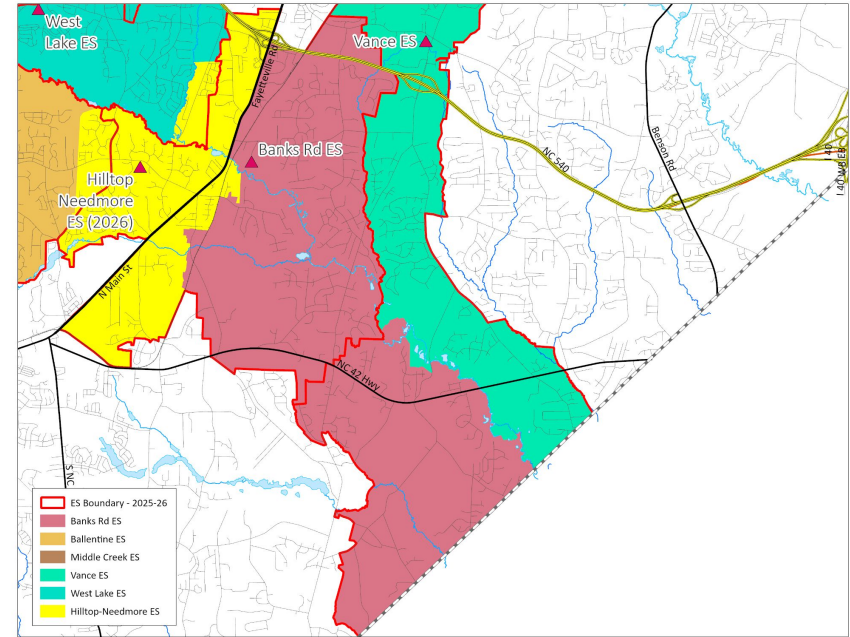


Proposed Base Areas

Existing Schools - Banks Road ES (from Vance ES)

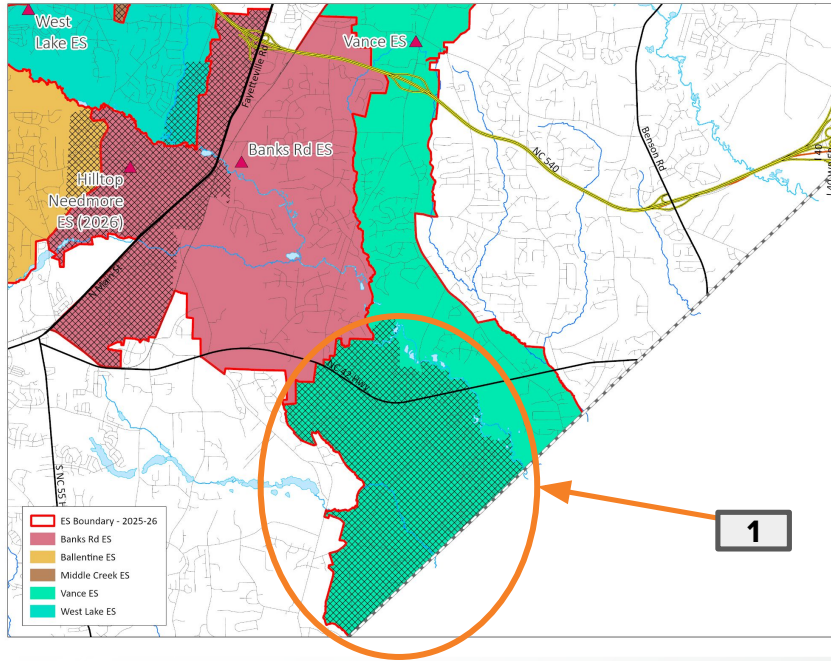


Impacted Areas:

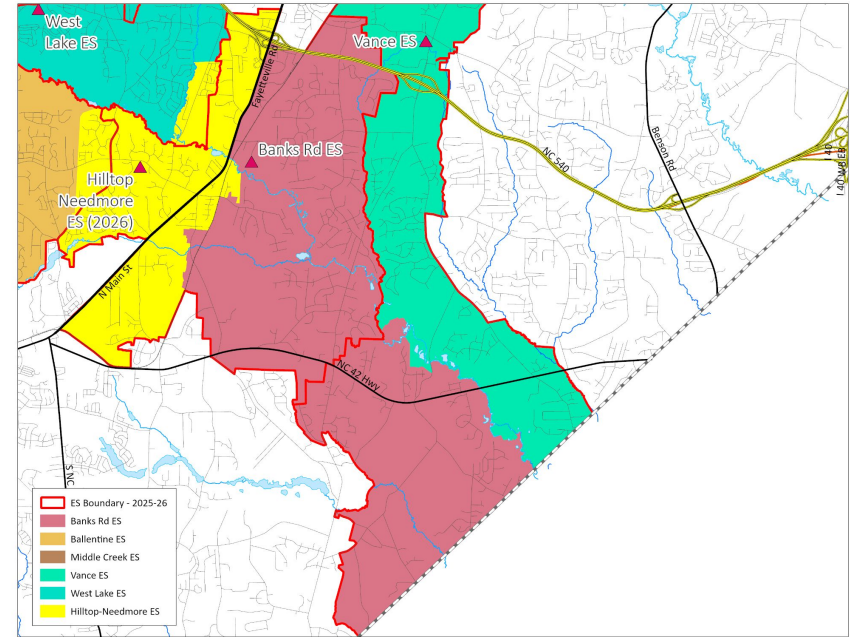


Proposed Base Areas

Existing Schools - Banks Road ES (from Vance ES)



Impacted Areas:

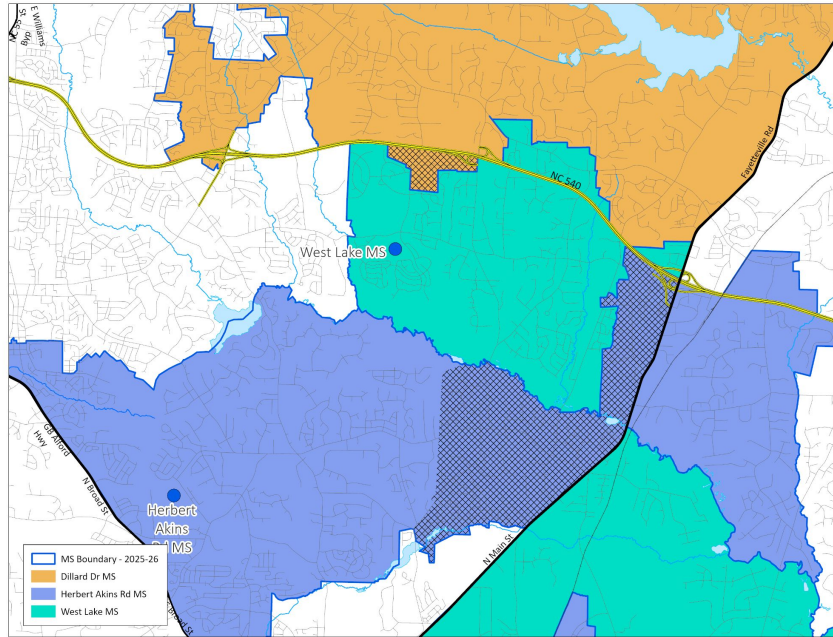


Proposed Base Areas

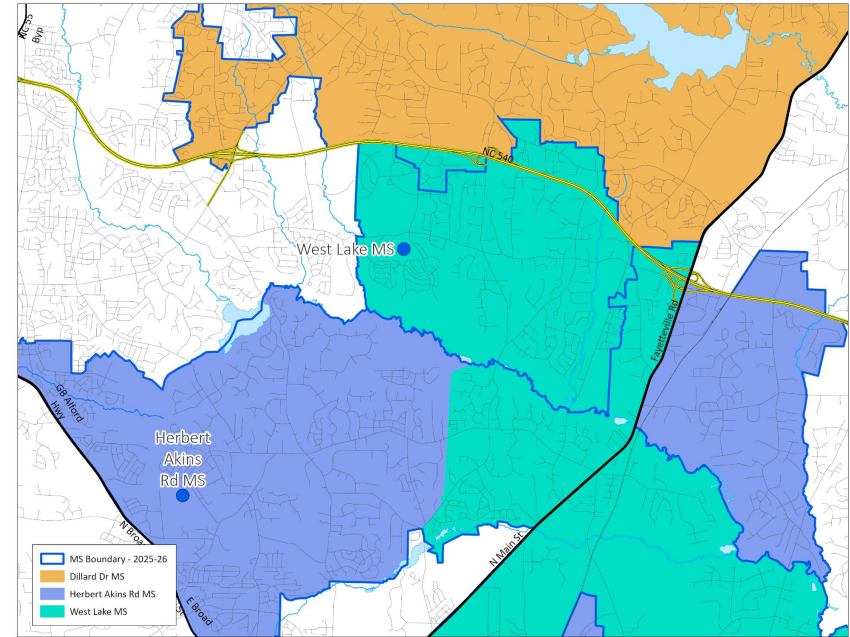
New School - Hilltop Needmore ES & Existing Schools

2026-27 Base School	Calendar	Capacity w/ Trailers	2026-27 Projected Utilization w/ Trailers	2027-28 Projected Utilization w/ Trailers
Ballentine ES	Multi-track Year-round	696	95%	95%
Banks Road ES	Track 4 Only	616	87%***	92%***
Middle Creek ES	Track 4 Only	670	93%	101%
Oak Grove ES	Multi-track Year-round	716	93%	93%
Vance ES	Track 4 Only	408	75%	76%
West Lake ES	Track 4 Only	748	77%***	79%***
Hilltop Needmore ES	Track 4 Only	716 (max. 924)	69%	71%

Existing Schools - West Lake MS (from Dillard Drive MS & Herbert Akins Road MS)

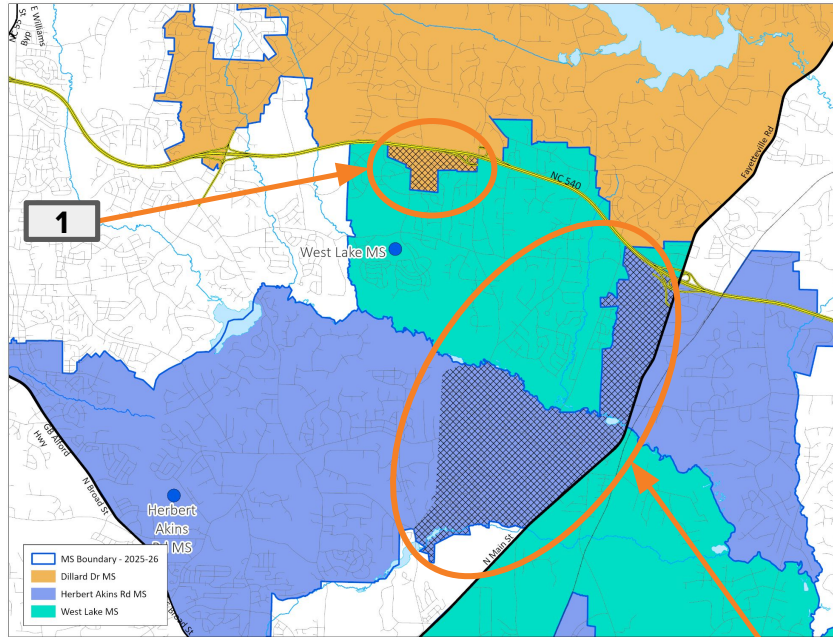


Impacted Areas:



Proposed Base Areas

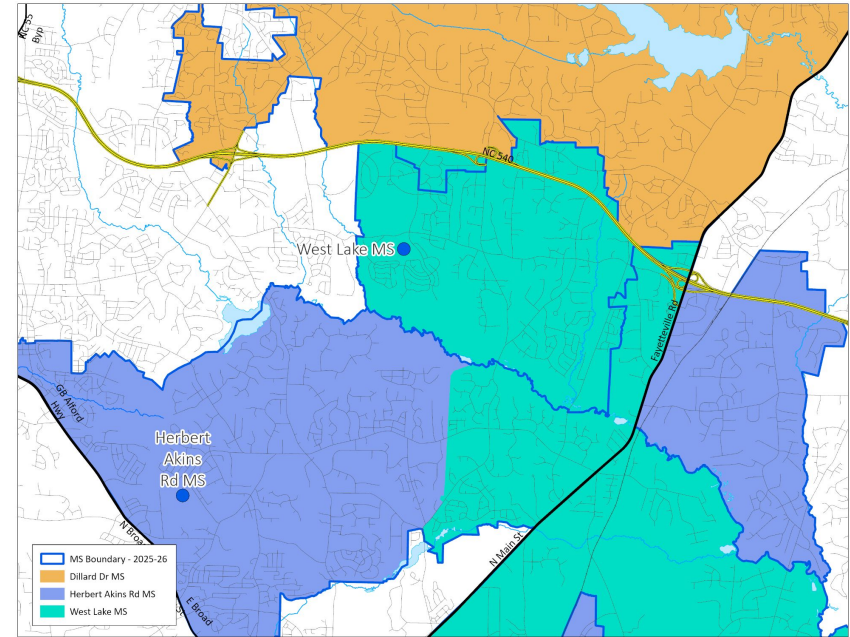
Existing Schools - West Lake MS (from Dillard Drive MS & Herbert Akins Road MS)



Impacted Areas:



2



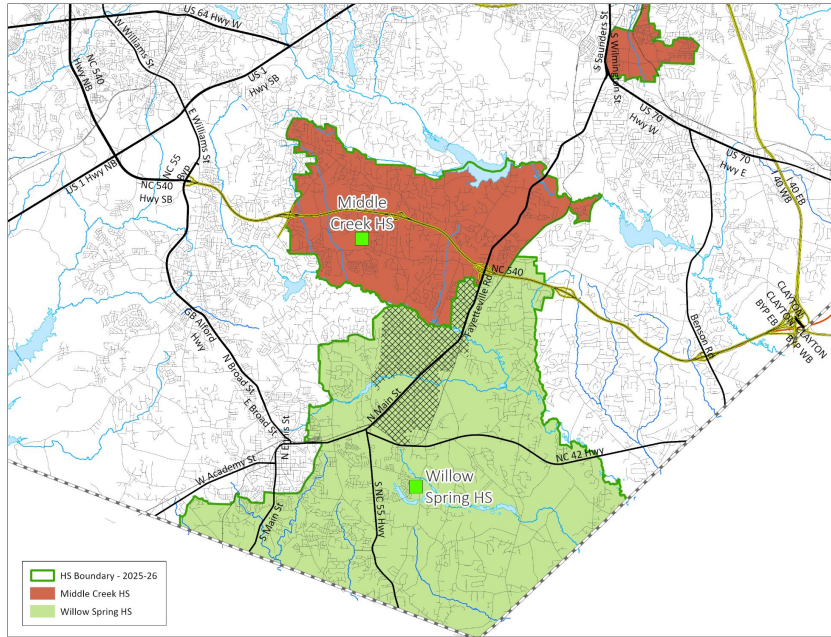
Proposed Base Areas

Existing Schools - West Lake MS (from Dillard Drive Magnet MS & Herbert Akins Road MS)

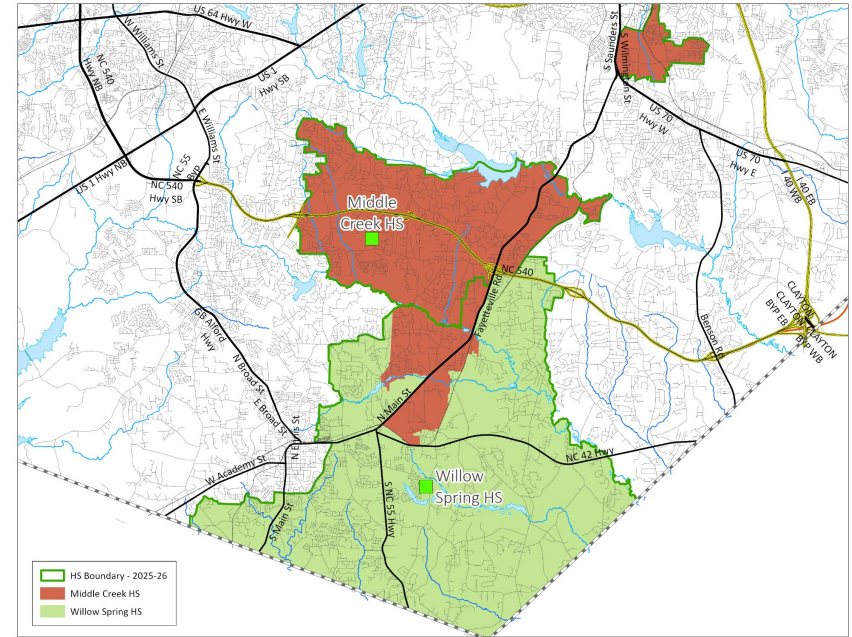
2025-26 Base School	Calendar	Capacity w/ Trailers	2026-27 Projected Utilization w/ Trailers	2027-28 Projected Utilization w/ Trailers
Dillard Drive Magnet MS	Traditional	1092	96%	99%
Herbert Akins Road MS	Multi-track Year-round	1248	105%	112%
West Lake MS	Track 4 Only	1196	61%	63%

2026-27 Base School	Calendar	Capacity w/ Trailers	2026-27 Projected Utilization w/ Trailers	2027-28 Projected Utilization w/ Trailers
Dillard Drive Magnet MS	Traditional	1092	95%	98%
Herbert Akins MS	Multi-track Year-round	1248	93%	99%
West Lake MS	Track 4 Only	1196	74%	76%

Existing Schools - Middle Creek HS (from Willow Spring HS)



Impacted Areas:



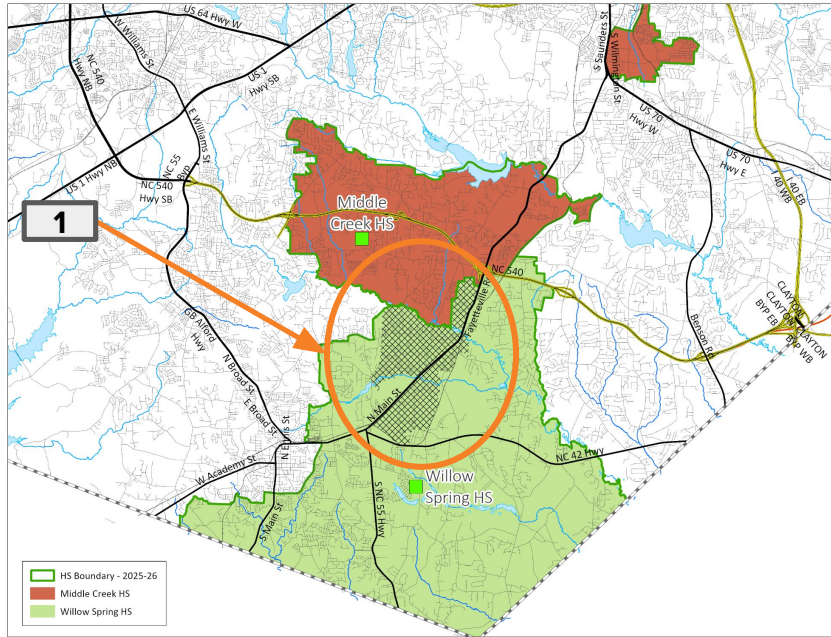
Proposed Base Areas



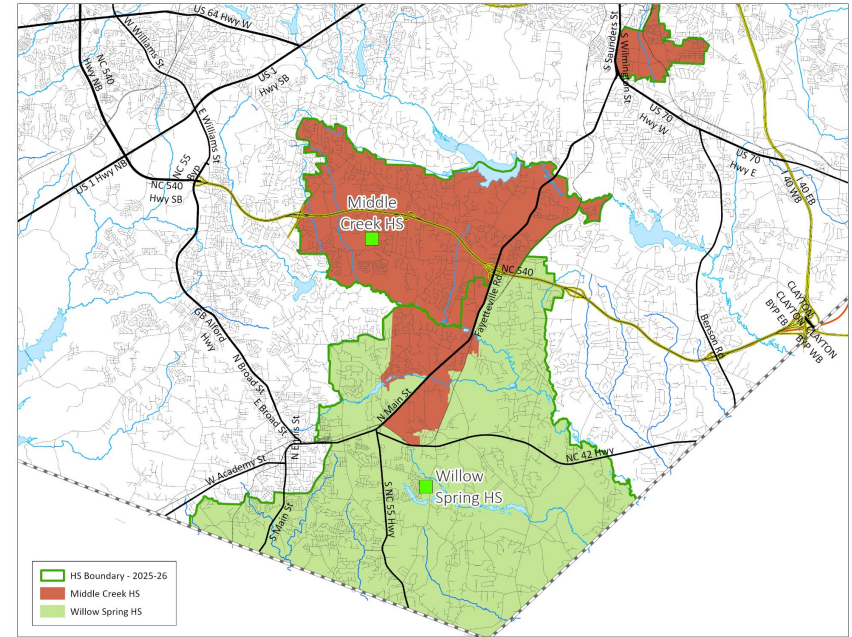
WAKE COUNTY
PUBLIC SCHOOL SYSTEM

Office of Student Assignment 54

Existing Schools - Middle Creek HS (from Willow Spring HS)



Impacted Areas:



Proposed Base Areas

Existing Schools - Middle Creek HS (from Willow Spring HS)

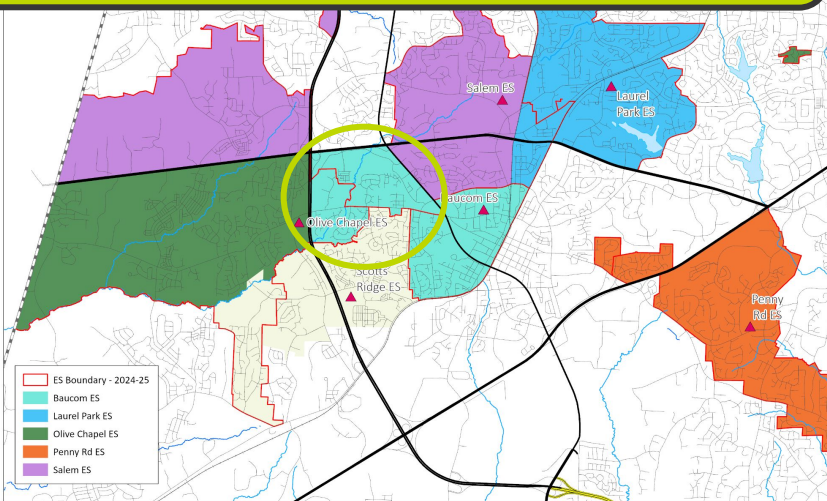
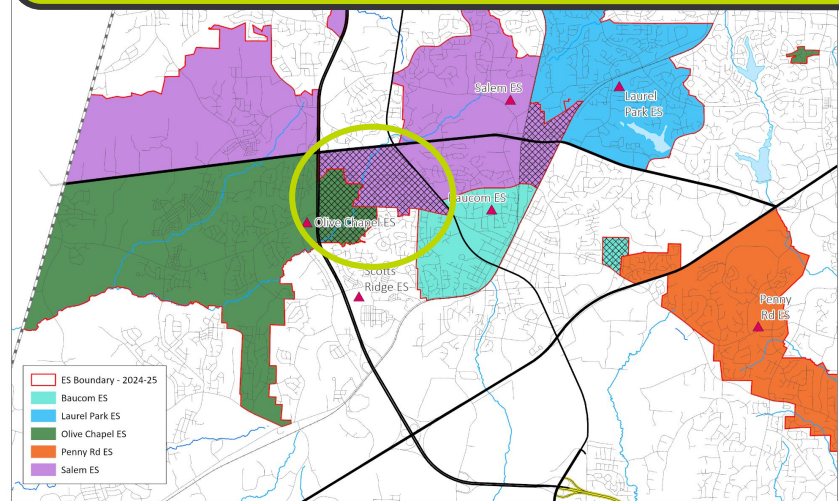
2025-26 Base School	Calendar	Capacity w/ Trailers	2026-27 Projected Utilization w/ Trailers	2027-28 Projected Utilization w/ Trailers
Middle Creek HS	Traditional	2232	67%	67%
Willow Spring HS	Traditional	2240	113%	116%

2026-27 Base School	Calendar	Capacity w/ Trailers	2026-27 Projected Utilization w/ Trailers	2027-28 Projected Utilization w/ Trailers
Middle Creek HS	Traditional	2232	79%	79%
Willow Spring HS	Traditional	2240	101%	104%

Recommendations for Feeder Pattern Alignment

Renovated School - Baucom ES (from Olive Chapel ES & Salem ES) &

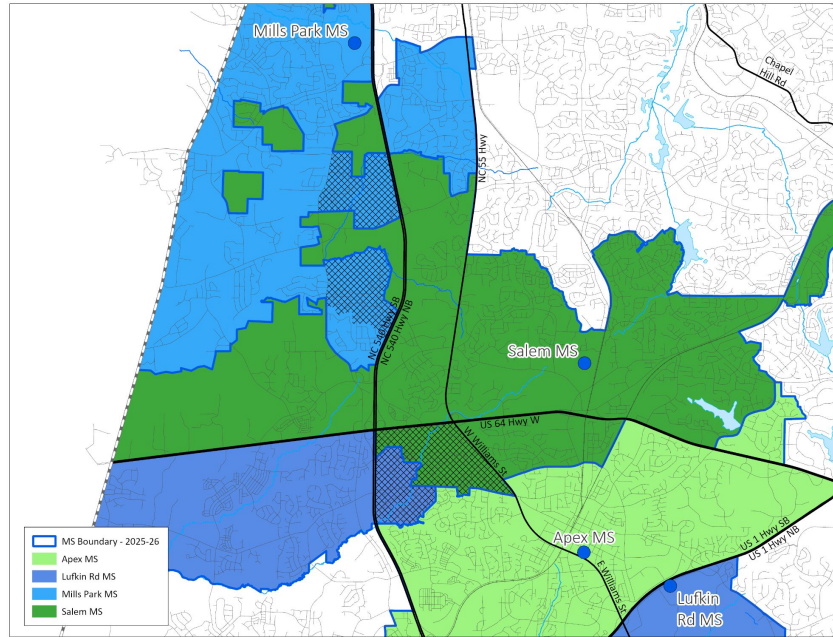
Previously Approved for 2025-2026



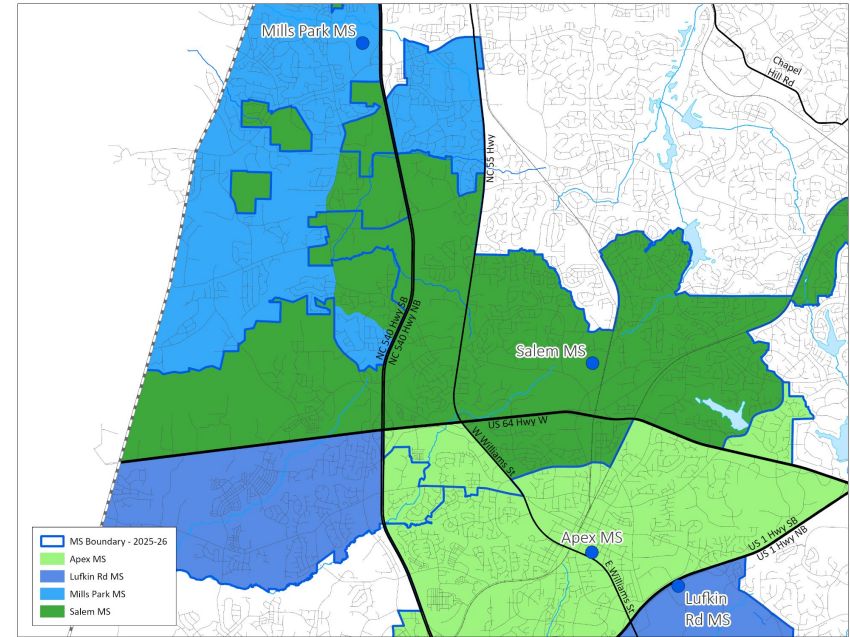
Impacted Areas: 

Proposed Base Areas

Existing Schools - Apex MS (from Lufkin Road MS & Salem MS)

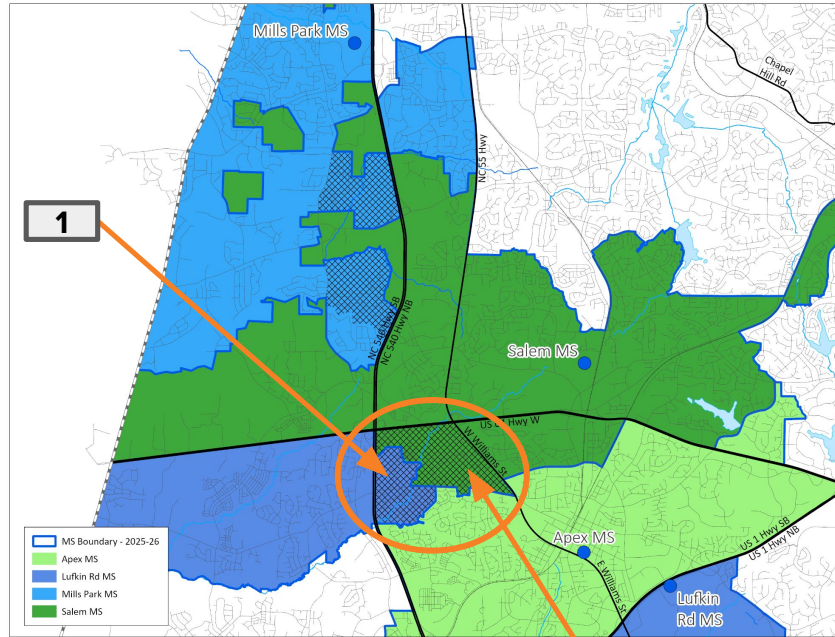


Impacted Areas:

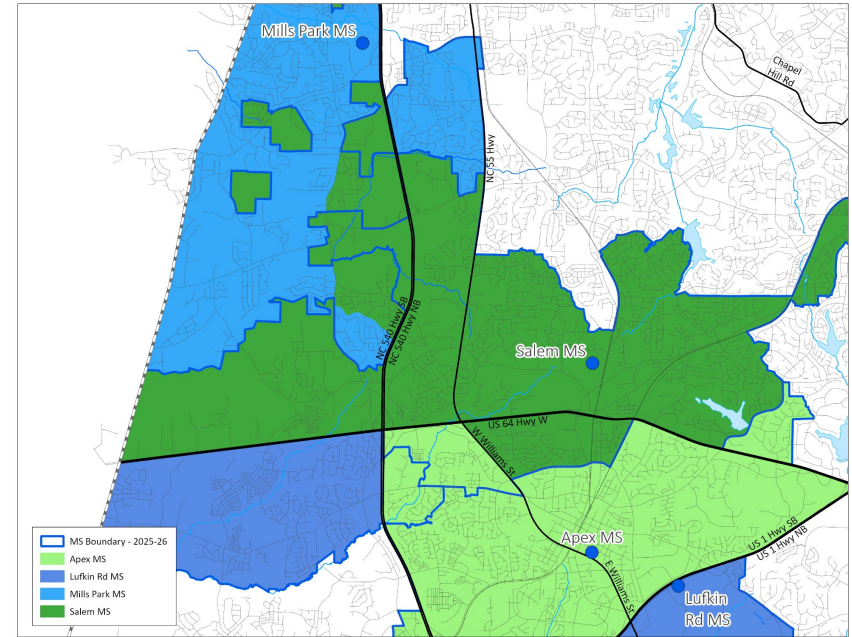


Proposed Base Areas

Existing Schools - Apex MS (from Lufkin Road MS & Salem MS)



Impacted Areas:



Proposed Base Areas

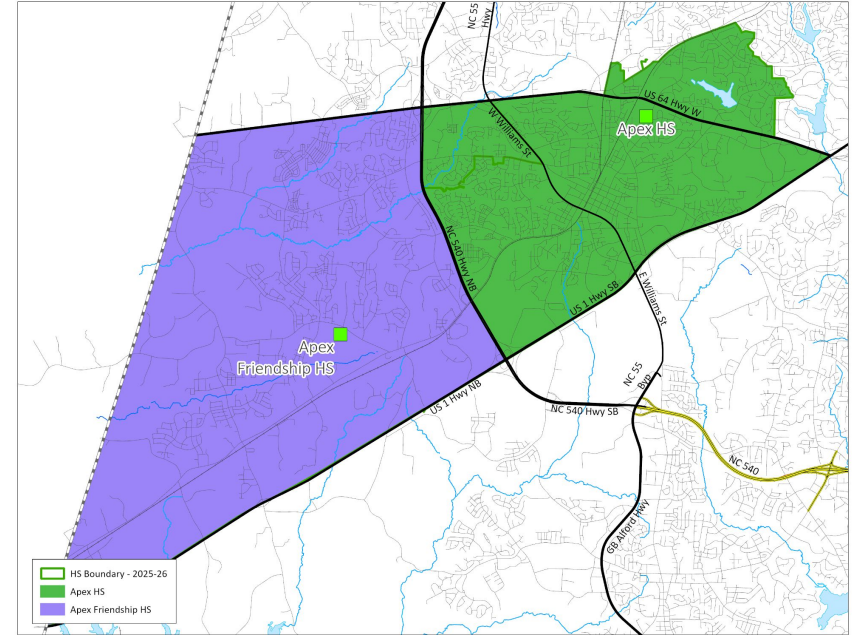
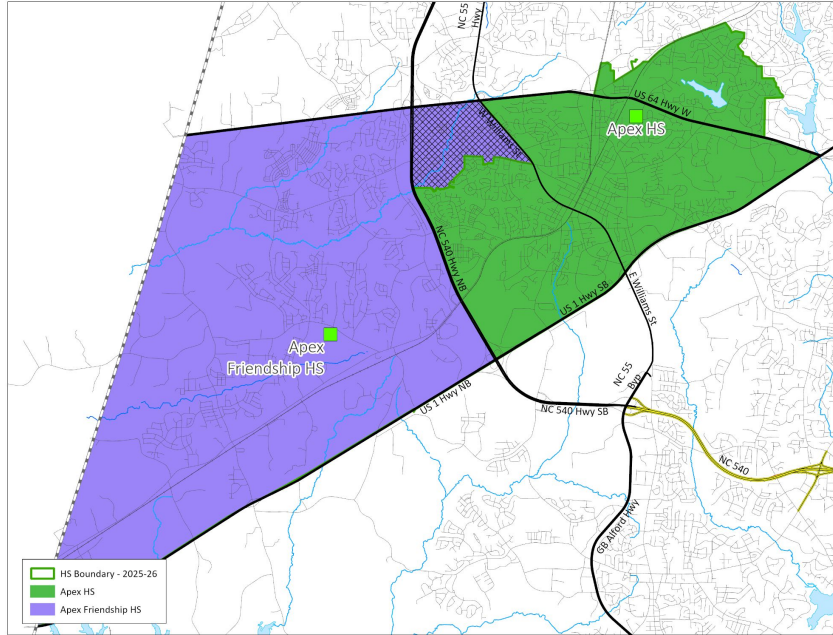
Existing Schools - Apex MS (from Lufkin Road & Salem MS)

2025-26 Base School	Calendar	Capacity w/ Trailers	2026-27 Projected Utilization w/ Trailers	2027-28 Projected Utilization w/ Trailers
Apex MS	Traditional	936	94%	97%
Lufkin Road MS	Multi-track Year-round	1248	101%	110%
Salem MS	Multi-track Year-round	1300	85%	87%

2026-27 Base School	Calendar	Capacity w/ Trailers	2026-27 Projected Utilization w/ Trailers	2027-28 Projected Utilization w/ Trailers
Apex MS	Traditional	936	103%	105%
Lufkin Road MS	Multi-track Year-round	1248	100%	108%
Salem MS	Multi-track Year-round	1300	86%***	89%***



Existing Schools - Apex HS (from Apex Friendship HS)

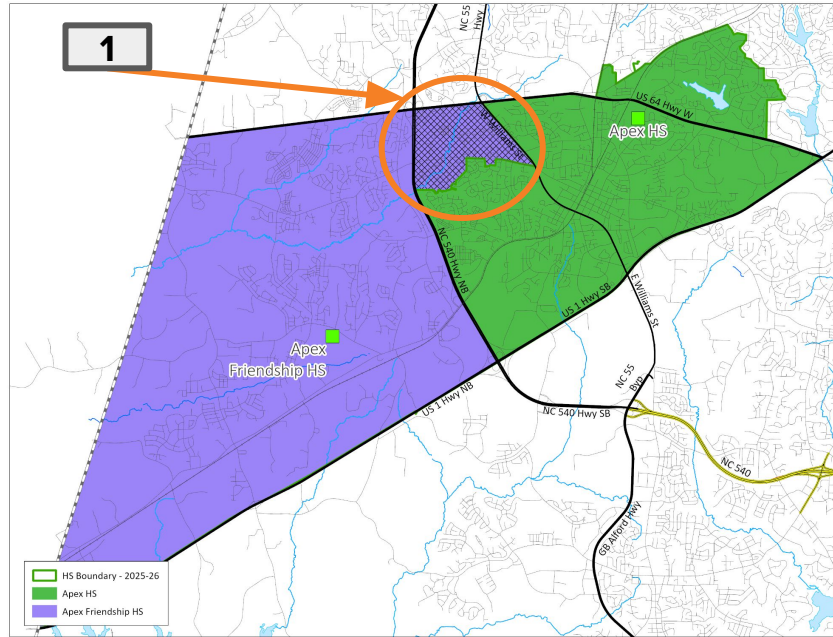


Impacted Areas:

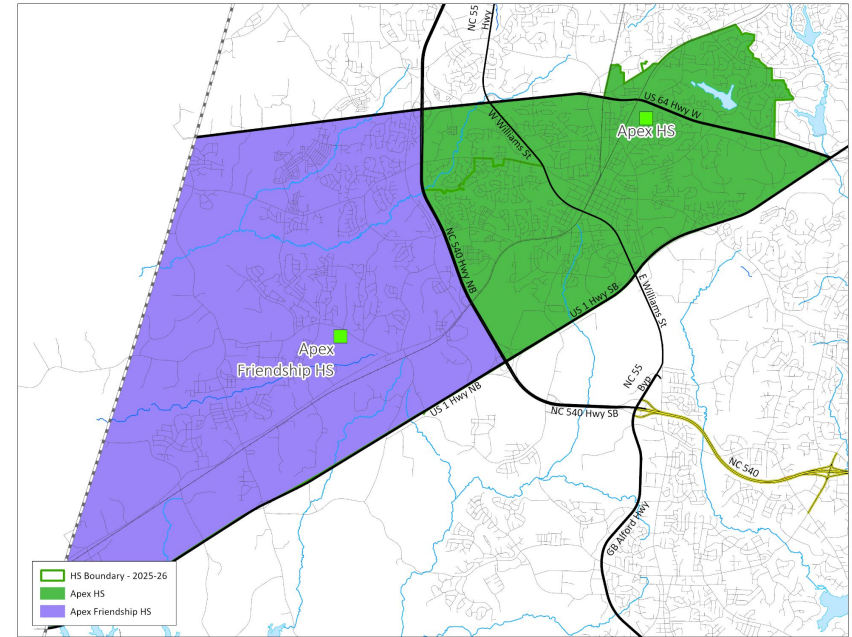


Proposed Base Areas

Existing Schools - Apex HS (from Apex Friendship HS)



Impacted Areas:



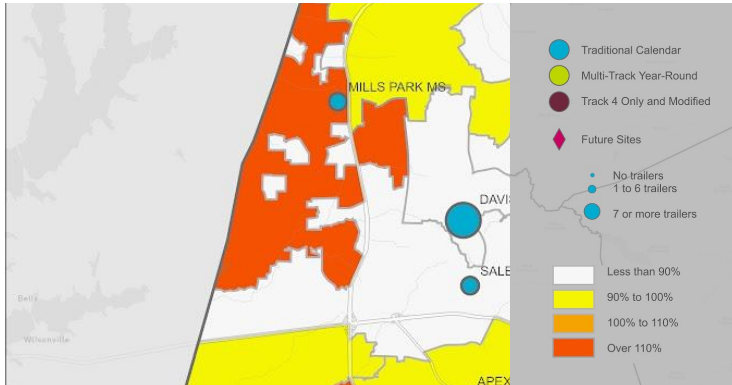
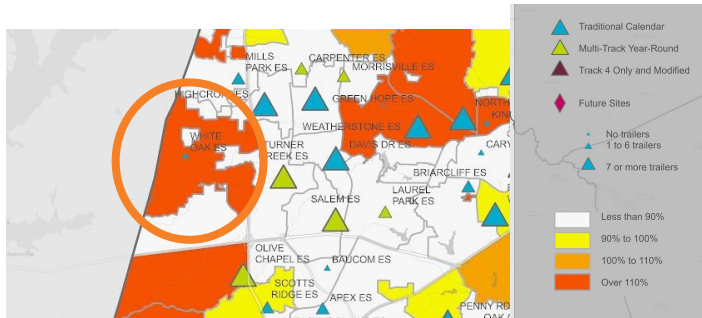
Proposed Base Areas

Existing Schools - Apex HS (from Apex Friendship HS)

2025-26 Base School	Calendar	Capacity w/ Trailers	2026-27 Projected Utilization w/ Trailers	2027-28 Projected Utilization w/ Trailers
Apex HS	Traditional	2240	97%	95%
Apex Friendship HS	Traditional	2384	115%	117%

2026-27 Base School	Calendar	Capacity w/ Trailers	2026-27 Projected Utilization w/ Trailers	2027-28 Projected Utilization w/ Trailers
Apex HS	Traditional	2240	104%	102%
Apex Friendship HS	Traditional	2384	108%	110%

Recommendations to Address Crowding and Continued Growth



10 Year Student Membership Forecast

Projected Enrollment Change, 2025 to 2034

↑

> 250

+

0

↓

< -250


2025

162,420 students

2034

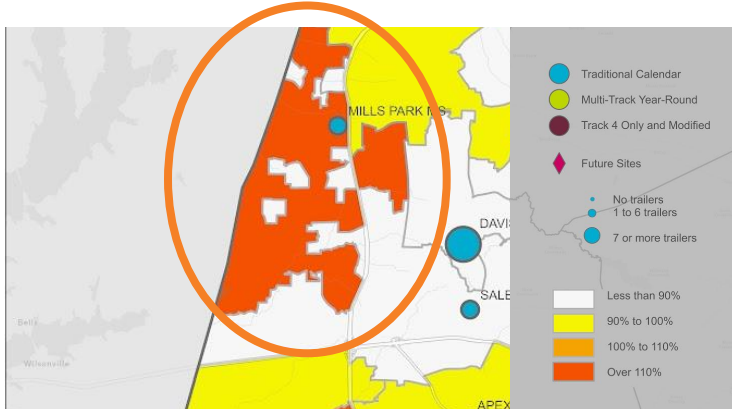
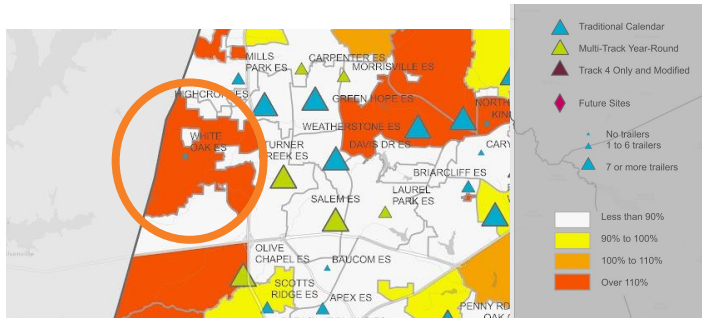
177,978 students

Total K-12 Projected Enrollment



WAKE COUNTY

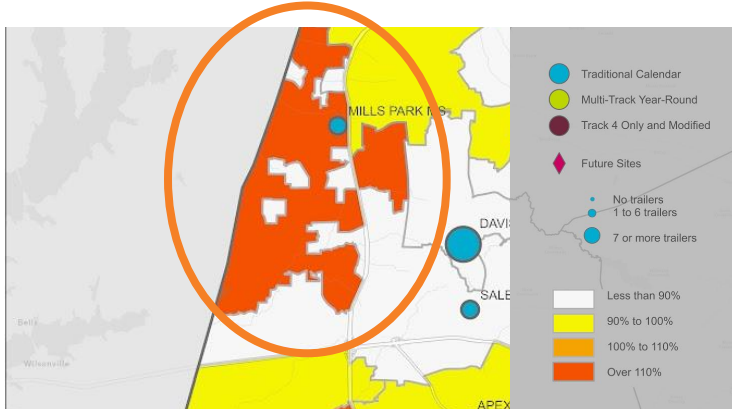
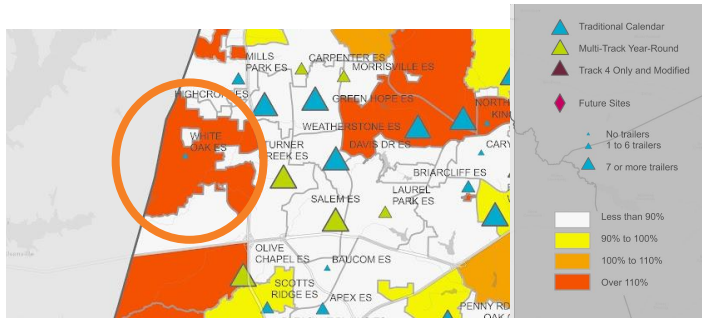
PUBLIC SCHOOL SYSTEM



10 Year Student Membership Forecast
Projected Enrollment Change, 2025 to 2034

Enrollment Change	2025	2034
> 250	162,420 students	177,978 students
0		
< -250		

WAKE COUNTY
PUBLIC SCHOOL SYSTEM

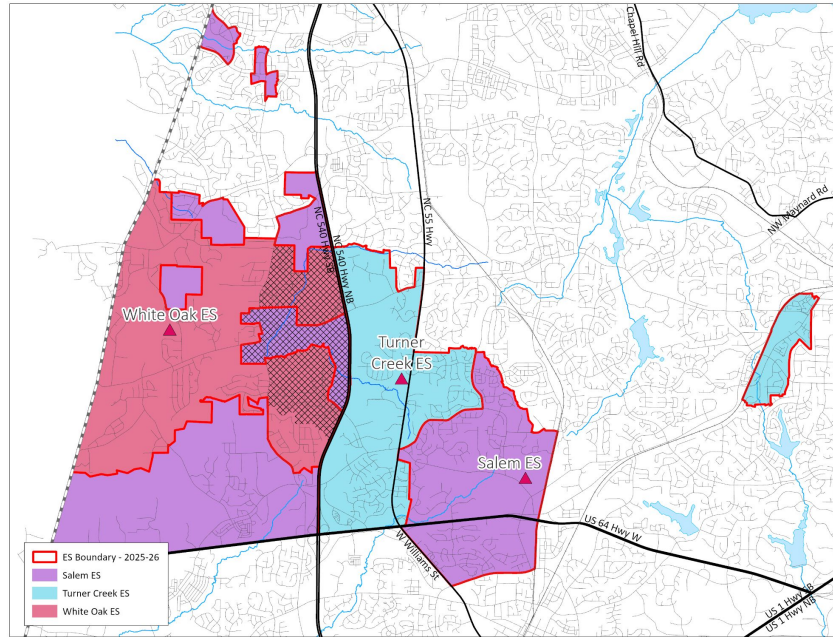


10 Year Student Membership Forecast
Projected Enrollment Change, 2025 to 2034

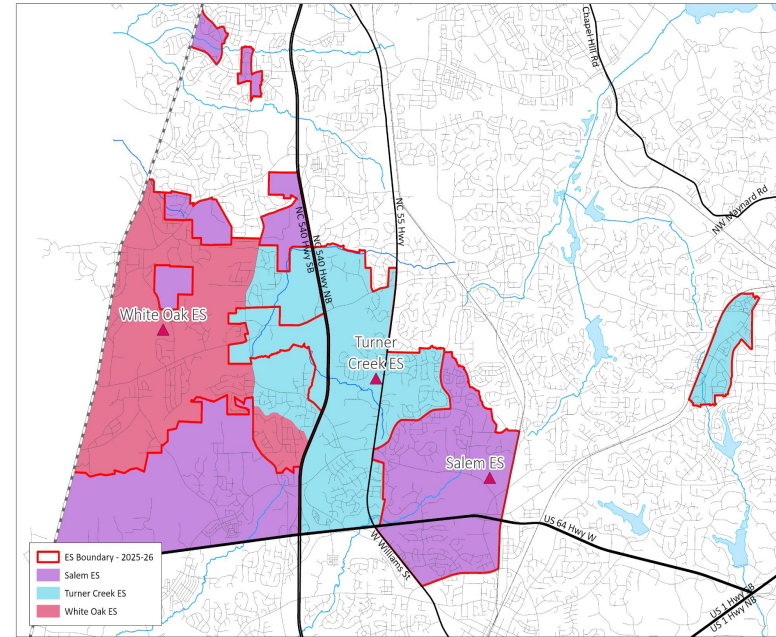
Change	2025	2034
> 250	162,420 students	177,978 students
0		
< -250		

WAKE COUNTY
PUBLIC SCHOOL SYSTEM

Existing Schools - Turner Creek ES (from White Oak ES)

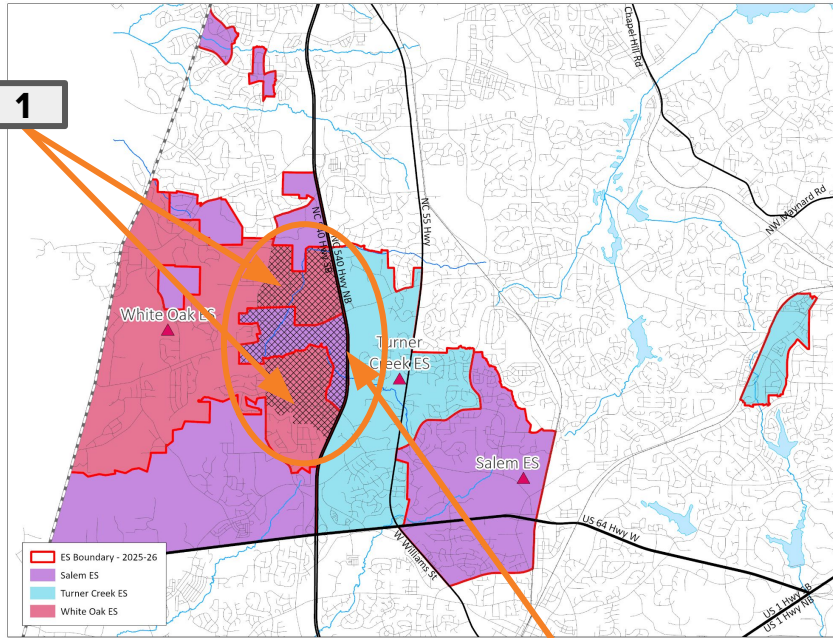


Impacted Areas:

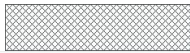


Proposed Base Areas

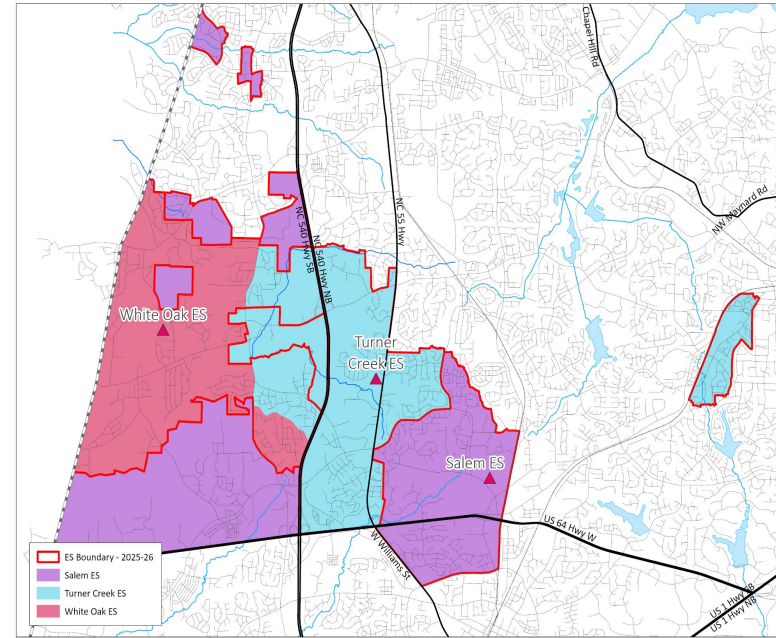
Existing Schools - Turner Creek ES (from White Oak ES)



Impacted Areas:



2



Proposed Base Areas



WAKE COUNTY
PUBLIC SCHOOL SYSTEM

Office of Student Assignment 70

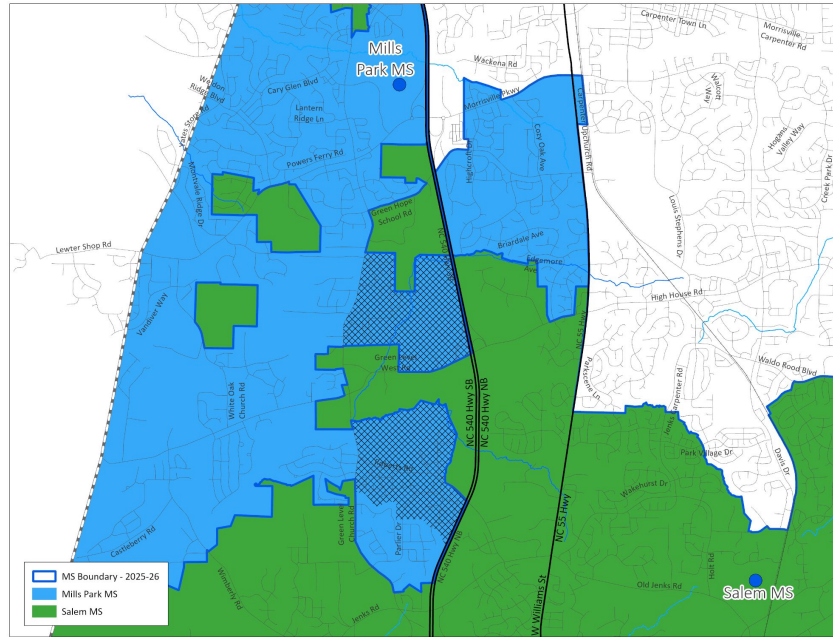
Existing Schools - Turner Creek ES (from White Oak ES)

2025-26 Base School	Calendar	Capacity w/ Trailers	2026-27 Projected Utilization w/ Trailers	2027-28 Projected Utilization w/ Trailers
Salem ES	Multi-track Year-round	856	87%	90%
Turner Creek ES	Multi-track Year-round	756	69%	72%
White Oak ES	Traditional	616	133%	134%

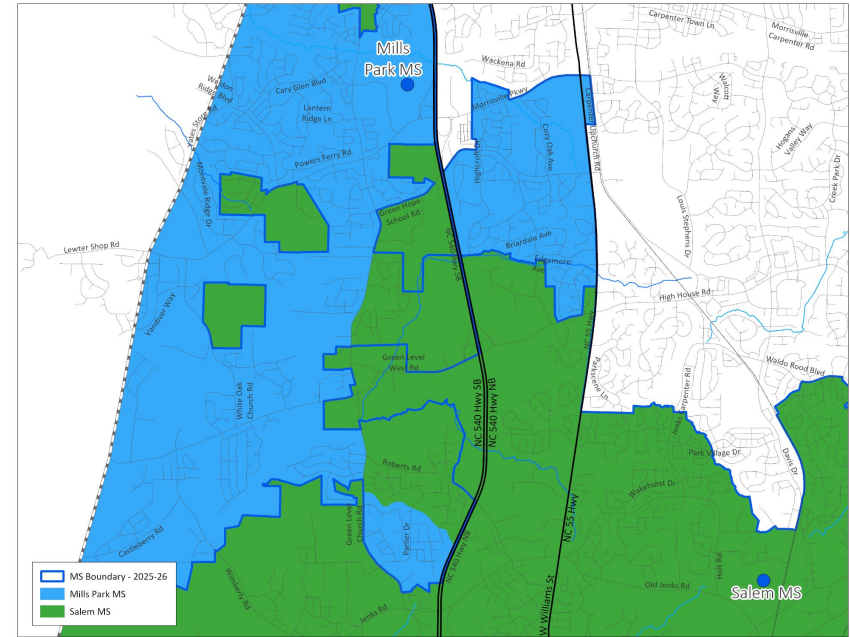
2026-27 Base School	Calendar	Capacity w/ Trailers	2026-27 Projected Utilization w/ Trailers	2027-28 Projected Utilization w/ Trailers
Salem ES	Multi-track Year-round	856	86%	89%
Turner Creek ES	Multi-track Year-round	756	99%	102%
White Oak ES	Traditional	616	98%	99%



Existing Schools - Salem MS (from Mills Park MS)

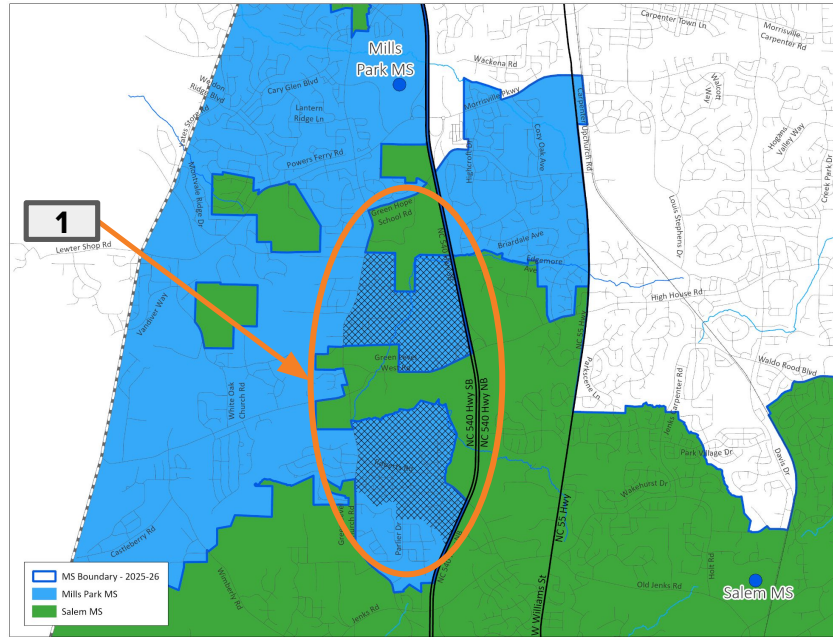


Impacted Areas:

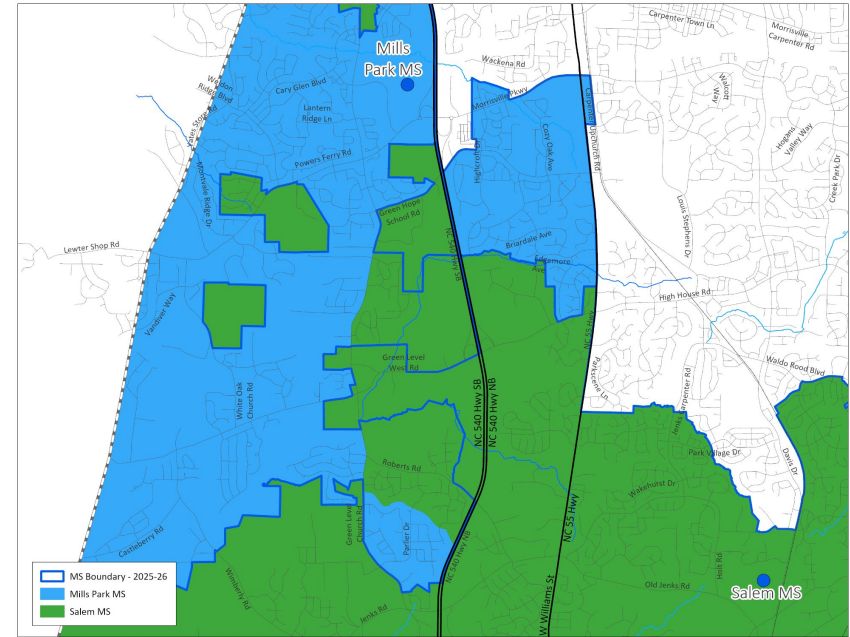


Proposed Base Areas

Existing Schools - Salem MS (from Mills Park MS)



Impacted Areas:



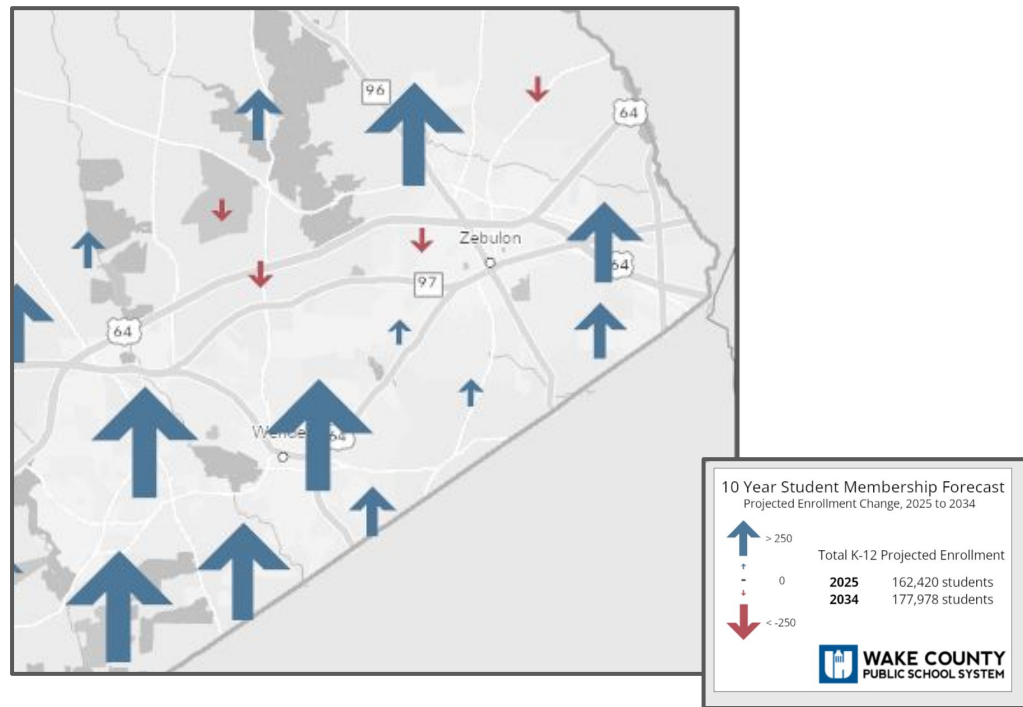
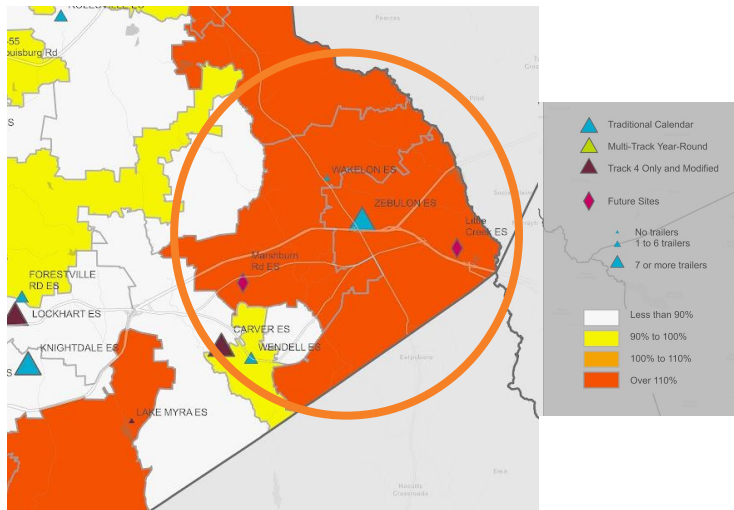
Proposed Base Areas

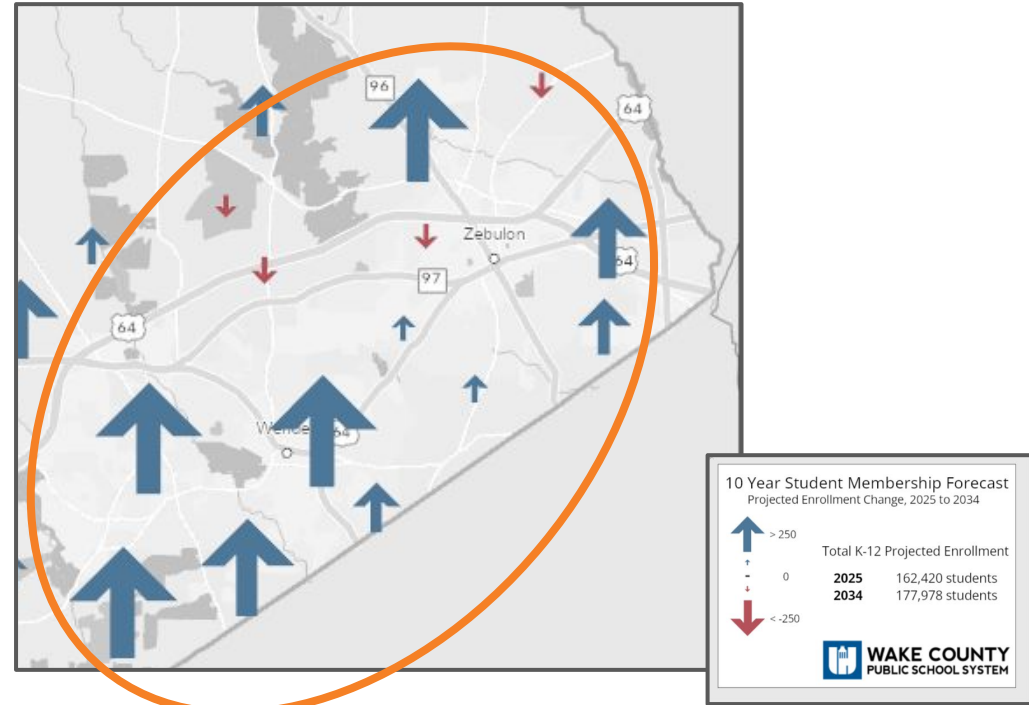
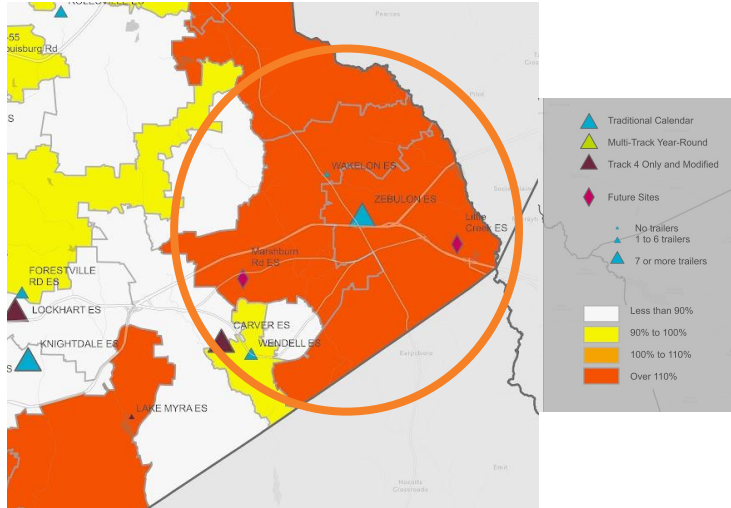
Existing Schools - Salem MS (from Mills Park MS)

2025-26 Base School	Calendar	Capacity w/ Trailers	2026-27 Projected Utilization w/ Trailers	2027-28 Projected Utilization w/ Trailers
Mills Park MS	Traditional	1352	116%	113%
Salem MS	Multi-track Year-round	1300	85%	87%

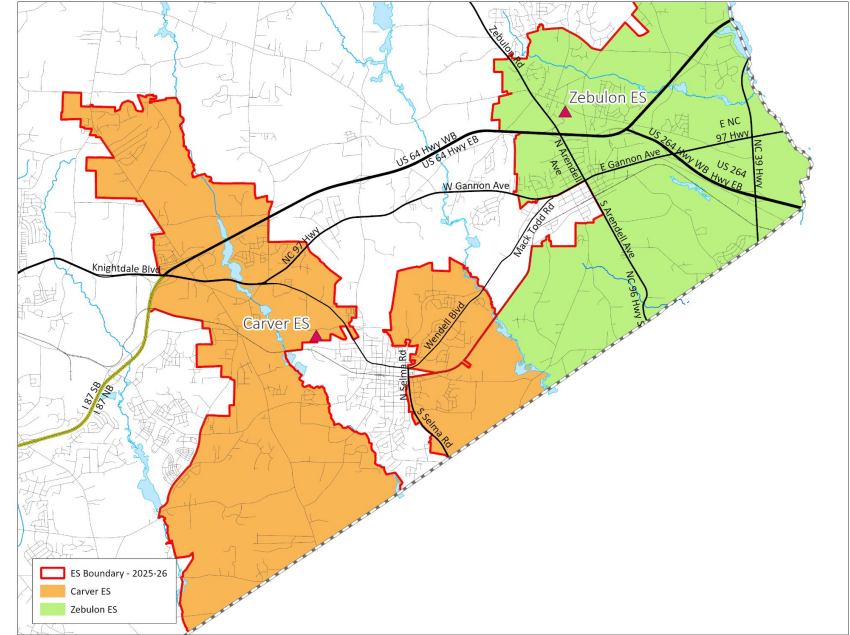
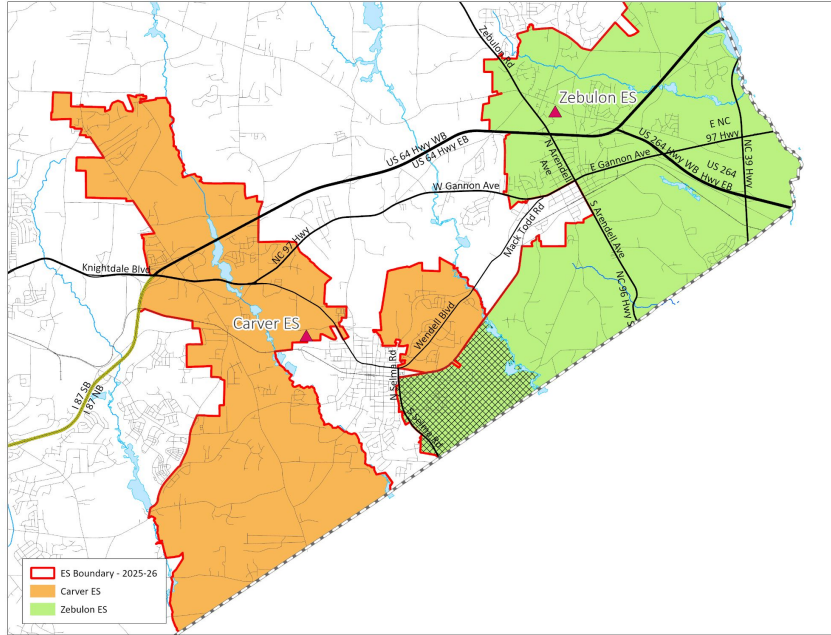
2026-27 Base School	Calendar	Capacity w/ Trailers	2026-27 Projected Utilization w/ Trailers	2027-28 Projected Utilization w/ Trailers
Mills Park MS	Traditional	1352	110%	107%
Salem MS	Multi-track Year-round	1300	86%***	89%***







Existing Schools - Carver ES (from Zebulon Magnet ES)

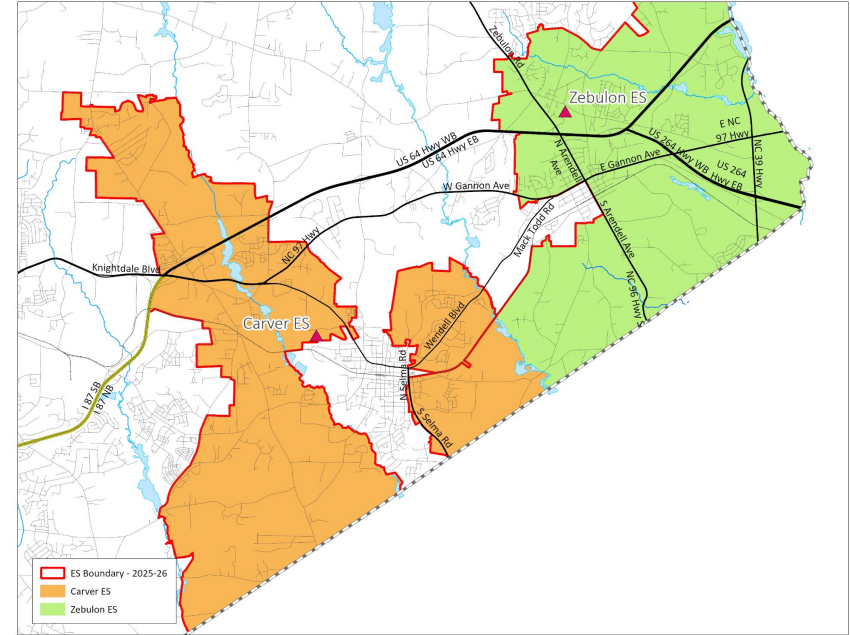
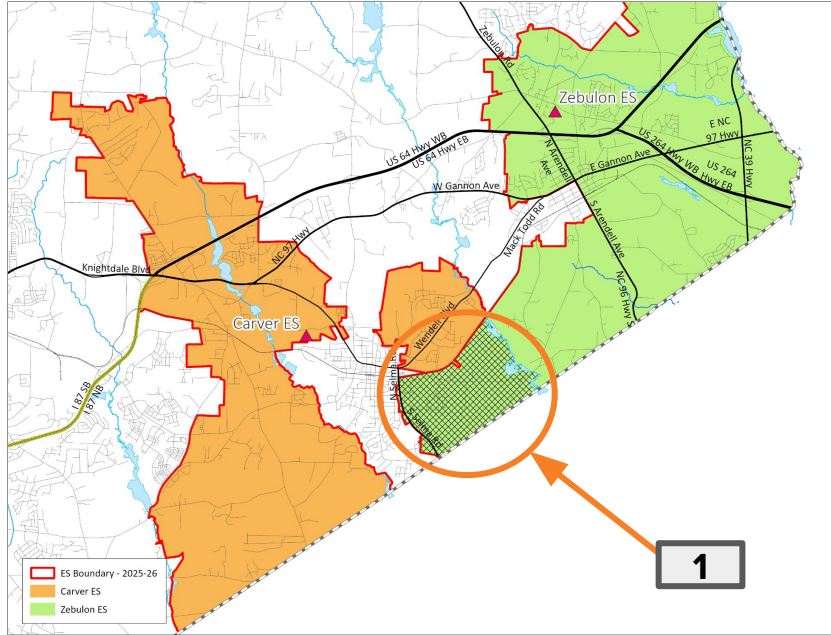


Impacted Areas:



Proposed Base Areas

Existing Schools - Carver ES (from Zebulon Magnet ES)



Impacted Areas:



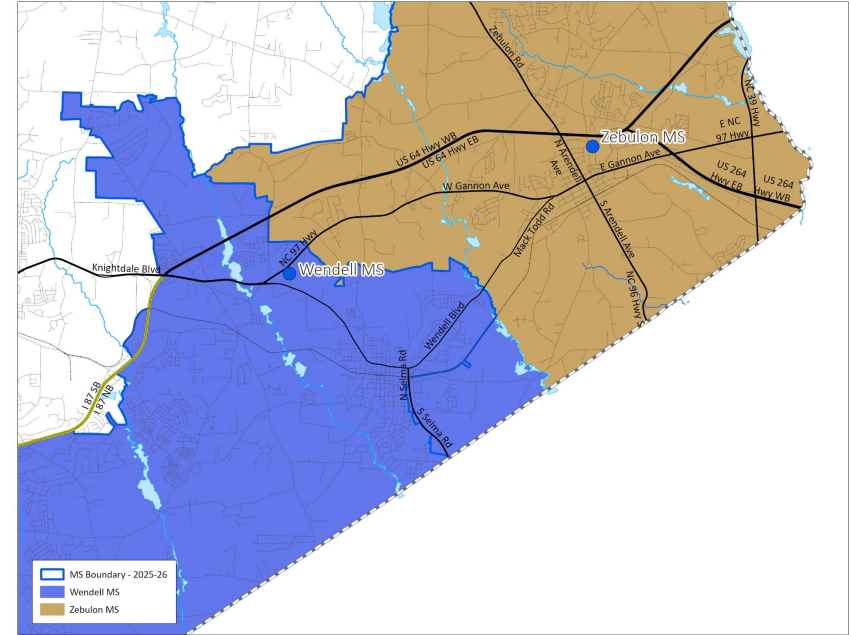
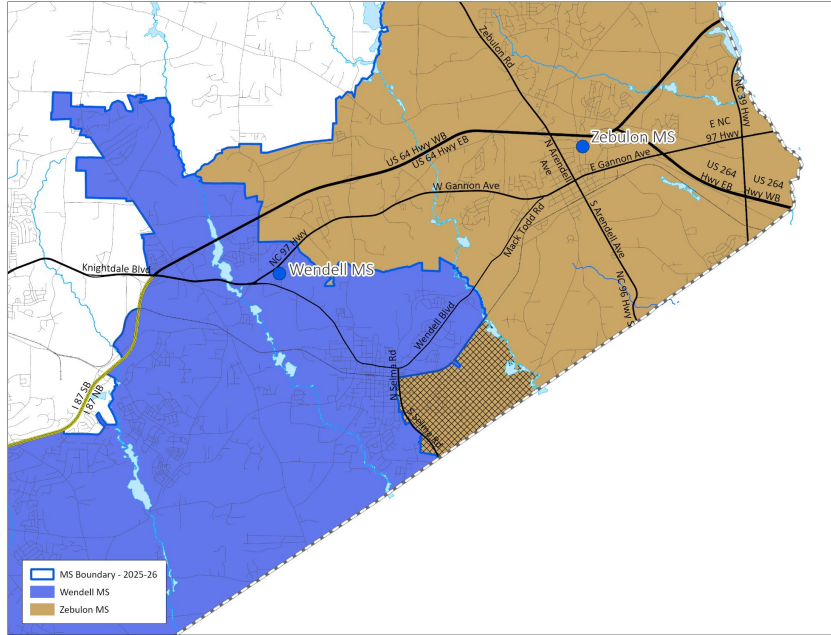
Proposed Base Areas

Existing Schools - Carver ES (from Zebulon Magnet ES)

2025-26 Base School	Calendar	Capacity w/ Trailers	2026-27 Projected Utilization w/ Trailers	2027-28 Projected Utilization w/ Trailers
Carver ES	Modified	668	114%	127%
Zebulon Magnet ES	Traditional	570	124%	143%

2026-27 Base School	Calendar	Capacity w/ Trailers	2026-27 Projected Utilization w/ Trailers	2027-28 Projected Utilization w/ Trailers
Carver ES	Modified	668	121%	135%
Zebulon Magnet ES	Traditional	570	115%	121%

Existing Schools - Wendell Magnet MS (from Zebulon Magnet MS)

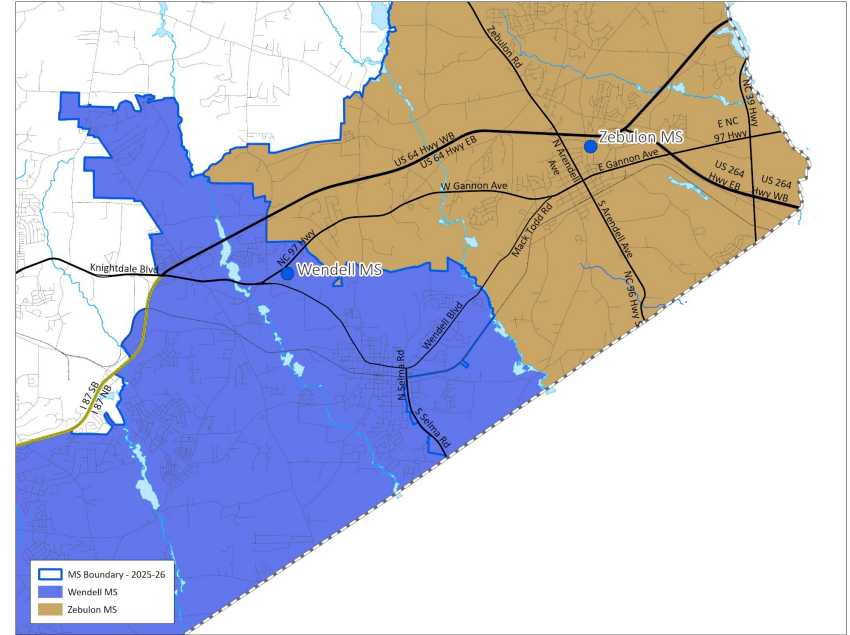
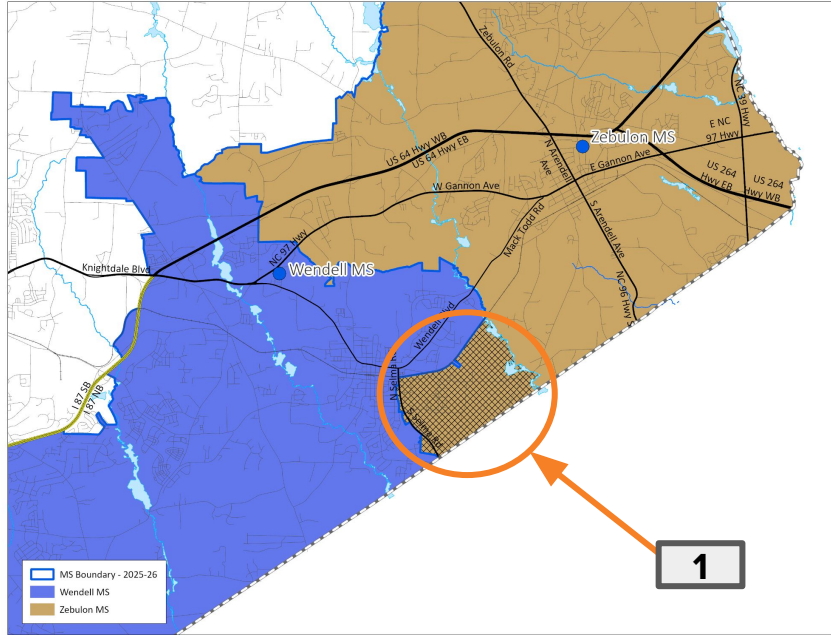


Impacted Areas:



Proposed Base Areas

Existing Schools - Wendell Magnet MS (from Zebulon Magnet MS)



Impacted Areas:



Proposed Base Areas

Existing Schools - Wendell Magnet MS (from Zebulon Magnet MS)

2025-26 Base School	Calendar	Capacity w/ Trailers	2026-27 Projected Utilization w/ Trailers	2027-28 Projected Utilization w/ Trailers
Wendell Magnet MS	Traditional	936	87%	91%
Zebulon Magnet MS	Traditional	1040	80%	84%

2026-27 Base School	Calendar	Capacity w/ Trailers	2026-27 Projected Utilization w/ Trailers	2027-28 Projected Utilization w/ Trailers
Wendell Magnet MS	Traditional	936	89%	94%
Zebulon Magnet MS	Traditional	1040	78%	82%

Recommended Calendar Application Area Changes

Elementary Calendar Application Changes

Recommendations based on proposed base assignment changes

Current Base	Current Calendar Application School(s)	Proposed Base	Proposed Calendar Application School
Banks (MTYR)	Fuquay-Varina (T)	Hilltop Needmore (MTYR)	n/a
Middle Creek (MTYR)	Swift Creek (T)	Oak Grove (MTYR)	n/a
Middle Creek (MTYR)	Swift Creek (T)	West Lake (MTYR)	n/a
White Oak (T)	Turner Creek (MTYR)	Turner Creek (MTYR)	n/a
Salem (MTYR)	Baucom (T)	Turner Creek (MTYR)	n/a
Zebulon Magnet (T)	Carver (Mod)	Carver (Mod)	n/a

Elementary Calendar Application Changes *(continued)*

Recommendations based on improving transportation efficiency

Current Base	Current Calendar Application School(s)	Proposed Calendar Application School
Abbotts Creek (T)	Brassfield (MTYR) & Durant Road (YR4)	Durant Road (YR4)
Hodge Magnet (YR4)	Forestville Road (T) & Knightdale (T)	n/a



Middle School Calendar Application Changes

Recommendations based on proposed base assignment changes

Current Base	Current Calendar Application School(s)	Proposed Base	Proposed Calendar Application School
Dillard Drive Magnet (T)	Lufkin Road (MTYR)	West Lake (YR4)	n/a
Herbert Akins Road (MTYR)	Holly Ridge (T)	West Lake (YR4)	n/a
Lufkin Road (MTYR)	Apex (T)	Apex (T)	Lufkin Road (MTYR)
Mills Park (T)	Salem (MTYR)	Salem (MTYR)	Apex (T)
Salem (MTYR)	Apex (T)	Apex (T)	Lufkin Road (MTYR)

Information & Updates

www.wcpss.net/2026enrollmentproposal

www.wcpss.net/assignmentplanning

Review

Timeline for Plan Review & Approval

Including Public Engagement Activities



Planning Timeline

March 4, 2025 - Public Engagement Plan for the 2026-2027 WCPSS Enrollment Plan [BoE Work Session]

April 8, 2025 - Initial Recommendations for Calendar Changes for 2026-27 [BoE Work Session]

May 6, 2025 - Initial Planning Discussion for 2026-27 Enrollment Plan [BoE Work Session]

June 3, 2025 - Final Recommendations for Calendar Changes for 2026-27 [BoE Meeting]

June 17, 2025 - Review Progress of Public Engagement Plan [BoE Work Session]

September 2, 2025 - Initial Draft of 2026-27 Enrollment Plan [BoE Work Session]

October 21, 2025 - Feedback Review/ Revised Draft of 2026-27 Enrollment Plan [BoE Work Session]

October 21, 2025 - Public Hearing [Special Called or Regular BoE Meeting]

November 18, 2025 - Final Draft of 2026-27 Enrollment Plan for Review & Approval [BoE Work Session & Meeting]

Next Steps

- **September 2:** District website updated with initial draft information
wcpss.net/2026enrollmentproposal & www.wcpss.net/assignmentplanning
- **September 2 - October 5:** ThoughtExchange open and collecting feedback and questions on the initial draft (wcpss.net/initialdraftfeedback)
- **September 9 - September 24:** Host virtual and in-person public engagement sessions
 - September 9, 6:00-7:30 pm - Hilltop Needmore ES & Related Impacts (virtual)
 - September 11, 6:00-7:30 pm - Apex Area Impacts (virtual)
 - September 17, 6:00-7:30 pm - Eastern Area Impacts & General Overview (virtual)
 - September 24, 6:00-8:00 pm - Open House/ General Overview (in-person)

Information & Updates

www.wcpss.net/2026enrollmentproposal

www.wcpss.net/assignmentplanning

Share

Initial Thoughts & Feedback for Staff Review & Consideration

Questions?

Feedback, Thoughts & Ideas...

Attachments

- Board Policy 4150 (included)
- Detailed Maps
- Data Reports
- Public Engagement Summary Report
- Review of Assignment Planning Process

Board Policy 4150: Section A

Drawing of School Attendance Areas

Board Policy 4150: Section A

A. Drawing of School Attendance Areas

The superintendent shall recommend to the Board of Education school assignment areas for the schools in the system. The Board will review the Superintendent's recommendation and make adjustments when needed. Assignment area boundaries shall be shown on maps approved by the Board and open to public inspection.

The Board shall complete any review of the assignment areas by January 1. Any proposed changes in the school assignment areas after January 1 shall require notice, a waiver of this policy provision, and a public hearing. Notification of assignment for students for the coming school year shall be made and distributed prior to April 1.

1. The assignment areas will be developed by balancing, to the extent reasonable, the goals and factors set forth below and will include target ranges, where appropriate, to accomplish these goals and factors:

Board Policy 4150: Section A (*continued*)

a. Student Achievement

To the extent practicable, student populations at each school will provide an optimal opportunity for academic success for all students. Factors for consideration include:

- 1) providing an opportunity for families to apply to designated application schools;
- 2) minimizing high concentrations of low-performing students at each school; and
- 3) minimizing high concentrations of students from low income families at each school.

Board Policy 4150: Section A (*continued*)

b. Stability

To the extent practicable, a student who is reassigned will be provided an opportunity to stay at the current school for one additional year if it is the terminal grade for an elementary or middle school (grades 5 and 8), and the student's siblings will be provided an opportunity to attend the same school for the one year period. The student and siblings must apply for these transfers at the designated time.

To the extent practicable, any student currently in high school who is reassigned from an existing school to an existing school will be provided an opportunity to stay at the current school until the terminal grade (grade 12). The student must apply for this transfer at the designated time.

Additional opportunities to remain at the current school, including for siblings, may be included in the annual student enrollment plan.

A change in domicile does not preserve the previous school assignment. However, Early College and Magnet application assignments are valid through the terminal grade of the school.

Board Policy 4150: Section A (*continued*)

c. Proximity

To the extent practicable, base school assignments will be within a reasonable distance of the student's home. Factors for consideration include:

- 1) allowing students living within the immediate vicinity of a school, defined by the assignment plan, to attend that school; and
- 2) minimizing splitting of neighborhoods when developing base attendance areas.

d. Operational Efficiency

To the extent practicable, assignments will optimize the use of school facilities and transportation resources. Factors for consideration include:

- 1) minimizing under-enrolled schools;
- 2) minimizing overcrowded schools; and
- 3) maximizing transportation efficiencies.