



## Inspection Overview

**Organization:** Wake County School District  
**Site:** Timber Drive Elem  
**Type:** Low Frequency  
**Status:** Complete  
**Inspector:** Bill Marrs  
**CPSI Number:** 32333-1018  
**Phone Number:** (133) 690-9093  
**Completed on:** 2/25/2016

### General Inspection Comments

WO. ASSET 14349711. 56372 14349766. 56611 14349767. 66566

### Non-Defective Items

**Item:** Asset 66566 wo19734852  
**Equipment Category:** Playground Equipment  
**Equipment Type:** Climbing Equipment  
**Equipment Item:** Composite structure  
**Manufacturer:** Playworld  
**AgeGroup:** All  
**Status:** Okay  
**Priority:** None (1=High - 5=Low)

#### Inventory



**Item:** Protective surfacing  
**Equipment Category:** Surface  
**Equipment Type:** Surface  
**Equipment Item:** Rubber Tile  
**Manufacturer:** Unknown/None  
**AgeGroup:** All  
**Status:** Okay  
**Priority:** None (1=High - 5=Low)

#### Inventory



**Item:** Safety surface 56611  
**Equipment Category:** Surface  
**Equipment Type:** Surface  
**Equipment Item:** Eng. Wood Fiber  
**Manufacturer:** Unknown/None  
**AgeGroup:** All  
**Status:** Okay  
**Priority:** None (1=High - 5=Low)

#### Inventory



### Defective Items

**Item:** Asset 56372 wo19734836  
**Equipment Category:** Playground Equipment  
**Equipment Type:** Climbing Equipment  
**Equipment Item:** Composite Structure, Climber  
**Manufacturer:** GameTime  
**AgeGroup:** All  
**Status:** Needs Maintenance  
**Part:** Entire unit  
**Problem:** Corrosion  
**Action:** Paint  
**Priority:** 5  
**Repair Notes:** N/A  
**Comments:** N/A

**Inventory**



**Issue**



**Item:** Asset 56372 wo19734836  
**Equipment Category:** Playground Equipment  
**Equipment Type:** Climbing Equipment  
**Equipment Item:** Composite Structure, Climber  
**Manufacturer:** GameTime  
**AgeGroup:** All  
**Status:** Needs Maintenance  
**Part:** Deck  
**Problem:** Cracked  
**Action:** Repair  
**Priority:** 3  
**Repair Notes:** N/A  
**Comments:** N/A

**Inventory**



**Issue**



**Item:** Asset 56372 wo19734836  
**Equipment Category:** Playground Equipment  
**Equipment Type:** Climbing Equipment  
**Equipment Item:** Composite Structure, Climber  
**Manufacturer:** GameTime  
**AgeGroup:** All  
**Status:** Needs Maintenance  
**Part:** Plastic slide  
**Problem:** Cracked  
**Action:** Replace  
**Priority:** 3  
**Repair Notes:** N/A  
**Comments:** N/A

**Inventory**



**Issue**



**Item:** Asset 56372 wo19734836  
**Equipment Category:** Playground Equipment  
**Equipment Type:** Climbing Equipment  
**Equipment Item:** Composite Structure, Climber  
**Manufacturer:** GameTime  
**AgeGroup:** All  
**Status:** Needs Maintenance  
**Part:** Handrail  
**Problem:** Insufficient area  
**Action:** Repair  
**Priority:** 2  
**Repair Notes:** N/A  
**Comments:** N/A

**Inventory**



**Issue**



**Item:** Asset 56611 wo19734851  
**Equipment Category:** Playground Equipment  
**Equipment Type:** Climbing Equipment  
**Equipment Item:** Composite structure  
**Manufacturer:** Playworld  
**AgeGroup:** All  
**Status:** Needs Maintenance  
**Part:** Deck  
**Problem:** Cracked  
**Action:** Repair  
**Priority:** 4  
**Repair Notes:** N/A  
**Comments:** N/A

**Inventory**



**Issue**



**Item:** Asset 56611 wo19734851  
**Equipment Category:** Playground Equipment  
**Equipment Type:** Climbing Equipment  
**Equipment Item:** Composite structure  
**Manufacturer:** Playworld  
**AgeGroup:** All  
**Status:** Needs Maintenance  
**Part:** Not applicable  
**Problem:** Non Compliant  
**Action:** Replace  
**Priority:** 3  
**Repair Notes:** N/A  
**Comments:** N/A

**Inventory**



**Issue**



**Item:** Asset 56611 wo19734851  
**Equipment Category:** Playground Equipment  
**Equipment Type:** Climbing Equipment  
**Equipment Item:** Composite structure  
**Manufacturer:** Playworld  
**AgeGroup:** All  
**Status:** Needs Maintenance  
**Part:** Plastic slide  
**Problem:** Cracked  
**Action:** Replace  
**Priority:** 3  
**Repair Notes:** N/A  
**Comments:** N/A

**Inventory**



**Issue**



**Item:** Asset-66566  
**Equipment Category:** Playground Equipment  
**Equipment Type:** Climbing Equipment  
**Equipment Item:** Composite structure  
**Manufacturer:** Playworld  
**AgeGroup:** All  
**Status:** Needs Maintenance  
**Part:** Deck  
**Problem:** Cracked  
**Action:** Repair  
**Priority:** 4  
**Repair Notes:** N/A  
**Comments:** N/A

**Inventory**



**Issue**



**Item:** Asset-66566  
**Equipment Category:** Playground Equipment  
**Equipment Type:** Climbing Equipment  
**Equipment Item:** Composite structure  
**Manufacturer:** Playworld  
**AgeGroup:** All  
**Status:** Needs Maintenance  
**Part:** Hardware  
**Problem:** Non Compliant  
**Action:** Repair  
**Priority:** 2  
**Repair Notes:** N/A  
**Comments:** N/A

**Inventory**



**Issue**



Inspector Signature

X

---

Manager Signature

X

---

The inspection is intended solely to evaluate whether the playground equipment meets current safety standards. This report addresses the condition of playground equipment as of the date and time of the inspection only and does not address any changes in, damage, additions or alterations to, or removal of any of the equipment after the date and time of the inspection. We recommend that an initial compliance inspection be conducted by a knowledgeable, trained playground equipment inspector followed up by a low frequency inspection at least once per year. Playground Guardian also suggests an inspection be conducted (a) whenever equipment is damaged, added, removed or altered, (b) when the equipment will be used by children in age groups other than those considered in prior inspections, (c) whenever the equipment is subject to damage, abuse or unusual wear and tear, and (d) as circumstances otherwise warrant.

The inspection is not invasive or technically exhaustive, and our inspectors will not attempt to access inaccessible areas or open or unlock any secured playground equipment in connection with the inspection. Latent, concealed and hidden defects and deficiencies are specifically excluded from the inspection. Abnormal or unusual circumstances may warrant or require further or additional safety procedures and considerations.

Playground Guardian provides the Limited Warranty (as defined in the attached terms and conditions) under this Contract. Playground Guardian has no liability, and assumes no liability, in connection with any services, general items or materials provided, or any safety suggestions made, by Playground Guardian. The inspection may not disclose or report every possible safety procedure that could be recommended or made with respect to the playground equipment.

Except as expressly provided in the Limited Warranty, Playground Guardian makes no representations or warranties of any kind or nature, including without limitation any representations or warranties as to merchantability, fitness for any particular purpose or infringement. Further, Playground Guardian makes no representations or warranties that any of the items inspected are designed or constructed in a good or workmanlike manner or will continue to perform in the future as they are performing at the time of inspection.

This inspection does not address the protective surfacing for compliance as it pertains to impact attenuating results such as HIC & GMAX.

Important: This information is for internal use only and is not to be released or otherwise disseminated to anyone other than an agency official, or designated representative.

### Priority Key

#### High

1. Permanent disability, loss of life or limb in a high risk area
2. Permanent disability, loss of life or limb in a low risk area
3. Serious injury resulting in temporary disability
4. Minor injury
5. Noncompliant

#### Low



## Inspection Overview

**Organization:** Wake County Public Schools  
**Site:** Timber Drive Elem  
**Type:** Low Frequency  
**Status:** Scheduled  
**Inspector:** Bill Marrs  
**Completed on:** 4/11/2017

### Non-Defective Items

**Item:** Asset 66566 wo17154039  
**Equipment Category:** Playground Equipment  
**Equipment Type:** Climbing Equipment  
**Equipment Item:** Composite structure

**Manufacturer:** Playworld  
**AgeGroup:** All  
**Status:** Okay  
**Priority:** None

#### Inventory



**Item:** Protective surfacing  
**Equipment Category:** Surface  
**Equipment Type:** Surface  
**Equipment Item:** Rubber Tile

**Manufacturer:** Unknown/None  
**AgeGroup:** All  
**Status:** Okay  
**Priority:** None

#### Inventory



**Item:** Safety surface 56611  
**Equipment Category:** Surface  
**Equipment Type:** Surface  
**Equipment Item:** Eng. Wood Fiber

**Manufacturer:**  
**AgeGroup:**  
**Status:**  
**Priority:**

Unknown/None  
All  
Okay  
None

**Inventory**



## Defective Items

**Item:** Asset 56372 wo17153994  
**Equipment Category:** Playground Equipment  
**Equipment Type:** Climbing Equipment  
**Equipment Item:** Composite Structure, Climber  
**Manufacturer:** GameTime  
**AgeGroup:** All  
**Repair Notes:** N/A  
**Comments:** N/A

**Status:** Needs Maintenance  
**Part:** Entire unit  
**Problem:** Corrosion  
**Action:** Paint  
**Priority:** 4

**Issue**



**Inventory**



**Item:** Asset 56372 wo17153994  
**Equipment Category:** Playground Equipment  
**Equipment Type:** Climbing Equipment  
**Equipment Item:** Composite Structure, Climber  
**Manufacturer:** GameTime  
**AgeGroup:** All

**Status:** Needs Maintenance  
**Part:** Deck  
**Problem:** Cracked  
**Action:** Replace  
**Priority:** 3 - Medium

**Repair Notes:** N/A  
**Comments:** PVC coatings are starting to peel

**Issue**



**Inventory**





**Item:** Asset 56611 wo17154038  
**Equipment Category:** Playground Equipment  
**Equipment Type:** Climbing Equipment  
**Equipment Item:** Composite structure  
**Manufacturer:** Playworld  
**AgeGroup:** All

**Repair Notes:** N/A  
**Comments:** PVC coatings are starting to peel

**Status:** Needs Maintenance  
**Part:** Deck  
**Problem:** Cracked  
**Action:** Replace  
**Priority:** 3 - Medium

**Issue**



**Inventory**



**Item:** Asset 56611 wo17154038  
**Equipment Category:** Playground Equipment  
**Equipment Type:** Climbing Equipment  
**Equipment Item:** Composite structure  
**Manufacturer:** Playworld  
**AgeGroup:** All

**Repair Notes:** N/A  
**Comments:** Entire unit needs painting

**Status:** Needs Maintenance  
**Part:** Entire unit  
**Problem:** Corrosion  
**Action:** Paint  
**Priority:** 4

**Issue**



**Inventory**



**Item:** Asset 56611 wo17154038  
**Equipment Category:** Playground Equipment  
**Equipment Type:** Climbing Equipment  
**Equipment Item:** Composite structure  
**Manufacturer:** Playworld  
**AgeGroup:** All

**Repair Notes:** N/A  
**Comments:** All S hooks are improperly closed

**Status:** Needs Maintenance  
**Part:** Not applicable  
**Problem:** Entanglement  
**Action:** Replace  
**Priority:** 2

**Issue**



**Inventory**

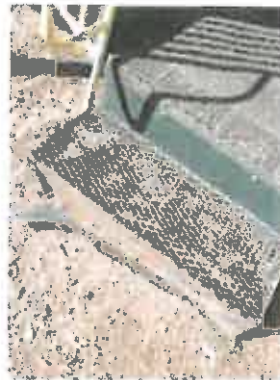


**Item:** Asset 56611 wo17154038  
**Equipment Category:** Playground Equipment  
**Equipment Type:** Climbing Equipment  
**Equipment Item:** Composite structure  
**Manufacturer:** Playworld  
**AgeGroup:** All

**Repair Notes:** N/A  
**Comments:** All decks need replaced

**Status:** Needs Maintenance  
**Part:** Entire unit  
**Problem:** Cracked  
**Action:** Replace  
**Priority:** 2

**Issue**



**Inventory**



**Item:** Asset 56611 wo17154038  
**Equipment Category:** Playground Equipment  
**Equipment Type:** Climbing Equipment  
**Equipment Item:** Composite structure  
**Manufacturer:** Playworld  
**AgeGroup:** All

**Repair Notes:** N/A  
**Comments:** Must have a minimum 6' fall zone

**Status:** Needs Maintenance  
**Part:** Ladder  
**Problem:** Insufficient area  
**Action:** Increase surface size  
**Priority:** 3 - Medium

**Issue**



**Inventory**



**Item:** Asset-66566  
**Equipment Category:** Playground Equipment  
**Equipment Type:** Climbing Equipment  
**Equipment Item:** Composite structure  
**Manufacturer:** Playworld  
**AgeGroup:** All

**Repair Notes:** N/A  
**Comments:** N/A

**Status:** Needs Maintenance  
**Part:** Deck  
**Problem:** Crush & Shear  
**Action:** Replace  
**Priority:** 3 - Medium

**Issue**



**Inventory**



**Item:** Asset-66566  
**Equipment Category:** Playground Equipment  
**Equipment Type:** Climbing Equipment  
**Equipment Item:** Composite structure  
**Manufacturer:** Playworld  
**AgeGroup:** All

**Repair Notes:** N/A  
**Comments:** Chains are broken

**Status:** Needs Maintenance  
**Part:** Stepping Stones  
**Problem:** Broken  
**Action:** Replace  
**Priority:** 3 - Medium

**Issue**



**Inventory**



**Item:** Asset-66566  
**Equipment Category:** Playground Equipment  
**Equipment Type:** Climbing Equipment  
**Equipment Item:** Composite structure  
**Manufacturer:** Playworld  
**AgeGroup:** All

**Repair Notes:** N/A  
**Comments:** More than two threads

**Status:** Needs Maintenance  
**Part:** Hardware  
**Problem:** Entanglement  
**Action:** Repair  
**Priority:** 2

**Issue**



**Inventory**



**Item:** Asset-66566  
**Equipment Category:** Playground Equipment  
**Equipment Type:** Climbing Equipment  
**Equipment Item:** Composite structure  
**Manufacturer:** Playworld  
**AgeGroup:** All  
  
**Repair Notes:** N/A  
**Comments:** PVC coatings are starting to peel

**Status:**  
**Part:**  
**Problem:**  
**Action:**  
**Priority:**

**Needs Maintenance**  
Deck  
Cracked  
Replace  
3 - Medium

**Issue**



**Inventory**

