

Presented by



# HOW TO DISSECT A CORN KERNEL

## Overview and objective:

Students will discover how to **dissect a kernel of corn and find the components used to produce new plants.**

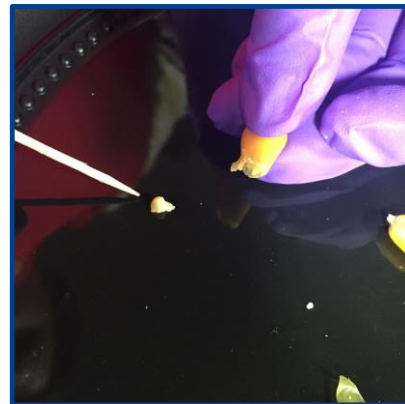
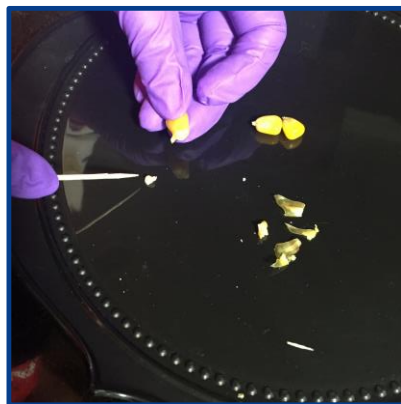
**Dissection** is the action of methodically cutting up a body, part or plant in order to study its internal parts.

## Procedure:

1. Soak your dried seed for 48 hours to soften the tissue.
2. Over your paper plate, use your fingernail to pull off the tip cap of the seed (as you pull it off, you'll notice the thin seed coat or pericarp).
3. Peel off as much as you can, observing how it covers the entire seed.
4. The lighter colored triangle is where the embryo is located. To complete dissection, isolate this area by using a fingernail to remove the endosperm and expose the small embryo.

## WHAT YOU WILL NEED:

- Corn kernels
- Small paper plate
- Water
- A toothpick
- Paper towel
- Safety goggles
- Safety gloves
- Adult supervision



Visit us on [www.facebook.com/abc11scienceclub](https://www.facebook.com/abc11scienceclub) and share the video or picture of your **REGROWN VEGGIES!**

[www.abc11.com/scienceclub](http://www.abc11.com/scienceclub)

