

ILLINOIS GAMING BOARD



160 North LaSalle Street, Suite 300, Chicago, Illinois 60601 Tel:312/814-4700 Fax:312/814-4602

Statewide Voluntary Self-Exclusion Program Annual Report 2009

August 20, 2009

Presented by Director Gene O'Shea

Program Overview

On July 1, 2002, the Illinois Gaming Board initiated a Statewide Self-Exclusion Program for Problem Gamblers. The Program is the result of special two-day meeting held by the Board regarding problem gambling in May 2000. The Board created the Program in response to testimony presented at that meeting by problem gamblers, mental health experts and others. The Board created the Statewide Self-Exclusion Program for Problem Gamblers via the Rule making process.

The Illinois Gaming Board's Statewide Voluntary Self-Exclusion Program is modeled after the state of Missouri's Disassociated Persons Program. The Missouri Gaming Commission has operated a self-exclusion program since 1996. The IGB's Program, however, has enhanced the Missouri model. Unlike Missouri, the IGB Program includes a donation component to help fund groups devoted to helping problem gamblers, and utilizes professionals in the mental health field who have volunteered to act as Program facilitators through the enrollment process.

Program Implementation

The Statewide Voluntary Self-Exclusion Program (SEP) began enrolling participants on July 1, 2002 at the two IGB offices in Chicago and Springfield. The Program has expanded since that time to include a total of 27 enrollment sites. Twenty-two of the enrollment sites are in Illinois and five are in Iowa. The number of participants has climbed as enrollment sites have been added. In the first three months, the bulk of the enrollments took place at the Chicago office. In mid-August 2002 the Outreach Foundation of Illinois volunteered to act as an enrollment site. The Outreach Foundation's members work closely with Gambler's Anonymous. As of August 2009 the Outreach Foundation has been the busiest non-IGB site, enrolling to date a total of 617 persons in the Program.

The Program continued to grow as planned in October 2002 when IGB agents and supervisors at the riverboat casino operations began processing enrollment applications. To date,

5,416 persons have enrolled at the docksite locations. The Casino Queen in East St. Louis has been the busiest site, enrolling 1,177 persons to date.

In November 2002 additional enrollment sites were added at the request of the Illinois Department of Human Services. The new enrollment sites included Chestnut Health Systems in Granite City; the Fellowship House in Anna; Human Resources Development Institute in Chicago; the Northern Illinois Council on Alcoholism and Substance Abuse in Buffalo Grove; the Share Program in Hoffman Estates; the Way Back Inn in Maywood; the Robert Young Center in Rock Island; Loretto Hospital in Chicago and Renz Addiction Counseling Center in Elgin. The most active DHS designated site has been the Share Program in Hoffman Estates with 214 enrolments.

Two of the DHS designated sites, the Robert Young Center in Rock Island, and Chestnut Health Systems in Granite City have ceased operating as enrollment sites. The Robert Young Community Health Center in Rock Island was dropped due to a lack of interest in the Self-Exclusion Program. The Robert Young Community Health Center never enrolled any individuals in the Program. In October 2008 Chestnut Health Systems, which had enrolled 129 individuals in the Program since 2003, withdrew as an enrollment site because DHS had cut its funding in other areas.

Mental health providers and other organizations who act as enrollment sites for the Program have not and do not receive any funding or compensation from the IGB for their services. Those organizations in Illinois and Iowa that act as enrollment sites do so as a service to their communities.

Other organizations have contacted the IGB over the years and have volunteered to act as enrollment sites. Those organizations include the Illinois Institute for Addiction Recovery at both Proctor Hospital in Peoria and the BroMenn Regional Health Center in Bloomington. On April 2, 2009 an additional Illinois Institute for Addiction Recovery site began enrolling applicants at Ingalls Memorial Hospital in Harvey. The Ingalls Hospital location is open 24-hours.

The Illinois Institute for Addiction Recovery at Bromenn and at Proctor hospitals have been the busiest non-IGB, non-DHS designated enrollment sites. A total of 124 persons have enrolled at those locations since Program inception.

In April 2005 one of the organizations that had previously volunteered to act as an enrollment site, Hope for Tomorrow in Aurora, voluntarily withdrew from the Program. During the time that it acted as an enrollment site, Hope for Tomorrow did not sign up any individuals for the IGB Self-Exclusion Program. Also In 2006 another non-DHS enrollment site, Klestinski & Associates in Gurnee, was no longer designated as a participant in the Program. A total of seven persons have enrolled in the Program at Klestinski and Associates.

In November 2004 the Program opened its first enrollment site in a jurisdiction outside of Illinois. The Eastern Iowa Center for Problem Gambling in Davenport, Iowa was solicited and volunteered to act as an enrollment site after it had contacted Staff. On December 20, 2004 the Eastern Iowa Center for Problem Gambling became an enrollment site for the IGB Program. In April 2006 an agency associated with the Eastern Iowa Center for Problem Gambling, Anchorpoint Counseling in Cedar Rapids, IA also began enrolling participants in the Program. In August, 2008, the Eastern Iowa Center for Problem Gambling and Anchorpoint Counseling were

closed because they did not receive renewal funding from the Iowa Department of Public Health. While they served as enrollment sites from December 2004 to July 2008 they enrolled a total of 121 persons in the IGB Self-Exclusion Program.

Starting in July, 2008 two more Iowa enrollment sites began enrolling applicants in the Program. In June 2008 a representative of Substance Abuse Services Center (SASC) contacted the Program Director and volunteered to act as an IGB enrollment site at their offices in Dubuque and Manchester, IA. SASC is licensed as a gambling treatment center by the Iowa Department of Public Health. To date SASC has enrolled one person in the Program.

In mid January 2009 three new enrollment sites were added to the Program. Problem gamblers can now enroll in Self-Exclusion at the ADDS Treatment Centers in Davenport, Burlington and Ottumwa Iowa. The IGB now has five enrollment sites in Iowa. The ADDS Treatment Centers are licensed as a gambling treatment center by the Iowa Department of Public Health. To dates the ADDS Treatment Centers have enrolled seven persons in the Program.

Violations of the Self-Exclusion Program

Persons who enroll in the Self-Exclusion Program must designate one of three organizations that they want any chips, tokens or gambling proceeds donated should they return to a casino. These chips, tokens and gambling proceeds are confiscated from their person by casino security. The recipient organizations for these donations include the Outreach Foundation, the Illinois Council on Problem Gambling and the Illinois Institute for Addiction Recovery. Since its inception, there have been a total of 1,738 incidents in which Self-Excluded Person returned to a casino to gamble. Of those incidents, 634 have resulted in donations. To date there have been 1,134 arrests on charges of trespassing for violating the Program.

The largest amount of money donated to date occurred in December 2006 when \$22,800 was donated from an IGB Self-Excluded Person discovered at the Grand Victoria Casino. The least amount donated was .01-cent which was first donated in January 2007 also at the Grand Victoria Casino. As of August 2009 a total of \$717,342.60 has been donated. Some participants opted to have taxes paid at the time of donation. To date a total of \$699,326.56 has been contributed to the organizations after taxes were paid on some of the donations. The donations break down as follows:

Outreach Foundation:	\$255,546.78
Illinois Council on Problem Gambling:	\$261,913.19
Illinois Institute for Addiction Recovery:	\$181,866.59

In March 2009 IGB staff requested financial information from the Outreach Foundation of Illinois, the Illinois Council on Problem Gambling and the Illinois Institute for Addiction Recovery to determine how the funds confiscated and donated by Self-Excluded Persons was being utilized by the organizations to help problem gamblers. At the time this report was submitted the IGB was continuing to review those documents.

Self-Exclusion Program Violations by Casinos

Illinois casinos that violate the Riverboat Gambling Act or the IGB's Rules face disciplinary action if warranted. Since the Program was launched, the Board has issued eight disciplinary complaints related to violations of the Self-Exclusion Program.

On July 26, 2005, the Board issued a Disciplinary Complaint and \$600,000 fine against Empress Casino Joliet for failing to enter information and incorporate the names of 240 IGB Self-Excluded Persons into its in-house computer databases and for mailing promotional material to 23 IGB Self-Excluded Persons. In a settlement with the Board, Empress Casino agreed to pay the fine.

On August 25, 2005, the Board issued a Disciplinary Complaint and \$200,000 fine against Par-A-Dice Casino Corporation for failing to maintain accurately in its own database the IGB Self-Exclusion List between December 1, 2003 and December 23, 2003. This failure allowed an IGB Self-Excluded Person to cash checks totaling \$200 at Par-A-Dice Casino and receives two complimentary passes to the Par-A-Dice food buffet. Par-A-Dice Casino settled with the Board and agreed to pay the fine.

On May 24, 2006, the Board issued a Disciplinary Complaint and \$200,000 fine against Harrah's Casino Joliet for violating several of the Board's Rules. One portion of the complaint alleged that Harrah's Casino Joliet mailed promotional materials to six IGB Self-Exclusion Program participants who had enrolled in the Program. Harrah's paid the fine.

On July 18, 2006, the Board issued a Disciplinary Complaint and \$200,000 fine against Hollywood Casino for failing to maintain accurately in its own database the identities of 38 persons enrolled in the IGB Self-Exclusion Program. The complaint also alleged that a casino employee issued a player's card to an IGB Self-Excluded patron and then gave the patron a free buffet. Hollywood Casino paid the fine.

On August 15, 2006 the Board issued a Disciplinary Complaint and \$100,000 fine against Casino Rock Island (now known as Jumer's) for violating the IGB Self-Exclusion Program Rules on four separate occasions. One incident alleged that Casino Rock Island allowed an IGB Self-Excluded person to cash 14 checks over a three-month period. In another incident, an IGB Self-Excluded person was allowed to obtain a credit card cash advance at the casino. In a third incident Casino Rock Island failed to properly identify a patron as an IGB Self-Excluded Person. In the fourth incident it was determined that Casino Rock Island paid out several jackpots to individuals without attempting to determine if they were IGB Self-Excluded persons. The Casino Rock Island paid the fine.

On April 22, 2008 the Board issued a Disciplinary Complaint and a \$25,000 fine to Par-A-Dice Casino for failing to ensure that self-excluded patron's names were removed from promotional lists. As a result 24 self-excluded persons were mailed promotional materials. In addition, two Par-A-Dice employees were suspended for five days. Par-A-Dice Casino paid the fine.

On May 19, 2008 the Board issued a Disciplinary Complaint to and \$800,000 fine to Hollywood Casino for failing to check a list of customer prospect names to ensure a direct mail vendor did not send promotional material to self-excluded persons. Hollywood's failure resulted in 146 self-excluded patrons receiving promotional materials. In addition, three casino employees were suspended for periods ranging between three and fourteen days. Hollywood Casino paid the fine.

Board Strengthens IGB Self-Exclusion Program

In an effort to fortify the Program, beginning August 15, 2006 Illinois casinos began checking the identification of all persons 30-years-old or younger to prevent those who have enrolled in the IGB's Self-Exclusion Program for Problem Gamblers from gaining access to the casinos.

In addition, Illinois casino industry agreed:

- To seek trespassing charges against all persons who violate the IGB Self-Exclusion Program.

- To increase signage indicating that any IGB self-excluded person found at a casino will be subject to arrest.

- To reward those casino employees who identify IGB Self-Excluded persons attempting to enter or found on the casino floor. Association members pay a \$250 reward for any casino employee who detects a self-excluded person.

Since the Board took action to strengthen the Program there have been 652 incidents of SEPS (self-excluded persons) being discovered when returning to a casino.

Those Self-Excluded persons were detected in the following manner:

ID-Check (casino employees detected the Self-excluded person while scanning ID's):	220
SEP-Bounty (the industry agreed to pay \$250 to employees for each SEP they found):	206
Credit Card: (the SEP was detected because they attempted to use a credit card):	183
Check Cashing: (the SEP was detected because they attempted to cash a check):	55
Gambling (the Self-Excluded patron was detected gambling or winning a jackpot):	153
Other: (the SEP was detected for other reasons):	185

The following table shows a breakdown of the preceding SEP discoveries at each casino:

	Total Incidents	ID-Check	S.E.P. Bounty	Credit Card	Check Cashing	Gamble	Other
Casino Queen	280	55	92	41	16	34	42
Empress	97	37	11	13	5	14	17
Alton	123	24	33	18	7	16	25
Grand Victoria	201	18	41	59	10	33	40
Par-A-Dice	38	16	5	5	2	2	8
Rock Island	60	25	7	6	2	5	15
H.C.A.	134	29	9	29	7	32	28
Harrah's Metro	7	0	4	0	0	1	2
Harrah's Joliet	61	117	4	12	4	16	8

Removal from the Self-Exclusion List

Effective June 14, 2007 the Board published in the Illinois Register the process in which IGB Self-Excluded Persons may request that their name be removed from the Self-Exclusion List. Sections 3000.780 to 3000.790 of the Board's Rules detail how a Self-Excluded Person may request removal from the Program.

A person seeking removal from the IGB Self-Exclusion List may only do so after they have been on the List for a period of five years. After five years a Self-Excluded Person may be removed from the List if they can present to the Administrator proof of the elimination of the mental health or medical condition underlying their acknowledgement that they are a problem gambler and unable to gamble responsibly.

Persons seeking removal from the Self-Exclusion List must present documentation to the Administrator as to the treatment they have received for their gambling problem, including the length of the treatment and the qualifications of the treatment provider. In addition, the Administrator must receive a written recommendation from a licensed physician or mental health provider who is a certified gambling addictions counselor regarding the Self-Excluded person's capacity to participate in gambling without any adverse health and mental health risks.

Should the Administrator determine that a Self-Excluded Person should be removed from the List, the Self-Excluded Person must sign a waiver of liability of the Board its agents and the State of Illinois for any damages that the person may incur with the person's renewal of gambling activities. To date several persons have made formal requests to be removed from the Self-Exclusion List. Those requests were denied because the enrollees failed to meet the requirements for removal from the List.

Self-Exclusion Data Reports

When the application forms were created for the Program a voluntary demographic section was included to capture as much information as possible about the Self-Excluded Persons and their gambling habits. A future goal of this Program is to share that information with an appropriate, independent research facility or university should it be requested. The bulk of this report includes demographic data reports compiled as part of the Program's computer database.

The demographic data shows the most prevalent forms of gambling among self-excluded persons include slot machines; black jack, video poker and playing the lottery. A total of 3,075 persons indicated their favorite form of gambling was slot machines; another 1,539 indicated they favored black jack; a total of 1,190 said they predominantly played video poker and 971 persons said they played the lottery.

The demographic data also shows that the majority of enrollees are Illinois residents, numbering 4,733 persons. In Illinois the City of Chicago had the most residents enroll with 320 persons. Other notable community enrollment figures include Aurora 176; Elgin 185; Joliet 170 and Rock Island 74. A complete listing of Self-Excluded persons by city makes up the last 61 pages of this report.

Many enrolled in the Program are Missouri residents. As of August 2009 a total of 1,579 Missouri residents have enrolled. The majority of the Missouri enrollees, some 744 individuals are from the city of St. Louis. Other states represented include Indiana with 81 and Iowa with 313. The majority of persons self-excluding from Iowa, some 149 persons, are Davenport residents. Sixty residents of Kentucky have enrolled. There are also enrollees from Arizona, Arkansas, Alabama, California, Colorado, Florida, Georgia, Maryland, Michigan, Minnesota, Mississippi, New Jersey, New York, Ohio, Oklahoma, Tennessee, Texas, Wisconsin and Wyoming.

In regards to the age of Self-Excluded persons, the majority of those enrolling in the Program, some 3,660 individuals are between the ages of 45 and 65. A total of 2,181 participants indicated they were between the ages of 31 and 44. There are 540 enrollees between the ages of 21 and 30. The largest portion of enrollees, some 626 persons, indicated they began gambling at the age of 21. Program figures also show that women are enrolling nearly as frequently as men. Women make up roughly 47.7 percent of the enrollments.

The reports show majority of the self-excluded persons who completed the demographic portion of the application individually earn between \$20,000 and \$39,999. The majority of persons enrolling indicate a combined household income exceeds \$75,000 a year. The reports also show the majority of self-excludees, some 1,279 individuals, have taken some college classes. A total of 1,125 persons indicated their highest education level was a high school diploma. Some 781 enrollees indicated they have earned college degrees, another 172 master's degrees; 53 earned their doctorate in law, medicine, dentistry or other disciplines. A total of 93 persons indicated they were registered nurses or pharmacists.

The average one and three year gambling loss for Self-Exclusion participants has varied from year to year. In 2002, the average one-year loss was \$47,556 and three-year loss was reported at \$84,891. In 2003 the average one-year loss was \$23,711 and three-year loss was \$50,042. In 2004 the average one-year loss is \$17,315 and three-year loss is \$27,376. In 2005 the average one-year loss was \$13,392 and three-year loss at \$27,376. In 2006, the average one-year loss was \$14,608 and three-year loss at \$22,791. In 2007 the average one year loss was \$13,418 and three year loss was \$25,862. In the average one year loss at \$9,709 and three year loss at \$17,606. Persons enrolling in 2009 indicate their average gambling loss for one year is \$5,551 and for three years is \$14,770.

Self-reported, gambling-related credit card debt for persons enrolling in the Program has also varied from year to year. In 2002 the average one-year credit card debt was tallied at \$12,505 and three-year debt at \$18,903. In 2003 the one-year figure was \$6,245 and three-year number was \$13,265. In 2004, the one-year figure stands at \$5,024 and three-year figure at \$8,629. Self-reported credit card debt for 2005 has been reported as \$4,371 for one year and \$8,629 for three years. In 2006, the average credit card debt for one year is \$3,746 and \$10,150. In 2007 the average one-year credit card debt was \$2,793 and \$5,315 for three years. In 2008 average one year credit card debt is \$2,380 and three years at \$3,641. In 2009 the data shows the average one year credit card debt is \$1,448 and three year credit card debt is \$3,113.

Illinois Gaming Board
Self-Exclusion Program
SEP by Year

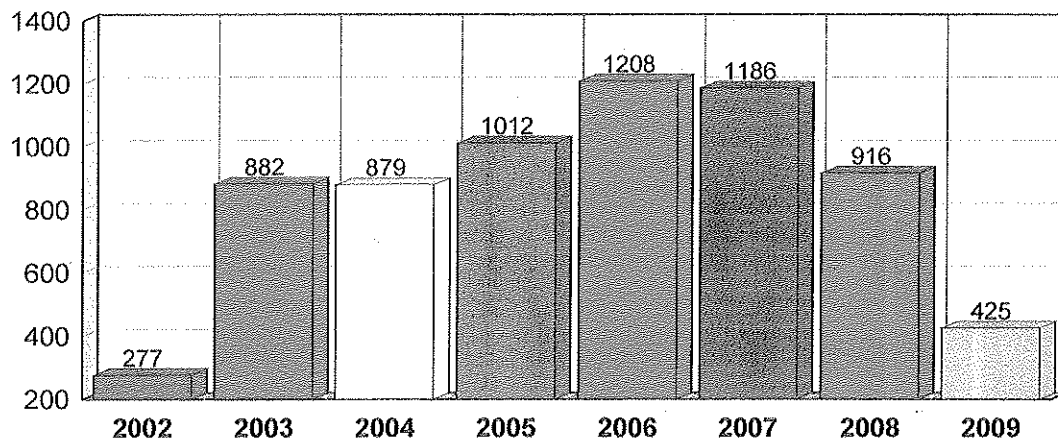
06/29/2009

3:10 pm

Page 1 of 1

Year	Total
2002	277
2003	882
2004	879
2005	1,012
2006	1,208
2007	1,186
2008	916
2009	425
Grand Total:	<u>6,785</u>

Self-Excluded Persons by Year



Application Location	Year	Total
ADDS BURLINGTON	2009	<u>2</u>
		2
ADDS DAVENPORT	2009	<u>4</u>
		4
ALTON BELLE	2002	20
ALTON BELLE	2003	87
ALTON BELLE	2004	83
ALTON BELLE	2005	133
ALTON BELLE	2006	192
ALTON BELLE	2007	208
ALTON BELLE	2008	160
ALTON BELLE	2009	<u>45</u>
		928
ANCHORPOINT COUNSELING	2006	5
ANCHORPOINT COUNSELING	2007	<u>4</u>
		9
AURORA - HOLLYWOOD	2002	7
AURORA - HOLLYWOOD	2003	19
AURORA - HOLLYWOOD	2004	25
AURORA - HOLLYWOOD	2005	47
AURORA - HOLLYWOOD	2006	109
AURORA - HOLLYWOOD	2007	110
AURORA - HOLLYWOOD	2008	75
AURORA - HOLLYWOOD	2009	<u>40</u>
		432
CHESTNUT HEALTH SYSTEMS	2003	35
CHESTNUT HEALTH SYSTEMS	2004	27
CHESTNUT HEALTH SYSTEMS	2005	19
CHESTNUT HEALTH SYSTEMS	2006	15
CHESTNUT HEALTH SYSTEMS	2007	20
CHESTNUT HEALTH SYSTEMS	2008	<u>13</u>
		129
E. PEORIA - PAR-A-DICE	2002	16
E. PEORIA - PAR-A-DICE	2003	25
E. PEORIA - PAR-A-DICE	2004	37
E. PEORIA - PAR-A-DICE	2005	93
E. PEORIA - PAR-A-DICE	2006	65
E. PEORIA - PAR-A-DICE	2007	62
E. PEORIA - PAR-A-DICE	2008	45
E. PEORIA - PAR-A-DICE	2009	<u>30</u>
		373
E. ST. LOUIS - CASINO QUEEN	2002	54
E. ST. LOUIS - CASINO QUEEN	2003	207
E. ST. LOUIS - CASINO QUEEN	2004	168
E. ST. LOUIS - CASINO QUEEN	2005	164
E. ST. LOUIS - CASINO QUEEN	2006	151
E. ST. LOUIS - CASINO QUEEN	2007	162
E. ST. LOUIS - CASINO QUEEN	2008	160

Application Location	Year	Total
E. ST. LOUIS - CASINO QUEEN	2009	<u>87</u>
		1,153
EASTERN IOWA CENTER	2004	1
EASTERN IOWA CENTER	2005	43
EASTERN IOWA CENTER	2006	25
EASTERN IOWA CENTER	2007	25
EASTERN IOWA CENTER	2008	<u>18</u>
		112
ELGIN - GRAND VICTORIA	2002	31
ELGIN - GRAND VICTORIA	2003	118
ELGIN - GRAND VICTORIA	2004	115
ELGIN - GRAND VICTORIA	2005	147
ELGIN - GRAND VICTORIA	2006	218
ELGIN - GRAND VICTORIA	2007	194
ELGIN - GRAND VICTORIA	2008	146
ELGIN - GRAND VICTORIA	2009	<u>77</u>
		1,046
HRDI	2003	3
HRDI	2004	7
HRDI	2005	8
HRDI	2006	4
HRDI	2007	1
HRDI	2008	<u>1</u>
		24
IGB CHICAGO OFFICE	2002	29
IGB CHICAGO OFFICE	2003	28
IGB CHICAGO OFFICE	2004	19
IGB CHICAGO OFFICE	2005	10
IGB CHICAGO OFFICE	2006	19
IGB CHICAGO OFFICE	2007	8
IGB CHICAGO OFFICE	2008	5
IGB CHICAGO OFFICE	2009	<u>5</u>
		123
IGB SPRINGFIELD OFFICE	2002	2
IGB SPRINGFIELD OFFICE	2003	1
IGB SPRINGFIELD OFFICE	2004	3
IGB SPRINGFIELD OFFICE	2005	1
IGB SPRINGFIELD OFFICE	2006	7
IGB SPRINGFIELD OFFICE	2007	3
IGB SPRINGFIELD OFFICE	2008	<u>1</u>
		18
ILLINOIS INSTITUTE BROMMEN	2003	8
ILLINOIS INSTITUTE BROMMEN	2004	8
ILLINOIS INSTITUTE BROMMEN	2005	6
ILLINOIS INSTITUTE BROMMEN	2006	1
ILLINOIS INSTITUTE BROMMEN	2007	3
ILLINOIS INSTITUTE BROMMEN	2008	1
ILLINOIS INSTITUTE BROMMEN	2009	<u>2</u>
		29

Application Location	Year	Total
ILLINOIS INSTITUTE PROCTOR	2003	21
ILLINOIS INSTITUTE PROCTOR	2004	18
ILLINOIS INSTITUTE PROCTOR	2005	11
ILLINOIS INSTITUTE PROCTOR	2006	14
ILLINOIS INSTITUTE PROCTOR	2007	11
ILLINOIS INSTITUTE PROCTOR	2008	9
ILLINOIS INSTITUTE PROCTOR	2009	10
		<hr/> 94
JOLIET - EMPRESS	2002	16
JOLIET - EMPRESS	2003	47
JOLIET - EMPRESS	2004	70
JOLIET - EMPRESS	2005	71
JOLIET - EMPRESS	2006	69
JOLIET - EMPRESS	2007	75
JOLIET - EMPRESS	2008	61
JOLIET - EMPRESS	2009	11
		<hr/> 420
JOLIET - HARRAHS	2002	17
JOLIET - HARRAHS	2003	61
JOLIET - HARRAHS	2004	57
JOLIET - HARRAHS	2005	55
JOLIET - HARRAHS	2006	73
JOLIET - HARRAHS	2007	75
JOLIET - HARRAHS	2008	66
JOLIET - HARRAHS	2009	44
		<hr/> 448
KLESTINSKI & ASSOCIATES	2003	4
KLESTINSKI & ASSOCIATES	2004	3
		<hr/> 7
LORETTO HOSPITAL	2006	2
LORETTO HOSPITAL	2007	1
LORETTO HOSPITAL	2008	1
		<hr/> 4
METROPOLIS - HARRAHS	2002	2
METROPOLIS - HARRAHS	2003	9
METROPOLIS - HARRAHS	2004	7
METROPOLIS - HARRAHS	2005	3
METROPOLIS - HARRAHS	2006	31
METROPOLIS - HARRAHS	2007	33
METROPOLIS - HARRAHS	2008	24
METROPOLIS - HARRAHS	2009	9
		<hr/> 118
NICASA	2002	1
NICASA	2003	1
NICASA	2004	5
NICASA	2005	2
NICASA	2006	3
		<hr/> 12

Application Location	Year	Total
RENZ ADDICTION CENTER	2003	1
RENZ ADDICTION CENTER	2004	5
RENZ ADDICTION CENTER	2005	3
RENZ ADDICTION CENTER	2006	3
RENZ ADDICTION CENTER	2007	8
RENZ ADDICTION CENTER	2008	5
RENZ ADDICTION CENTER	2009	2
		<hr/> 27
ROCK ISLAND - JUMERS	2003	21
ROCK ISLAND - JUMERS	2004	61
ROCK ISLAND - JUMERS	2005	75
ROCK ISLAND - JUMERS	2006	91
ROCK ISLAND - JUMERS	2007	78
ROCK ISLAND - JUMERS	2008	55
ROCK ISLAND - JUMERS	2009	25
		<hr/> 406
SASC MANCHESTER	2009	1
		<hr/> 1
THE FELLOWSHIP HOUSE	2003	3
THE FELLOWSHIP HOUSE	2004	1
THE FELLOWSHIP HOUSE	2006	1
THE FELLOWSHIP HOUSE	2007	4
THE FELLOWSHIP HOUSE	2009	1
		<hr/> 10
THE OUTREACH FOUNDATION OF IL	2002	77
THE OUTREACH FOUNDATION OF IL	2003	134
THE OUTREACH FOUNDATION OF IL	2004	117
THE OUTREACH FOUNDATION OF IL	2005	82
THE OUTREACH FOUNDATION OF IL	2006	78
THE OUTREACH FOUNDATION OF IL	2007	58
THE OUTREACH FOUNDATION OF IL	2008	44
THE OUTREACH FOUNDATION OF IL	2009	23
		<hr/> 613
THE SHARE PROGRAM	2002	4
THE SHARE PROGRAM	2003	49
THE SHARE PROGRAM	2004	38
THE SHARE PROGRAM	2005	30
THE SHARE PROGRAM	2006	27
THE SHARE PROGRAM	2007	36
THE SHARE PROGRAM	2008	24
THE SHARE PROGRAM	2009	3
		<hr/> 211
WAY BACK INN	2002	1
WAY BACK INN	2004	4
WAY BACK INN	2005	9
WAY BACK INN	2006	5
WAY BACK INN	2007	7
WAY BACK INN	2008	2

Application Location
WAY BACK INNYear
2009Total
4

32

Grand Total:

6,785

Month/Year	Total
07/2002	14
08/2002	20
09/2002	22
10/2002	65
11/2002	72
12/2002	84
2002	<u>277</u>
01/2003	78
02/2003	87
03/2003	71
04/2003	84
05/2003	74
06/2003	55
07/2003	70
08/2003	61
09/2003	77
10/2003	68
11/2003	73
12/2003	84
2003	<u>882</u>
01/2004	77
02/2004	96
03/2004	94
04/2004	70
05/2004	61
06/2004	64
07/2004	49
08/2004	65
09/2004	82
10/2004	71
11/2004	77
12/2004	73
2004	<u>879</u>
01/2005	85
02/2005	83
03/2005	86
04/2005	91
05/2005	85
06/2005	62
07/2005	90
08/2005	75
09/2005	74
10/2005	93
11/2005	91
12/2005	97
2005	<u>1,012</u>
01/2006	111
02/2006	104
03/2006	133
04/2006	113
05/2006	97
06/2006	82
07/2006	95
08/2006	94
09/2006	88
10/2006	100
11/2006	97
12/2006	94

Month/Year	Total
2006	1,208
01/2007	109
02/2007	94
03/2007	118
04/2007	105
05/2007	84
06/2007	87
07/2007	89
08/2007	93
09/2007	88
10/2007	110
11/2007	101
12/2007	108
2007	1,186
01/2008	94
02/2008	64
03/2008	106
04/2008	94
05/2008	78
06/2008	63
07/2008	67
08/2008	66
09/2008	77
10/2008	92
11/2008	61
12/2008	54
2008	916
01/2009	71
02/2009	65
03/2009	72
04/2009	64
05/2009	67
06/2009	86
2009	425
Grand Total:	6,785

Illinois Gaming Board
Self-Exclusion Program
Self-Excluded Persons by Age

06/29/2009
3:15 pm
Page 1 of 1

Age Range	Total
Age 21 - 30	535
Age 31 - 44	2,153
Age 45 - 65	3,597
Age Over 65	<u>484</u>
Grand Total:	6,769

Donation Organization	Total
IL COUNCIL ON PROBLEM AND COMPULSIVE GAMBLING	2,519
IL INSTITUTE FOR ADDICTION RECOVERY	1,675
THE OUTREACH FOUNDATION OF IL	2,575
Grand Total:	<u>6,769</u>

Illinois Gaming Board
Self-Exclusion Program
Self-Excluded Persons by Years Gambling at Illinois Casinos

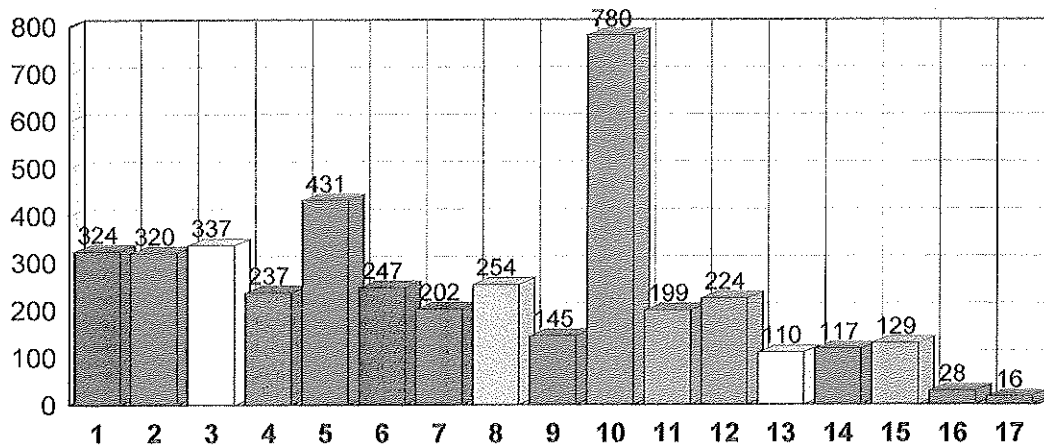
06/29/2009

3:10 pm

Page 1 of 1

Years Gambling	Total
1	324
2	320
3	337
4	237
5	431
6	247
7	202
8	254
9	145
10	780
11	199
12	224
13	110
14	117
15	129
16	28
17	16
Grand Total:	4,100

Self-Excluded Persons by Years Gambling at Illinois Casinos



Illinois Gaming Board
Self-Exclusion Program
SEP by Gender

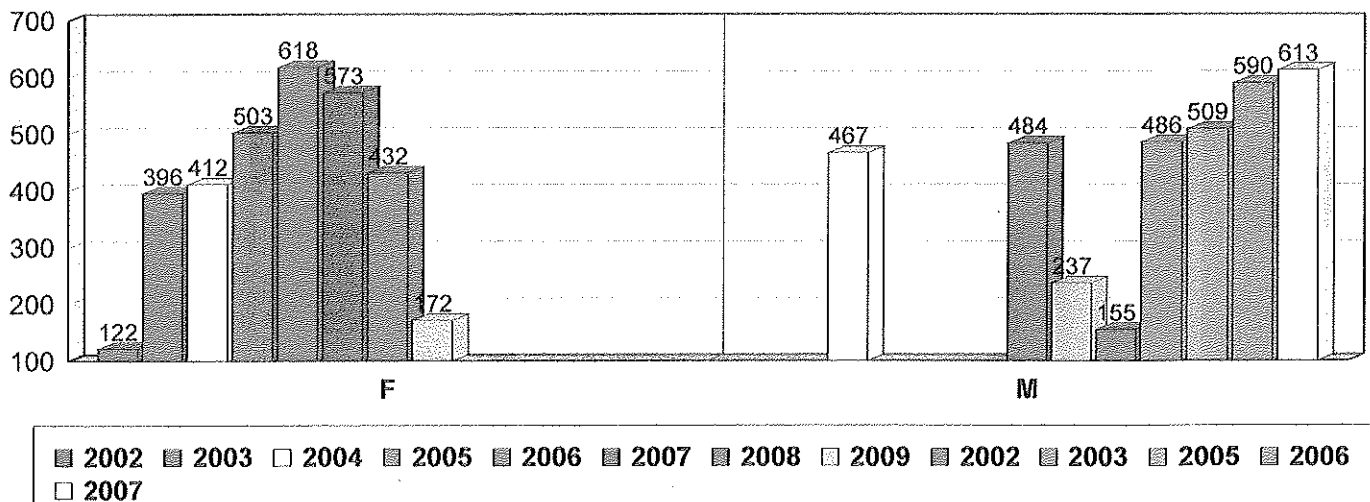
06/29/2009

3:11 pm

Page 1 of 1

Sex	Year	Total
F	2002	122
F	2003	396
F	2004	412
F	2005	503
F	2006	618
F	2007	573
F	2008	432
F	2009	172
		<hr/> 3,228
M	2002	155
M	2003	486
M	2004	467
M	2005	509
M	2006	590
M	2007	613
M	2008	484
M	2009	237
		<hr/> 3,541
Grand Total:		<hr/> 6,769

Self-Excluded Persons by Gender



Illinois Gaming Board
Self-Exclusion Program
Self-Excluded Persons by Gambling Type

<u>Gambling Type</u>	<u>Activity During First 6 Months</u>	<u>Activity During Past 12 Months</u>
Video Poker	1,100	1,190
Baccarat	119	134
Keno	170	166
Other Casino Games	150	164
Stocks	95	102
Street Betting (Dice)	141	65
Lotto	875	971
Other Lottery Games	555	604
Black Jack	1,611	1,533
Roulette	648	680
Pai Gow	83	110
Internet Betting	120	160
Sports Betting	277	210
Big Game	129	163
Other	74	40
Slots	2,975	3,069
Craps	570	595
Bingo	484	309
Card Games	646	523
Horse Racing	421	255

Illinois Gaming Board
Self-Exclusion Program
Self-Excluded Persons by Personal/Household Income

	Personal Income	Household Income
< \$10,000	421	130
\$10,000 - \$19,999	448	133
\$20,000 - \$39,999	1,102	385
\$40,000 - \$49,999	577	332
\$50,000 - \$74,999	721	626
\$75,000 OR MORE	<u>490</u>	<u>1,027</u>
Grand Total:	3,759	2,633

Illinois Gaming Board
Self-Exclusion Program
SEP Range for One Year and Three Year Loss

	One Year Loss	Three Year Loss
Unknown/No Response	3,170	3,282
Up to \$999	149	117
\$1,000 to \$5,000	983	554
\$5,001 to \$10,000	783	432
\$10,001 to \$25,000	752	747
\$25,001 to \$50,000	554	710
\$50,001 to \$75,000	130	275
\$75,001 to \$100,000	147	278
\$100,001 to \$250,000	83	274
\$250,001 to \$500,000	20	79
\$500,001 to \$999,999	8	19
Over \$1,000,000	6	18
Grand Total:	<u>6,785</u>	<u>6,785</u>

Illinois Gaming Board
Self-Exclusion Program
Self-Excluded Persons by Average Loss

06/29/2009

3:26 pm

Page 1 of 1

Application Yr	Average Loss for 1 Yr	Average Loss for 3 Yr
2002	\$47,556.68	\$84,891.34
2003	\$23,711.33	\$50,042.21
2004	\$17,315.22	\$39,219.39
2005	\$13,392.30	\$27,376.25
2006	\$14,608.66	\$22,791.98
2007	\$13,418.54	\$25,862.97
2008	\$8,968.03	\$14,869.12
2009	\$6,615.29	\$17,878.35
Grand Total Average Loss for 1 Yr :		\$15,836.04
Grand Total Average Loss for 3 Yr:		\$30,840.88

Illinois Gaming Board
Self-Exclusion Program
Self-Excluded Persons by Average Credit Card Debt

06/29/2009

3:37 pm

Page 1 of 1

Application Yr	Average Credit Card Debt for 1 Yr	Average Credit Card Debt for 3 Yr
2002	\$12,505.38	\$18,903.75
2003	\$6,245.80	\$13,265.95
2004	\$5,024.43	\$10,566.25
2005	\$4,371.61	\$8,629.26
2006	\$3,746.64	\$10,150.18
2007	\$2,793.30	\$5,315.90
2008	\$1,914.32	\$3,329.67
2009	\$1,659.88	\$3,715.88

Grand Total Average Credit Card Debt for 1 Yr:	\$4,143.12
Grand Total Average Credit Card Debt for 3 Yr:	\$8,570.78

Illinois Gaming Board
Self-Exclusion Program
Self-Excluded Persons by Education

06/29/2009

3:42 pm

Page 1 of 2

Education	Year	Total
COLLEGE GRADUATE	2002	55
COLLEGE GRADUATE	2003	152
COLLEGE GRADUATE	2004	117
COLLEGE GRADUATE	2005	135
COLLEGE GRADUATE	2006	114
COLLEGE GRADUATE	2007	114
COLLEGE GRADUATE	2008	72
COLLEGE GRADUATE	2009	19
		<hr/> 778
GRADE SCHOOL	2002	3
GRADE SCHOOL	2003	6
GRADE SCHOOL	2004	15
GRADE SCHOOL	2005	17
GRADE SCHOOL	2006	13
GRADE SCHOOL	2007	9
GRADE SCHOOL	2008	3
GRADE SCHOOL	2009	1
		<hr/> 67
HIGH SCHOOL	2002	71
HIGH SCHOOL	2003	221
HIGH SCHOOL	2004	174
HIGH SCHOOL	2005	201
HIGH SCHOOL	2006	193
HIGH SCHOOL	2007	158
HIGH SCHOOL	2008	78
HIGH SCHOOL	2009	28
		<hr/> 1,124
MASTER DEGREE	2002	10
MASTER DEGREE	2003	32
MASTER DEGREE	2004	25
MASTER DEGREE	2005	27
MASTER DEGREE	2006	29
MASTER DEGREE	2007	22
MASTER DEGREE	2008	20
MASTER DEGREE	2009	6
		<hr/> 171
PhD, MD, JD, DDS, etc.	2002	5
PhD, MD, JD, DDS, etc.	2003	15
PhD, MD, JD, DDS, etc.	2004	8
PhD, MD, JD, DDS, etc.	2005	8
PhD, MD, JD, DDS, etc.	2006	6
PhD, MD, JD, DDS, etc.	2007	2
PhD, MD, JD, DDS, etc.	2008	7
PhD, MD, JD, DDS, etc.	2009	2
		<hr/> 53
RN, PHARMACIST	2002	4
RN, PHARMACIST	2003	13
RN, PHARMACIST	2004	16
RN, PHARMACIST	2005	22
RN, PHARMACIST	2006	20

Illinois Gaming Board
Self-Exclusion Program
Self-Excluded Persons by Education

06/29/2009

3:42 pm

Page 2 of 2

Education	Year	Total
RN, PHARMACIST	2007	10
RN, PHARMACIST	2008	4
RN, PHARMACIST	2009	4
		<hr/> 93
SOME COLLEGE	2002	95
SOME COLLEGE	2003	241
SOME COLLEGE	2004	197
SOME COLLEGE	2005	249
SOME COLLEGE	2006	196
SOME COLLEGE	2007	164
SOME COLLEGE	2008	92
SOME COLLEGE	2009	40
		<hr/> 1,274
SOME HIGH SCHOOL	2002	8
SOME HIGH SCHOOL	2003	29
SOME HIGH SCHOOL	2004	37
SOME HIGH SCHOOL	2005	32
SOME HIGH SCHOOL	2006	40
SOME HIGH SCHOOL	2007	29
SOME HIGH SCHOOL	2008	12
SOME HIGH SCHOOL	2009	8
		<hr/> 195
TRADE OR TECHNICAL SCHOOL	2002	20
TRADE OR TECHNICAL SCHOOL	2003	46
TRADE OR TECHNICAL SCHOOL	2004	44
TRADE OR TECHNICAL SCHOOL	2005	50
TRADE OR TECHNICAL SCHOOL	2006	50
TRADE OR TECHNICAL SCHOOL	2007	46
TRADE OR TECHNICAL SCHOOL	2008	22
TRADE OR TECHNICAL SCHOOL	2009	4
		<hr/> 282
Grand Total:		<hr/> <hr/> 4,037

Illinois Gaming Board
Self-Exclusion Program
Self-Excluded Persons by Age Began Gambling

06/29/2009

3:14 pm

Page 1 of 2

Age Began Gambling	Total
5	1
6	7
7	16
8	19
9	11
10	33
11	14
12	50
13	31
14	33
15	49
16	75
17	31
18	141
19	36
20	70
21	620
22	78
23	89
24	61
25	153
26	60
27	51
28	75
29	57
30	189
31	57
32	73
33	71
34	63
35	166
36	70
37	62
38	82
39	40
40	188
41	51
42	63
43	59
44	67
45	134
46	61
47	53
48	64
49	36
50	97
51	25
52	36
53	29
54	24
55	33
56	14
57	17
58	15
59	11
60	22
61	10
62	8
63	11

Illinois Gaming Board
Self-Exclusion Program
Self-Excluded Persons by Age Began Gambling

Age Began Gambling	Total
64	6
65	9
66	1
67	3
69	1
70	2
71	2
72	2
73	2
74	1
75	1
76	2
Grand Total:	<u>3,894</u>

Illinois Gaming Board
Self-Exclusion Program
Self-Excluded Persons by Ethnic Origin

06/29/2009
3:07 pm
Page 1 of 2

Ethnic Origin	Year	Total
AFRICAN-AMERICAN/BLACK	2002	25
AFRICAN-AMERICAN/BLACK	2003	115
AFRICAN-AMERICAN/BLACK	2004	130
AFRICAN-AMERICAN/BLACK	2005	157
AFRICAN-AMERICAN/BLACK	2006	218
AFRICAN-AMERICAN/BLACK	2007	166
AFRICAN-AMERICAN/BLACK	2008	195
AFRICAN-AMERICAN/BLACK	2009	78
		<hr/> 1,084
ASIAN/PACIFIC ISLANDER	2002	20
ASIAN/PACIFIC ISLANDER	2003	54
ASIAN/PACIFIC ISLANDER	2004	57
ASIAN/PACIFIC ISLANDER	2005	71
ASIAN/PACIFIC ISLANDER	2006	94
ASIAN/PACIFIC ISLANDER	2007	107
ASIAN/PACIFIC ISLANDER	2008	92
ASIAN/PACIFIC ISLANDER	2009	41
		<hr/> 536
CAUCASIAN/WHITE	2002	228
CAUCASIAN/WHITE	2003	691
CAUCASIAN/WHITE	2004	664
CAUCASIAN/WHITE	2005	732
CAUCASIAN/WHITE	2006	816
CAUCASIAN/WHITE	2007	827
CAUCASIAN/WHITE	2008	579
CAUCASIAN/WHITE	2009	262
		<hr/> 4,799
HISPANIC	2002	4
HISPANIC	2003	19
HISPANIC	2004	19
HISPANIC	2005	36
HISPANIC	2006	63
HISPANIC	2007	62
HISPANIC	2008	35
HISPANIC	2009	19
		<hr/> 257
NATIVE AMERICAN	2005	2

Illinois Gaming Board
Self-Exclusion Program
Self-Excluded Persons by Ethnic Origin

06/29/2009
3:07 pm
Page 2 of 2

Ethnic Origin	Year	Total
NATIVE AMERICAN	2006	2
NATIVE AMERICAN	2007	2
NATIVE AMERICAN	2008	6
		<hr/>
		12
OTHER	2003	3
OTHER	2004	9
OTHER	2005	14
OTHER	2006	15
OTHER	2007	22
OTHER	2008	9
OTHER	2009	9
		<hr/>
		81
		<hr/>
Grand Total:		6,769

Illinois Gaming Board
Self-Exclusion Program
Self-Excluded Persons by State

06/29/2009

3:16 pm

Page 1 of 3

State	Year	Total
AL	2004	1
AL	2007	<u>1</u>
		2
AR	2003	2
AR	2007	<u>2</u>
		4
AZ	2003	2
AZ	2005	1
AZ	2007	<u>1</u>
		4
CA	2003	2
CA	2004	<u>1</u>
		3
CO	2004	1
CO	2005	1
CO	2006	<u>1</u>
		3
FL	2002	1
FL	2003	1
FL	2007	<u>1</u>
		3
GA	2004	<u>1</u>
		1
IA	2003	19
IA	2004	35
IA	2005	66
IA	2006	71
IA	2007	60
IA	2008	37
IA	2009	<u>19</u>
		307
IL	2002	209
IL	2003	580
IL	2004	611
IL	2005	702
IL	2006	852
IL	2007	794
IL	2008	628
IL	2009	<u>287</u>
		4,663
IN	2002	6
IN	2003	15
IN	2004	14
IN	2005	16
IN	2006	7
IN	2007	12

State	Year	Total
IN	2008	5
IN	2009	<u>5</u>
		80
KY	2002	2
KY	2003	7
KY	2004	7
KY	2006	14
KY	2007	14
KY	2008	10
KY	2009	<u>4</u>
		58
MD	2003	<u>1</u>
		1
MI	2003	2
MI	2004	2
MI	2005	1
MI	2006	5
MI	2007	2
MI	2008	3
MI	2009	<u>1</u>
		16
MN	2008	<u>1</u>
		1
MO	2002	59
MO	2003	248
MO	2004	198
MO	2005	214
MO	2006	244
MO	2007	280
MO	2008	223
MO	2009	<u>86</u>
		1,552
MS	2006	<u>1</u>
		1
NC	2005	1
NC	2006	<u>1</u>
		2
NJ	2004	1
NJ	2006	<u>1</u>
		2
NY	2005	1
NY	2009	<u>1</u>
		2
OH	2007	2
OH	2008	<u>1</u>
		3
OK	2005	1
OK	2006	1
OK	2008	<u>1</u>
		3
TN	2003	1

State	Year	Total
TN	2004	1
TN	2006	3
TN	2007	7
TN	2008	3
TN	2009	<u>1</u>
		16
TX	2004	1
TX	2005	1
TX	2006	1
TX	2009	<u>1</u>
		4
WI	2003	2
WI	2004	5
WI	2005	7
WI	2006	6
WI	2007	10
WI	2008	3
WI	2009	<u>4</u>
		37
WY	2008	<u>1</u>
		1
Grand Total:		<u>6,769</u>

Illinois Gaming Board
Self-Exclusion Program
Self-Excluded Persons by City

06/29/2009
4:20 pm
Page 1 of 61

City, State	Year	Total
ABINGDON, IL	2005	<u>1</u>
		1
ADDISON, IL	2002	1
ADDISON, IL	2003	4
ADDISON, IL	2004	3
ADDISON, IL	2005	2
ADDISON, IL	2006	5
ADDISON, IL	2007	5
ADDISON, IL	2008	<u>3</u>
		23
AFFTON, MO	2003	1
AFFTON, MO	2005	1
AFFTON, MO	2006	1
AFFTON, MO	2007	<u>1</u>
		4
ALEDO, IL	2004	2
ALEDO, IL	2006	1
ALEDO, IL	2007	<u>1</u>
		4
ALGONQUIN, IL	2002	1
ALGONQUIN, IL	2003	4
ALGONQUIN, IL	2004	7
ALGONQUIN, IL	2005	2
ALGONQUIN, IL	2007	2
ALGONQUIN, IL	2008	5
ALGONQUIN, IL	2009	<u>1</u>
		22
ALHAMBRA, IL	2008	<u>1</u>
		1
ALMA, AR	2003	<u>1</u>
		1
ALORTON, IL	2006	<u>1</u>
		1
ALPHA, IL	2008	<u>1</u>
		1
ALSIP, IL	2004	3
ALSIP, IL	2006	2
ALSIP, IL	2007	1
ALSIP, IL	2008	<u>2</u>
		8
ALTENBURG, MO	2003	<u>1</u>
		1
ALTON, IL	2003	8
ALTON, IL	2004	4

City, State	Year	Total
ALTON, IL	2005	11
ALTON, IL	2006	12
ALTON, IL	2007	11
ALTON, IL	2008	15
ALTON, IL	2009	5
		<hr/> 66
ANAMOSA, IA	2007	1
		<hr/> 1
ANDALUSIA, IL	2006	1
ANDALUSIA, IL	2007	2
ANDALUSIA, IL	2008	1
		<hr/> 4
ANDERSON, IN	2004	1
		<hr/> 1
ANDOVER, IL	2008	1
		<hr/> 1
ANNA, IL	2006	1
ANNA, IL	2007	2
ANNA, IL	2008	1
		<hr/> 4
ANTIOCH, IL	2002	1
ANTIOCH, IL	2006	1
ANTIOCH, IL	2007	2
		<hr/> 4
APPLE RIVER, IL	2007	1
		<hr/> 1
ARCOLA, IL	2008	1
		<hr/> 1
ARLINGTON HEIGHTS, IL	2002	3
ARLINGTON HEIGHTS, IL	2003	4
ARLINGTON HEIGHTS, IL	2004	7
ARLINGTON HEIGHTS, IL	2005	6
ARLINGTON HEIGHTS, IL	2006	6
ARLINGTON HEIGHTS, IL	2007	6
ARLINGTON HEIGHTS, IL	2008	9
ARLINGTON HEIGHTS, IL	2009	2
		<hr/> 43
ARNOLD, MO	2002	2
ARNOLD, MO	2003	3
ARNOLD, MO	2004	3
ARNOLD, MO	2005	3
ARNOLD, MO	2006	4
ARNOLD, MO	2007	5
ARNOLD, MO	2008	4
ARNOLD, MO	2009	1
		<hr/> 25
ATAUISSA, IA	2005	1
		<hr/> 1
ATHENS, IL	2004	1
		<hr/> 1

City, State	Year	Total
AUBURN, IN	2003	1
AUBURN, IL	2004	1
		<hr/> 2
AUGUSTA, MO	2003	1
		<hr/> 1
AURORA, IL	2002	6
AURORA, IL	2003	14
AURORA, IL	2004	16
AURORA, IL	2005	23
AURORA, IL	2006	46
AURORA, IL	2007	38
AURORA, IL	2008	18
AURORA, IL	2009	11
		<hr/> 172
AVON, IN	2005	2
		<hr/> 2
BALLWIN, MO	2003	2
BALLWIN, MO	2004	4
BALLWIN, MO	2005	2
BALLWIN, MO	2006	8
BALLWIN, MO	2007	3
BALLWIN, MO	2008	2
BALLWIN, MO	2009	2
		<hr/> 23
BARDWELL, KY	2007	1
		<hr/> 1
BARNHART, MO	2003	1
BARNHART, MO	2004	1
BARNHART, MO	2005	1
BARNHART, MO	2007	1
		<hr/> 4
BARRINGTON, IL	2004	1
BARRINGTON, IL	2006	2
BARRINGTON, IL	2007	2
BARRINGTON, IL	2008	1
BARRINGTON, IL	2009	1
		<hr/> 7
BARRINGTON HILLS, IL	2003	1
BARRINGTON HILLS, IL	2005	1
		<hr/> 2
BARTLETT, IL	2002	1
BARTLETT, IL	2003	5
BARTLETT, IL	2004	6
BARTLETT, IL	2005	5
BARTLETT, IL	2006	5
BARTLETT, IL	2007	10
BARTLETT, IL	2008	7
BARTLETT, IL	2009	1
		<hr/> 40
BARTONVILLE, IL	2003	1
BARTONVILLE, IL	2004	1
BARTONVILLE, IL	2005	1
BARTONVILLE, IL	2007	1

City, State	Year	Total
BARTONVILLE, IL	2008	1
BARTONVILLE, IL	2009	<u>1</u>
		6
BATAVIA, IL	2003	3
BATAVIA, IL	2005	3
BATAVIA, IL	2006	3
BATAVIA, IL	2007	3
BATAVIA, IL	2009	<u>1</u>
		13
BAY CITY, MI	2004	<u>1</u>
		1
BEAVERVILLE, IL	2007	<u>1</u>
		1
BEECHER, IL	2009	<u>1</u>
		1
BELLEFONTAINE, MO	2006	1
BELLEFONTAINE, MO	2007	<u>1</u>
		2
BELLEVILLE, IL	2002	6
BELLEVILLE, IL	2003	8
BELLEVILLE, IL	2004	4
BELLEVILLE, IL	2005	13
BELLEVILLE, IL	2006	7
BELLEVILLE, IL	2007	5
BELLEVILLE, IL	2008	8
BELLEVILLE, IL	2009	<u>3</u>
		54
BELLEVUE, IL	2008	<u>2</u>
		2
BELLWOOD, IL	2004	2
BELLWOOD, IL	2005	1
BELLWOOD, IL	2006	1
BELLWOOD, IL	2007	1
BELLWOOD, IL	2008	3
BELLWOOD, IL	2009	<u>1</u>
		9
BELMONT, NC	2006	<u>1</u>
		1
BELOIT, WI	2006	1
BELOIT, WI	2007	<u>2</u>
		3
BELVIDERE, IL	2003	1
BELVIDERE, IL	2004	2
BELVIDERE, IL	2005	1
BELVIDERE, IL	2006	2
BELVIDERE, IL	2008	1
BELVIDERE, IL	2009	<u>1</u>
		8
BENSENVILLE, IL	2003	4
BENSENVILLE, IL	2005	2
BENSENVILLE, IL	2006	1

City, State	Year	Total
BENSENVILLE, IL	2007	2
BENSENVILLE, IL	2008	3
BENSENVILLE, IL	2009	2
		<u>14</u>
BENTON, IL	2006	2
		<u>2</u>
BERKELEY, MO	2007	1
BERKELEY, MO	2008	1
		<u>2</u>
BERKLEY, IL	2004	1
BERKLEY, IL	2007	1
		<u>2</u>
BERWYN, IL	2003	1
BERWYN, IL	2005	4
BERWYN, IL	2006	2
BERWYN, IL	2007	1
BERWYN, IL	2008	1
BERWYN, IL	2009	2
		<u>11</u>
BETHALTO, IL	2003	1
BETHALTO, IL	2004	6
BETHALTO, IL	2005	4
BETHALTO, IL	2006	4
BETHALTO, IL	2007	3
BETHALTO, IL	2008	1
BETHALTO, IL	2009	1
		<u>20</u>
BETTENDORF, IA	2004	3
BETTENDORF, IA	2005	11
BETTENDORF, IA	2006	19
BETTENDORF, IA	2007	6
BETTENDORF, IA	2008	2
BETTENDORF, IA	2009	3
		<u>44</u>
BIG SANDY, TN	2008	1
		<u>1</u>
BIRMINGHAM, MI	2007	1
		<u>1</u>
BLACK JACK, MO	2003	1
BLACK JACK, MO	2004	1
BLACK JACK, MO	2009	1
		<u>3</u>
BLOOMFIELD, IA	2004	1
BLOOMFIELD, MO	2006	1
		<u>2</u>
BLOOMINGDALE, IL	2003	3
BLOOMINGDALE, IL	2004	2
BLOOMINGDALE, IL	2005	2
BLOOMINGDALE, IL	2007	3
BLOOMINGDALE, IL	2008	4
		<u>14</u>

City, State	Year	Total
BLOOMINGTON, IL	2002	1
BLOOMINGTON, IL	2003	4
BLOOMINGTON, IL	2004	4
BLOOMINGTON, IL	2005	5
BLOOMINGTON, IL	2007	4
BLOOMINGTON, IL	2008	2
BLOOMINGTON, IL	2009	3
		<hr/> 23
BLOOMSDALE, MO	2008	2
		<hr/> 2
BLUE GRASS, IA	2005	2
BLUE GRASS, IA	2006	1
		<hr/> 3
BLUE ISLAND, IL	2003	1
BLUE ISLAND, IL	2004	1
BLUE ISLAND, IL	2008	1
		<hr/> 3
BOAZ, KY	2009	1
		<hr/> 1
BOLINGBROOK, IL	2002	1
BOLINGBROOK, IL	2003	4
BOLINGBROOK, IL	2004	2
BOLINGBROOK, IL	2005	5
BOLINGBROOK, IL	2006	8
BOLINGBROOK, IL	2007	5
BOLINGBROOK, IL	2008	5
BOLINGBROOK, IL	2009	1
		<hr/> 31
BONNE TERRE, MO	2005	1
BONNE TERRE, MO	2006	1
		<hr/> 2
BONNIE, IL	2004	1
		<hr/> 1
BOODY, IL	2006	1
		<hr/> 1
BOONVILLE, MO	2004	1
BOONVILLE, MO	2007	1
		<hr/> 2
BOULDER, CO	2005	1
		<hr/> 1
BOURBON, MO	2005	1
		<hr/> 1
BOURBONNAIS, IL	2002	1
BOURBONNAIS, IL	2003	1
BOURBONNAIS, IL	2004	1
BOURBONNAIS, IL	2006	3
BOURBONNAIS, IL	2007	1
BOURBONNAIS, IL	2008	1
		<hr/> 8
BOWLING GREEN, MO	2003	1

City, State	Year	Total
BOWLING GREEN, MO	2004	<u>1</u>
		2
BRADLEY, IL	2005	1
BRADLEY, IL	2007	<u>1</u>
		2
BRAIDWOOD, IL	2003	2
BRAIDWOOD, IL	2004	<u>2</u>
		4
BRECKENRIDGE, MI	2003	<u>2</u>
		2
BRIDGETON, MO	2003	1
BRIDGETON, MO	2004	2
BRIDGETON, MO	2005	2
BRIDGETON, MO	2007	<u>2</u>
		7
BRIDGEVIEW, IL	2002	3
BRIDGEVIEW, IL	2005	1
BRIDGEVIEW, IL	2006	3
BRIDGEVIEW, IL	2007	2
BRIDGEVIEW, IL	2009	<u>1</u>
		10
BRIGHTON, MO	2003	2
BRIGHTON, IL	2004	2
BRIGHTON, IL	2005	2
BRIGHTON, IL	2006	3
BRIGHTON, IL	2007	1
BRIGHTON, IL	2008	4
BRIGHTON, IL	2009	<u>1</u>
		15
BRIMFIELD, IL	2004	1
BRIMFIELD, IL	2007	<u>1</u>
		2
BRISTOL, IL	2005	1
BRISTOL, IL	2007	<u>1</u>
		2
BROADVIEW, IL	2002	1
BROADVIEW, IL	2007	1
BROADVIEW, IL	2009	<u>2</u>
		4
BRONX, NY	2005	<u>1</u>
		1
BROOKFIELD, IL	2002	1
BROOKFIELD, IL	2005	1
BROOKFIELD, MO	2007	<u>1</u>
		3
BROOKLYN, IL	2005	<u>1</u>
		1
BROOKPORT, IL	2006	2
BROOKPORT, IL	2007	<u>1</u>
		3

City, State	Year	Total
BROOKS, KY	2003	<u>1</u>
		1
BROOKSTON, IN	2005	<u>1</u>
		1
BUFFALO, IA	2008	<u>1</u>
		1
BUFFALO GROVE, IL	2002	1
BUFFALO GROVE, IL	2004	5
BUFFALO GROVE, IL	2005	3
BUFFALO GROVE, IL	2006	4
BUFFALO GROVE, IL	2007	1
BUFFALO GROVE, IL	2008	2
BUFFALO GROVE, IL	2009	<u>1</u>
		17
BUNKER HILL, IL	2004	1
BUNKER HILL, IL	2005	2
BUNKER HILL, IL	2007	<u>1</u>
		4
BURBANK, IL	2002	1
BURBANK, CA	2003	1
BURBANK, IL	2006	2
BURBANK, IL	2008	<u>2</u>
		6
BURLINGTON, NJ	2004	2
BURLINGTON, WI	2006	1
BURLINGTON, IA	2007	3
BURLINGTON, IA	2008	1
BURLINGTON, IA	2009	<u>1</u>
		8
BURNHAM, IL	2006	<u>1</u>
		1
BURR RIDGE, IL	2002	1
BURR RIDGE, IL	2003	2
BURR RIDGE, IL	2007	<u>1</u>
		4
BUTLER, IL	2006	<u>2</u>
		2
BYRON, IL	2006	1
BYRON, IL	2008	<u>1</u>
		2
CAHOKIA, IL	2003	2
CAHOKIA, IL	2004	1
CAHOKIA, IL	2005	1
CAHOKIA, IL	2006	2
CAHOKIA, IL	2007	9
CAHOKIA, IL	2008	<u>3</u>
		18
CALEDONIA, IL	2004	<u>1</u>
		1

City, State	Year	Total
CALUMET CITY, IL	2003	2
CALUMET CITY, IL	2004	1
CALUMET CITY, IL	2006	1
CALUMET CITY, IL	2007	<u>1</u>
		5
CALUMET PARK, IL	2003	<u>1</u>
		1
CAMBRIDGE, IL	2006	<u>1</u>
		1
CAMDENTON, MO	2007	<u>1</u>
		1
CANFIELD, OH	2007	<u>1</u>
		1
CANTON, IL	2003	1
CANTON, IL	2005	1
CANTON, IL	2008	<u>1</u>
		3
CAPE GIRARDEAU, MO	2005	1
CAPE GIRARDEAU, MO	2006	1
CAPE GIRARDEAU, MO	2007	<u>1</u>
		3
CARBON CLIFF, IL	2009	<u>1</u>
		1
CARLINVILLE, IL	2004	<u>1</u>
		1
CARLOCK, IL	2005	<u>2</u>
		2
CARLYLE, IL	2008	<u>1</u>
		1
CARMEL, IN	2003	<u>1</u>
		1
CARMI, IL	2009	<u>1</u>
		1
CAROL STREAM, IL	2003	3
CAROL STREAM, IL	2004	5
CAROL STREAM, IL	2005	3
CAROL STREAM, IL	2006	5
CAROL STREAM, IL	2007	9
CAROL STREAM, IL	2008	<u>4</u>
		29
CARPENTERSVILLE, IL	2002	2
CARPENTERSVILLE, IL	2003	4
CARPENTERSVILLE, IL	2004	3
CARPENTERSVILLE, IL	2005	3
CARPENTERSVILLE, IL	2006	5
CARPENTERSVILLE, IL	2007	9
CARPENTERSVILLE, IL	2008	2
CARPENTERSVILLE, IL	2009	<u>2</u>
		30

City, State	Year	Total
CARROLLTON, IL	2005	1
CARROLLTON, IL	2006	2
CARROLLTON, IL	2007	1
		<hr/> 4
CARTERVILLE, IL	2007	1
		<hr/> 1
CARY, IL	2003	3
CARY, IL	2004	1
CARY, IL	2005	3
CARY, IL	2007	4
		<hr/> 11
CASCADE, IA	2004	1
		<hr/> 1
CASEYVILLE, IL	2002	1
CASEYVILLE, IL	2003	1
CASEYVILLE, IL	2005	1
CASEYVILLE, IL	2006	1
CASEYVILLE, IL	2007	4
CASEYVILLE, IL	2008	1
		<hr/> 9
CAZENOVIA, IL	2006	1
		<hr/> 1
CEDAR HILL, MO	2004	1
CEDAR HILL, MO	2006	1
CEDAR HILL, MO	2008	1
		<hr/> 3
CEDAR LAKE, IN	2009	1
		<hr/> 1
CEDAR RAPIDS, IA	2005	1
CEDAR RAPIDS, IA	2006	1
CEDAR RAPIDS, IA	2007	4
CEDAR RAPIDS, IA	2009	3
		<hr/> 9
CEDARBURG, WI	2005	1
		<hr/> 1
CENTRALIA, IL	2008	2
		<hr/> 2
CENTREVILLE, IL	2005	1
CENTREVILLE, IL	2008	1
		<hr/> 2
CHAMPAIGN, IL	2003	1
CHAMPAIGN, IL	2006	1
		<hr/> 2
CHANNAHON, IL	2002	3
CHANNAHON, IL	2003	2
CHANNAHON, IL	2004	1
CHANNAHON, IL	2005	1
CHANNAHON, IL	2006	2
CHANNAHON, IL	2007	4

City, State	Year	Total
CHANNAHON, IL	2008	9
CHANNAHON, IL	2009	<u>1</u>
		23
CHARLOTTE, NC	2005	<u>1</u>
		1
CHATHAM, IL	2008	<u>1</u>
		1
CHEBANSE, IL	2003	<u>1</u>
		1
CHENOA, IL	2004	1
CHENOA, IL	2005	3
CHENOA, IL	2006	<u>1</u>
		5
CHERRY VALLEY, IL	2008	<u>1</u>
		1
CHESTERFIELD, MO	2003	7
CHESTERFIELD, MO	2004	7
CHESTERFIELD, MO	2005	3
CHESTERFIELD, MO	2006	6
CHESTERFIELD, MO	2007	5
CHESTERFIELD, MO	2008	2
CHESTERFIELD, MO	2009	<u>1</u>
		31
CHESTERTON, IN	2002	1
CHESTERTON, IN	2003	1
CHESTERTON, IN	2007	<u>1</u>
		3
CHICAGO, IL	2002	17
CHICAGO, IL	2003	47
CHICAGO, IL	2004	50
CHICAGO, IL	2005	47
CHICAGO, IL	2006	39
CHICAGO, IL	2007	55
CHICAGO, IL	2008	40
CHICAGO, IL	2009	<u>22</u>
		317
CHICAGO HEIGHTS, IL	2003	1
CHICAGO HEIGHTS, IL	2005	1
CHICAGO HEIGHTS, IL	2006	2
CHICAGO HEIGHTS, IL	2007	1
CHICAGO HEIGHTS, IL	2008	<u>1</u>
		6
CHICAGO RIDGE, IL	2003	1
CHICAGO RIDGE, IL	2004	4
CHICAGO RIDGE, IL	2005	1
CHICAGO RIDGE, IL	2006	2
CHICAGO RIDGE, IL	2007	<u>2</u>
		10
CHILLICOTHE, IL	2004	2
CHILLICOTHE, IL	2005	3
CHILLICOTHE, IL	2007	<u>1</u>
		6

City, State	Year	Total
CICERO, IL	2004	2
CICERO, IL	2005	1
CICERO, IL	2007	1
CICERO, IL	2008	<u>1</u>
		5
CLARENDON HILLS, IL	2003	1
CLARENDON HILLS, IL	2005	1
CLARENDON HILLS, IL	2006	2
CLARENDON HILLS, IL	2007	2
CLARENDON HILLS, IL	2009	<u>1</u>
		7
CLARKSVILLE, TN	2006	1
CLARKSVILLE, TN	2007	<u>3</u>
		4
CLAYTON, MO	2007	<u>2</u>
		2
CLEVELAND, IL	2005	<u>1</u>
		1
CLINTON, IA	2003	1
CLINTON, IA	2004	1
CLINTON, IA	2005	4
CLINTON, IA	2006	4
CLINTON, IA	2007	2
CLINTON, IA	2009	<u>1</u>
		13
COAL CITY, IL	2002	1
COAL CITY, IL	2004	1
COAL CITY, IL	2006	<u>1</u>
		3
COAL VALLEY, IL	2004	4
COAL VALLEY, IL	2005	2
COAL VALLEY, IL	2007	<u>2</u>
		8
COLLINSVILLE, IL	2002	1
COLLINSVILLE, IL	2003	5
COLLINSVILLE, IL	2004	5
COLLINSVILLE, IL	2005	5
COLLINSVILLE, IL	2006	6
COLLINSVILLE, IL	2007	4
COLLINSVILLE, IL	2008	6
COLLINSVILLE, IL	2009	<u>3</u>
		35
COLONA, IL	2005	2
COLONA, IL	2006	2
COLONA, IL	2007	<u>3</u>
		7
COLUMBIA, MO	2003	1
COLUMBIA, MO	2004	2
COLUMBIA, MO	2005	1
COLUMBIA, IL	2006	2
COLUMBIA, MO	2007	2
COLUMBIA, MO	2009	<u>1</u>
		9

City, State	Year	Total
COLUMBUS, WI	2005	<u>1</u> 1
COMMERCE TWP, MI	2006	<u>1</u> 1
CORALVILLE, IA	2008	<u>2</u> 2
CORTLAND, IL	2006	1
CORTLAND, IL	2007	<u>2</u> 3
COTTAGE HILLS, IL	2003	1
COTTAGE HILLS, IL	2005	1
COTTAGE HILLS, IL	2007	2
COTTAGE HILLS, IL	2008	<u>1</u> 5
COTTONWOOD, AZ	2005	<u>1</u> 1
COUNTRY CLUB HILLS, IL	2003	1
COUNTRY CLUB HILLS, IL	2004	1
COUNTRY CLUB HILLS, IL	2005	2
COUNTRY CLUB HILLS, IL	2006	1
COUNTRY CLUB HILLS, IL	2007	1
COUNTRY CLUB HILLS, IL	2008	<u>1</u> 7
COUNTRYSIDE, IL	2003	1
COUNTRYSIDE, IL	2008	<u>3</u> 4
CREAL SPRINGS, IL	2006	<u>1</u> 1
CREST HILL, IL	2002	1
CREST HILL, IL	2004	3
CREST HILL, IL	2006	2
CREST HILL, IL	2007	3
CREST HILL, IL	2008	5
CREST HILL, IL	2009	<u>1</u> 15
CRESTON, IL	2008	<u>2</u> 2
CRESTWOOD, IL	2005	1
CRESTWOOD, IL	2006	3
CRESTWOOD, IL	2007	<u>1</u> 5
CRETE, IL	2004	2
CRETE, IL	2005	1
CRETE, IL	2008	<u>2</u> 5
CREVE COEUR, IL	2002	1
CREVE COEUR, MO	2003	2
CREVE COEUR, IL	2004	1
CREVE COEUR, IL	2005	3

City, State	Year	Total
CREVE COEUR, IL	2006	1
CREVE COEUR, IL	2007	1
CREVE COEUR, MO	2008	1
CREVE COEUR, MO	2009	<u>1</u>
		11
CROWN POINT, IN	2003	1
CROWN POINT, IN	2004	1
CROWN POINT, IN	2005	1
CROWN POINT, IN	2007	<u>1</u>
		4
CRYSTAL CITY, MO	2004	1
CRYSTAL CITY, MO	2009	<u>1</u>
		2
CRYSTAL LAKE, IL	2002	1
CRYSTAL LAKE, IL	2003	5
CRYSTAL LAKE, IL	2005	6
CRYSTAL LAKE, IL	2006	3
CRYSTAL LAKE, IL	2007	4
CRYSTAL LAKE, IL	2008	5
CRYSTAL LAKE, IL	2009	<u>1</u>
		25
CUBA, MO	2003	1
CUBA, MO	2006	<u>3</u>
		4
DALLAS CITY, IL	2003	<u>1</u>
		1
DANA, IL	2007	<u>1</u>
		1
DANVERS, IL	2003	1
DANVERS, IL	2004	<u>1</u>
		2
DANVILLE, IL	2005	1
DANVILLE, IL	2006	1
DANVILLE, IL	2007	<u>1</u>
		3
DARIEN, IL	2002	3
DARIEN, IL	2003	1
DARIEN, IL	2004	4
DARIEN, IL	2006	4
DARIEN, IL	2007	3
DARIEN, IL	2008	3
DARIEN, IL	2009	<u>1</u>
		19
DAVENPORT, IA	2003	12
DAVENPORT, IA	2004	20
DAVENPORT, IA	2005	30
DAVENPORT, IA	2006	28
DAVENPORT, IA	2007	25
DAVENPORT, IA	2008	21
DAVENPORT, IA	2009	<u>8</u>
		144
DEARBORN, MI	2005	1

City, State	Year	<u>Total</u>
		1
DECATUR, IL	2002	1
DECATUR, IL	2004	4
DECATUR, IL	2005	1
DECATUR, IL	2007	<u>1</u>
		7
DEERFIELD, IL	2003	2
DEERFIELD, IL	2004	1
DEERFIELD, IL	2006	1
DEERFIELD, IL	2008	<u>1</u>
		5
DEFIANCE, MO	2005	1
DEFIANCE, OH	2008	<u>1</u>
		2
DEKALB, IL	2004	1
DEKALB, IL	2006	4
DEKALB, IL	2007	1
DEKALB, IL	2008	2
DEKALB, IL	2009	<u>1</u>
		9
DELAND, FL	2007	<u>1</u>
		1
DELAVAN, IL	2004	1
DELAVAN, WI	2006	1
DELAVAN, WI	2007	<u>1</u>
		3
DELLWOOD, MO	2003	1
DELLWOOD, MO	2008	<u>1</u>
		2
DES MOINES, IA	2005	1
DES MOINES, IA	2007	<u>2</u>
		3
DES PERES, MO	2007	<u>1</u>
		1
DES PLAINES, IL	2003	4
DES PLAINES, IL	2004	1
DES PLAINES, IL	2005	2
DES PLAINES, IL	2006	9
DES PLAINES, IL	2007	7
DES PLAINES, IL	2008	5
DES PLAINES, IL	2009	<u>4</u>
		32
DESLOGE, MO	2004	1
DESLOGE, MO	2007	2
DESLOGE, MO	2009	<u>1</u>
		4
DESOTO, MO	2003	1
DESOTO, MO	2004	2
DESOTO, IL	2006	<u>1</u>
		4

City, State	Year	Total
DEWITT, IA	2004	1
DEWITT, IA	2006	<u>2</u>
		3
DITTMER, MO	2003	1
DITTMER, MO	2009	<u>1</u>
		2
DOLTON, IL	2003	2
DOLTON, IL	2004	1
DOLTON, IL	2007	1
DOLTON, IL	2009	<u>1</u>
		5
DONAHUE, IA	2007	<u>1</u>
		1
DOWAGIAC, MI	2008	<u>1</u>
		1
DOWNERS GROVE, IL	2002	4
DOWNERS GROVE, IL	2003	5
DOWNERS GROVE, IL	2004	9
DOWNERS GROVE, IL	2005	1
DOWNERS GROVE, IL	2006	4
DOWNERS GROVE, IL	2007	2
DOWNERS GROVE, IL	2008	3
DOWNERS GROVE, IL	2009	<u>1</u>
		29
DUBUQUE, IA	2003	4
DUBUQUE, IA	2004	2
DUBUQUE, IA	2006	2
DUBUQUE, IA	2007	<u>3</u>
		11
DUNDEE, IL	2006	1
DUNDEE, IL	2008	<u>2</u>
		3
DUNLAP, IL	2004	1
DUNLAP, IL	2005	1
DUNLAP, IL	2006	2
DUNLAP, IL	2007	1
DUNLAP, IL	2009	<u>2</u>
		7
DUPO, IL	2002	1
DUPO, IL	2004	1
DUPO, IL	2005	2
DUPO, IL	2007	1
DUPO, IL	2009	<u>1</u>
		6
DUQUOIN, IL	2007	1
DUQUOIN, IL	2008	<u>1</u>
		2
DWIGHT, IL	2003	1
DWIGHT, IL	2006	<u>1</u>
		2
DYER, IN	2006	1

City, State	Year	Total
DYER, IN	2007	1
DYER, IN	2008	<u>1</u>
		3
EARLVILLE, IL	2006	<u>1</u>
		1
EAST ALTON, IL	2002	1
EAST ALTON, IL	2004	2
EAST ALTON, IL	2005	1
EAST ALTON, IL	2006	4
EAST ALTON, IL	2007	2
EAST ALTON, IL	2009	<u>1</u>
		11
EAST CARONDELET, IL	2005	1
EAST CARONDELET, IL	2006	<u>1</u>
		2
EAST CHICAGO, IN	2004	<u>1</u>
		1
EAST DUNDEE, IL	2005	1
EAST DUNDEE, IL	2007	<u>1</u>
		2
EAST MOLINE, IL	2002	1
EAST MOLINE, IL	2003	1
EAST MOLINE, IL	2004	1
EAST MOLINE, IL	2005	6
EAST MOLINE, IL	2006	8
EAST MOLINE, IL	2007	5
EAST MOLINE, IL	2008	4
EAST MOLINE, IL	2009	<u>1</u>
		27
EAST PEORIA, IL	2002	1
EAST PEORIA, IL	2003	1
EAST PEORIA, IL	2004	6
EAST PEORIA, IL	2005	6
EAST PEORIA, IL	2006	3
EAST PEORIA, IL	2007	4
EAST PEORIA, IL	2008	2
EAST PEORIA, IL	2009	<u>2</u>
		25
EAST PRAIRIE, MO	2003	<u>1</u>
		1
EAST ST LOUIS, IL	2003	3
EAST ST LOUIS, IL	2004	6
EAST ST LOUIS, IL	2005	5
EAST ST LOUIS, IL	2006	5
EAST ST LOUIS, IL	2008	9
EAST ST LOUIS, IL	2009	<u>3</u>
		31
EDWARDS, IL	2002	<u>1</u>
		1
EDWARDSVILLE, IL	2003	3
EDWARDSVILLE, IL	2004	1
EDWARDSVILLE, IL	2005	3

City, State	Year	Total
EDWARDSVILLE, IL	2006	4
EDWARDSVILLE, IL	2007	3
EDWARDSVILLE, IL	2008	5
		<hr/> 19
EFFINGHAM, IL	2004	1
		<hr/> 1
EL PASO, IL	2002	1
EL PASO, IL	2003	1
EL PASO, IL	2007	1
EL PASO, IL	2009	2
		<hr/> 5
ELBURN, IL	2003	1
ELBURN, IL	2005	1
		<hr/> 2
ELDRIDGE, IA	2003	1
ELDRIDGE, IA	2004	1
ELDRIDGE, IA	2005	1
ELDRIDGE, IA	2008	1
		<hr/> 4
ELGIN, IL	2002	5
ELGIN, IL	2003	23
ELGIN, IL	2004	11
ELGIN, IL	2005	26
ELGIN, IL	2006	43
ELGIN, IL	2007	38
ELGIN, IL	2008	20
ELGIN, IL	2009	18
		<hr/> 184
ELK GROVE, IL	2002	1
ELK GROVE, IL	2003	6
ELK GROVE, IL	2004	3
ELK GROVE, IL	2005	3
ELK GROVE, IL	2006	5
ELK GROVE, IL	2007	5
ELK GROVE, IL	2008	4
ELK GROVE, IL	2009	1
		<hr/> 28
ELKHART, IN	2003	1
ELKHART, IN	2006	1
		<hr/> 2
ELKHORN, WI	2006	1
		<hr/> 1
ELKVILLE, IL	2009	1
		<hr/> 1
ELLISVILLE, MO	2003	1
ELLISVILLE, MO	2006	1
ELLISVILLE, MO	2007	2
		<hr/> 4
ELMHURST, IL	2002	2
ELMHURST, IL	2003	3
ELMHURST, IL	2004	2
ELMHURST, IL	2006	6

City, State	Year	Total
ELMHURST, IL	2007	4
ELMHURST, IL	2008	2
ELMHURST, IL	2009	2
		<hr/> 21
ELMWOOD PARK, IL	2003	2
ELMWOOD PARK, IL	2005	2
ELMWOOD PARK, IL	2006	2
ELMWOOD PARK, IL	2007	1
		<hr/> 7
ELSAH, IL	2007	1
		<hr/> 1
ELWOOD, IL	2006	1
ELWOOD, IL	2009	1
		<hr/> 2
ELY, IA	2006	1
		<hr/> 1
EOLA, IL	2007	1
		<hr/> 1
EOLIA, MO	2007	1
		<hr/> 1
ERIE, IL	2004	1
		<hr/> 1
EUREKA, MO	2003	2
EUREKA, IL	2005	2
EUREKA, MO	2006	2
EUREKA, MO	2007	2
EUREKA, IL	2008	2
		<hr/> 10
EVANSTON, IL	2003	1
EVANSTON, IL	2005	2
EVANSTON, IL	2006	3
EVANSTON, IL	2007	3
EVANSTON, IL	2008	1
EVANSTON, IL	2009	1
		<hr/> 11
EVANSVILLE, IN	2004	1
EVANSVILLE, IN	2005	1
EVANSVILLE, WI	2007	1
EVANSVILLE, IL	2009	1
		<hr/> 4
EVERGREEN PARK, IL	2004	5
EVERGREEN PARK, IL	2006	1
EVERGREEN PARK, IL	2007	1
EVERGREEN PARK, IL	2008	1
EVERGREEN PARK, IL	2009	1
		<hr/> 9
FAIRMONT CITY, IL	2004	1
FAIRMONT CITY, IL	2006	1
		<hr/> 2
FAIRVIEW, IL	2003	1

City, State	Year	Total
		<u>1</u>
	*	
FAIRVIEW HEIGHTS, IL	2002	1
FAIRVIEW HEIGHTS, IL	2003	4
FAIRVIEW HEIGHTS, IL	2004	2
FAIRVIEW HEIGHTS, IL	2005	3
FAIRVIEW HEIGHTS, IL	2006	1
FAIRVIEW HEIGHTS, IL	2007	2
FAIRVIEW HEIGHTS, IL	2008	1
FAIRVIEW HEIGHTS, IL	2009	<u>1</u>
		15
FARMER CITY, IL	2004	<u>1</u>
		1
FARMINGTON, IL	2005	1
FARMINGTON, MO	2006	1
FARMINGTON, MO	2007	2
FARMINGTON, MO	2008	<u>4</u>
		8
FARMINGTON HEIGHTS, MI	2004	<u>1</u>
		1
FARMINGTON HILLS, MI	2008	<u>1</u>
		1
FAYETTEVILLE, IL	2005	<u>1</u>
		1
FENTON, MO	2003	7
FENTON, MO	2004	3
FENTON, MO	2005	2
FENTON, MO	2006	9
FENTON, MO	2007	2
FENTON, MO	2009	<u>5</u>
		28
FERGUSON, MO	2005	2
FERGUSON, MO	2006	1
FERGUSON, MO	2007	1
FERGUSON, MO	2008	<u>3</u>
		7
FESTUS, MO	2003	1
FESTUS, MO	2005	1
FESTUS, MO	2006	2
FESTUS, MO	2007	4
FESTUS, MO	2008	<u>2</u>
		10
FIELDON, IL	2005	<u>1</u>
		1
FLORISSANT, MO	2002	3
FLORISSANT, MO	2003	20
FLORISSANT, MO	2004	19
FLORISSANT, MO	2005	18
FLORISSANT, MO	2006	16
FLORISSANT, MO	2007	26
FLORISSANT, MO	2008	25
FLORISSANT, MO	2009	<u>6</u>
		133

City, State	Year	Total
FLOSSMOOR, IL	2003	<u>1</u> 1
FONTANA, WI	2004	<u>1</u> 1
FOREST PARK, IL	2002	1
FOREST PARK, IL	2004	1
FOREST PARK, IL	2007	1
FOREST PARK, IL	2009	<u>1</u> 4
FORISTELL, MO	2004	<u>1</u> 1
FORT COLLINS, CO	2004	<u>1</u> 1
FORT MADISON, IA	2003	1
FORT MADISON, IA	2005	<u>1</u> 2
FOX LAKE, IL	2005	1
FOX LAKE, IL	2006	<u>1</u> 2
FOX RIVER GROVE, IL	2003	<u>1</u> 1
FRANKFORT, IL	2003	2
FRANKFORT, IL	2004	2
FRANKFORT, IL	2005	1
FRANKFORT, IL	2007	1
FRANKFORT, IL	2008	<u>2</u> 8
FRANKLIN, IL	2005	1
FRANKLIN, IL	2009	<u>1</u> 2
FRANKLIN PARK, IL	2002	2
FRANKLIN PARK, IL	2003	2
FRANKLIN PARK, IL	2008	<u>2</u> 6
FREEBURG, IL	2008	<u>1</u> 1
FRIDLEY, MN	2008	<u>1</u> 1
FRONTENAC, MO	2004	<u>1</u> 1
FRUITLAND, IA	2008	<u>1</u> 1
FT CAMPBELL, KY	2007	<u>1</u> 1
FT WAYNE, IN	2003	<u>1</u> 1

City, State	Year	Total
FULTON, MO	2005	1
FULTON, IL	2007	<u>2</u>
		3
FULTS, IL	2004	<u>1</u>
		1
GALESBURG, IL	2004	1
GALESBURG, IL	2005	3
GALESBURG, IL	2006	1
GALESBURG, IL	2008	1
GALESBURG, IL	2009	<u>1</u>
		7
GARDNER, IL	2004	2
GARDNER, IL	2006	2
GARDNER, IL	2007	1
GARDNER, IL	2008	<u>1</u>
		6
GARY, IN	2002	1
GARY, IN	2003	1
GARY, IN	2004	3
GARY, IN	2005	1
GARY, IN	2007	1
GARY, IN	2008	<u>1</u>
		8
GENESEO, IL	2004	2
GENESEO, IL	2005	1
GENESEO, IL	2006	1
GENESEO, IL	2008	<u>2</u>
		6
GENEVA, IL	2003	2
GENEVA, IL	2004	1
GENEVA, IL	2005	2
GENEVA, IL	2006	4
GENEVA, IL	2007	2
GENEVA, IL	2008	1
GENEVA, IL	2009	<u>1</u>
		13
GEORGETOWN, IL	2008	<u>1</u>
		1
GERALD, MO	2006	1
GERALD, MO	2007	<u>1</u>
		2
GERMANTOWN, IL	2004	<u>1</u>
		1
GILBERTS, IL	2003	1
GILBERTS, IL	2004	3
GILBERTS, IL	2006	4
GILBERTS, IL	2007	4
GILBERTS, IL	2008	<u>4</u>
		16
GILBERTSVILLE, KY	2003	1
GILBERTSVILLE, KY	2007	<u>1</u>
		2

City, State	Year	Total
GILLESPIE, IL	2008	<u>1</u>
		1
GLASFORD, IL	2006	<u>1</u>
		1
GLEN CARBON, IL	2002	2
GLEN CARBON, IL	2003	1
GLEN CARBON, IL	2004	1
GLEN CARBON, IL	2005	2
GLEN CARBON, IL	2006	7
GLEN CARBON, IL	2007	1
GLEN CARBON, IL	2008	3
GLEN CARBON, IL	2009	<u>1</u>
		18
GLEN ELLYN, IL	2002	2
GLEN ELLYN, IL	2003	2
GLEN ELLYN, IL	2004	2
GLEN ELLYN, IL	2005	4
GLEN ELLYN, IL	2006	4
GLEN ELLYN, IL	2007	3
GLEN ELLYN, IL	2008	2
GLEN ELLYN, IL	2009	<u>3</u>
		22
GLENDAL HEIGHTS, IL	2002	1
GLENDAL HEIGHTS, IL	2003	1
GLENDAL HEIGHTS, IL	2004	3
GLENDAL HEIGHTS, IL	2005	3
GLENDAL HEIGHTS, IL	2006	8
GLENDAL HEIGHTS, IL	2007	2
GLENDAL HEIGHTS, IL	2008	<u>2</u>
		20
GLENVIEW, IL	2003	1
GLENVIEW, IL	2004	1
GLENVIEW, IL	2005	1
GLENVIEW, IL	2006	2
GLENVIEW, IL	2008	3
GLENVIEW, IL	2009	<u>2</u>
		10
GLENWOOD, IL	2005	1
GLENWOOD, IL	2007	<u>1</u>
		2
GODFREY, IL	2002	1
GODFREY, IL	2003	5
GODFREY, IL	2004	3
GODFREY, IL	2005	7
GODFREY, IL	2006	7
GODFREY, IL	2007	3
GODFREY, IL	2008	3
GODFREY, IL	2009	<u>1</u>
		30
GOLCONDA, IL	2008	<u>1</u>
		1
GRAFTON, IL	2006	<u>1</u>
		1

City, State	Year	Total
GRAND RAPIDS, MI	2009	<u>1</u> 1
GRANDVIEW, MO	2004	<u>1</u> 1
GRANGER, IN	2007	<u>1</u> 1
GRANITE CITY, IL	2003	11
GRANITE CITY, IL	2004	4
GRANITE CITY, IL	2005	8
GRANITE CITY, IL	2006	7
GRANITE CITY, IL	2007	15
GRANITE CITY, IL	2008	<u>3</u> 48
GRANT PARK, IL	2004	<u>1</u> 1
GRANTSBURG, IL	2008	<u>1</u> 1
GRANVILLE, IL	2005	<u>1</u> 1
GRAYSLAKE, IL	2003	1
GRAYSLAKE, IL	2007	1
GRAYSLAKE, IL	2008	<u>1</u> 3
GREEN RIVER, WY	2008	<u>1</u> 1
GREEN VALLEY, IL	2007	1
GREEN VALLEY, IL	2008	<u>1</u> 2
GREENFIELD, IN	2005	1
GREENFIELD, WI	2009	<u>2</u> 3
GREENVILLE, KY	2006	1
GREENVILLE, IL	2007	<u>1</u> 2
GREENWOOD, IN	2006	<u>1</u> 1
GRIDLEY, IL	2007	<u>1</u> 1
GRIFFITH, IN	2002	1
GRIFFITH, IN	2003	1
GRIFFITH, IN	2006	<u>1</u> 3
GROVELAND, IL	2003	<u>1</u> 1
GROVER, MO	2002	1
GROVER, MO	2003	1

City, State	Year	Total
GROVER, MO	2004	<u>1</u>
		3
GURNEE, IL	2002	1
GURNEE, IL	2003	2
GURNEE, IL	2004	2
GURNEE, IL	2005	1
GURNEE, IL	2008	2
GURNEE, IL	2009	<u>2</u>
		10
HAINESVILLE, IL	2002	<u>1</u>
		1
HALES CORNERS, WI	2005	<u>1</u>
		1
HAMEL, IL	2006	<u>1</u>
		1
HAMMOND, IN	2004	3
HAMMOND, IN	2005	2
HAMMOND, IN	2007	<u>2</u>
		7
HAMPSHIRE, IL	2006	1
HAMPSHIRE, IL	2008	1
HAMPSHIRE, IL	2009	<u>1</u>
		3
HANNA CITY, IL	2002	1
HANNA CITY, IL	2005	1
HANNA CITY, IL	2006	<u>1</u>
		3
HANNIBAL, MO	2003	1
HANNIBAL, MO	2006	1
HANNIBAL, MO	2008	<u>1</u>
		3
HANOVER PARK, IL	2002	3
HANOVER PARK, IL	2003	3
HANOVER PARK, IL	2004	2
HANOVER PARK, IL	2005	3
HANOVER PARK, IL	2006	6
HANOVER PARK, IL	2007	1
HANOVER PARK, IL	2008	<u>3</u>
		21
HARDIN, IL	2007	<u>1</u>
		1
HARRISBURG, IL	2007	1
HARRISBURG, IL	2008	<u>1</u>
		2
HARTFORD, IL	2004	<u>1</u>
		1
HARVEY, IL	2004	1
HARVEY, IL	2005	1
HARVEY, IL	2006	<u>1</u>
		3

City, State	Year	Total
HARWOOD HEIGHTS, IL	2004	1
HARWOOD HEIGHTS, IL	2007	1
HARWOOD HEIGHTS, IL	2008	3
		<hr/> 5
HAVANA, IL	2005	1
		<hr/> 1
HAWTHORN WOODS, IL	2003	1
HAWTHORN WOODS, IL	2006	1
		<hr/> 2
HAZEL, KY	2009	1
		<hr/> 1
HAZEL CREST, IL	2003	3
HAZEL CREST, IL	2005	1
		<hr/> 4
HAZELCREST, IL	2008	1
		<hr/> 1
HAZELWOOD, MO	2002	4
HAZELWOOD, MO	2003	1
HAZELWOOD, MO	2004	5
HAZELWOOD, MO	2005	3
HAZELWOOD, MO	2006	2
HAZELWOOD, MO	2007	2
HAZELWOOD, MO	2008	2
HAZELWOOD, MO	2009	1
		<hr/> 20
HEBRON, KY	2007	1
		<hr/> 1
HERMANN, MO	2005	1
HERMANN, MO	2007	1
		<hr/> 2
HEYWORTH, IL	2005	1
		<hr/> 1
HIAWATHA, IA	2006	1
		<hr/> 1
HICKORY HILLS, IL	2003	2
HICKORY HILLS, IL	2005	2
HICKORY HILLS, IL	2006	1
HICKORY HILLS, IL	2007	1
HICKORY HILLS, IL	2008	1
		<hr/> 7
HIGH RIDGE, MO	2003	2
HIGH RIDGE, MO	2005	2
HIGH RIDGE, MO	2006	1
HIGH RIDGE, MO	2007	3
		<hr/> 8
HIGHLAND, IL	2003	2
HIGHLAND, IL	2004	1
HIGHLAND, IL	2006	1
HIGHLAND, IL	2007	2

City, State	Year	Total
HIGHLAND, IL	2009	<u>2</u>
		8
HIGHLAND PARK, IL	2006	<u>3</u>
		3
HILLSBORO, MO	2004	1
HILLSBORO, MO	2006	1
HILLSBORO, MO	2007	<u>2</u>
		4
HILLSDALE, IL	2006	1
HILLSDALE, IL	2008	<u>1</u>
		2
HILLSIDE, IL	2006	<u>1</u>
		1
HINCKLEY, IL	2009	<u>1</u>
		1
HINSDALE, IL	2002	1
HINSDALE, IL	2005	4
HINSDALE, IL	2007	<u>1</u>
		6
HODGKINS, IL	2002	<u>1</u>
		1
HOFFMAN, IL	2006	<u>2</u>
		2
HOFFMAN ESTATES, IL	2003	5
HOFFMAN ESTATES, IL	2004	5
HOFFMAN ESTATES, IL	2005	3
HOFFMAN ESTATES, IL	2006	4
HOFFMAN ESTATES, IL	2007	8
HOFFMAN ESTATES, IL	2008	5
HOFFMAN ESTATES, IL	2009	<u>3</u>
		33
HOLLAND, MI	2003	<u>1</u>
		1
HOMER GLEN, IL	2003	2
HOMER GLEN, IL	2004	3
HOMER GLEN, IL	2005	1
HOMER GLEN, IL	2006	2
HOMER GLEN, IL	2007	3
HOMER GLEN, IL	2008	<u>2</u>
		13
HOMETOWN, IL	2008	<u>1</u>
		1
HOMEWOOD, IL	2003	1
HOMEWOOD, IL	2005	1
HOMEWOOD, IL	2006	<u>2</u>
		4
HOPKINSVILLE, KY	2007	<u>1</u>
		1

City, State	Year	Total
HOT SPRINGS, AR	2003	<u>1</u>
		1
HOUSE SPRINGS, MO	2002	1
HOUSE SPRINGS, MO	2004	2
HOUSE SPRINGS, MO	2006	1
HOUSE SPRINGS, MO	2007	1
HOUSE SPRINGS, MO	2008	<u>1</u>
		6
HOUSTON, TX	2009	<u>1</u>
		1
HUNTLEY, IL	2002	1
HUNTLEY, IL	2005	5
HUNTLEY, IL	2006	4
HUNTLEY, IL	2008	<u>2</u>
		12
HUNTSVILLE, AL	2004	<u>1</u>
		1
IMPERIAL, MO	2003	3
IMPERIAL, MO	2004	3
IMPERIAL, MO	2006	5
IMPERIAL, MO	2007	1
IMPERIAL, MO	2008	2
IMPERIAL, MO	2009	<u>3</u>
		17
INDEPENDENCE, MO	2004	1
INDEPENDENCE, IA	2007	<u>1</u>
		2
INDIAN HEAD PARK, IL	2003	1
INDIAN HEAD PARK, IL	2009	<u>1</u>
		2
INDIANAPOLIS, IN	2003	1
INDIANAPOLIS, IN	2005	1
INDIANAPOLIS, IN	2009	<u>1</u>
		3
INDUSTRY, IL	2003	<u>1</u>
		1
INGLESIDE, IL	2002	<u>2</u>
		2
INVERNESS, IL	2005	1
INVERNESS, IL	2006	1
INVERNESS, IL	2007	<u>2</u>
		4
IOWA CITY, IA	2005	3
IOWA CITY, IA	2006	1
IOWA CITY, IA	2007	2
IOWA CITY, IA	2008	<u>2</u>
		8
ISLAND LAKE, IL	2005	2
ISLAND LAKE, IL	2006	<u>1</u>
		3

City, State	Year	Total
ITASCA, IL	2002	1
ITASCA, IL	2004	2
ITASCA, IL	2005	1
ITASCA, IL	2006	2
ITASCA, IL	2007	7
		<u>13</u>
JACKSON, MO	2007	1
		<u>1</u>
JACKSONVILLE, IL	2006	1
JACKSONVILLE, IL	2007	1
JACKSONVILLE, IL	2009	2
		<u>4</u>
JANESVILLE, WI	2005	2
		<u>2</u>
JASPER, AL	2007	1
		<u>1</u>
JEFFERSON CITY, MO	2003	1
		<u>1</u>
JENNINGS, MO	2005	1
		<u>1</u>
JERSEYVILLE, IL	2003	2
JERSEYVILLE, IL	2004	2
JERSEYVILLE, IL	2005	1
JERSEYVILLE, IL	2006	2
JERSEYVILLE, IL	2007	8
JERSEYVILLE, IL	2008	5
		<u>20</u>
JOHNSTON CITY, IL	2007	1
		<u>1</u>
JOLIET, IL	2002	4
JOLIET, IL	2003	27
JOLIET, IL	2004	25
JOLIET, IL	2005	24
JOLIET, IL	2006	25
JOLIET, IL	2007	27
JOLIET, IL	2008	23
JOLIET, IL	2009	13
		<u>168</u>
JONESBORO, IL	2007	1
		<u>1</u>
JONESBURG, MO	2002	1
		<u>1</u>
JUSTICE, IL	2003	1
JUSTICE, IL	2004	1
JUSTICE, IL	2005	1
JUSTICE, IL	2006	1
JUSTICE, IL	2007	1
JUSTICE, IL	2009	1
		<u>6</u>

City, State	Year	Total
KANE, IL	2006	<u>1</u>
		1
KANKAKEE, IL	2003	2
KANKAKEE, IL	2004	2
KANKAKEE, IL	2006	<u>3</u>
		7
KANSAS CITY, MO	2003	1
KANSAS CITY, MO	2006	1
KANSAS CITY, MO	2008	<u>1</u>
		3
KEMPTON, IL	2004	<u>1</u>
		1
KENOSHA, WI	2004	1
KENOSHA, WI	2008	<u>1</u>
		2
KEVIL, KY	2007	<u>1</u>
		1
KEWANEE, IL	2004	1
KEWANEE, IL	2007	1
KEWANEE, IL	2008	<u>1</u>
		3
KILDEER, IL	2005	<u>1</u>
		1
KINGSTON, IL	2004	1
KINGSTON, IL	2007	<u>1</u>
		2
KINMUNDY, IL	2003	<u>1</u>
		1
KIRKLAND, IL	2007	<u>1</u>
		1
KIRKWOOD, MO	2002	2
KIRKWOOD, MO	2003	1
KIRKWOOD, MO	2004	2
KIRKWOOD, MO	2005	3
KIRKWOOD, MO	2006	1
KIRKWOOD, MO	2008	1
KIRKWOOD, MO	2009	<u>1</u>
		11
KNOXVILLE, IL	2004	<u>1</u>
		1
KUTTAWA, KY	2008	<u>1</u>
		1
LA GRANGE, IL	2004	<u>2</u>
		2
LA GRANGE PARK, IL	2004	1
LA GRANGE PARK, IL	2005	1
LA GRANGE PARK, IL	2006	1
LA GRANGE PARK, IL	2007	1

City, State	Year	<u>Total</u>
		4
LAGRANGE, IL	2006	<u>1</u>
		1
LAKE BARRINGTON, IL	2005	<u>1</u>
		1
LAKE BLUFF, IL	2004	1
LAKE BLUFF, IL	2005	2
LAKE BLUFF, IL	2008	<u>1</u>
		4
LAKE FOREST, IL	2009	<u>2</u>
		2
LAKE GENEVA, WI	2007	1
LAKE GENEVA, WI	2009	<u>1</u>
		2
LAKE IN THE HILLS, IL	2002	1
LAKE IN THE HILLS, IL	2003	3
LAKE IN THE HILLS, IL	2004	1
LAKE IN THE HILLS, IL	2006	4
LAKE IN THE HILLS, IL	2007	<u>2</u>
		11
LAKE OZARK, MO	2005	<u>1</u>
		1
LAKE ST LOUIS, MO	2005	2
LAKE ST LOUIS, MO	2006	1
LAKE ST LOUIS, MO	2007	3
LAKE ST LOUIS, MO	2008	<u>2</u>
		8
LAKE VILLA, IL	2004	1
LAKE VILLA, IL	2008	<u>1</u>
		2
LAKE ZURICH, IL	2003	1
LAKE ZURICH, IL	2004	2
LAKE ZURICH, IL	2005	1
LAKE ZURICH, IL	2006	2
LAKE ZURICH, IL	2007	1
LAKE ZURICH, IL	2008	<u>1</u>
		8
LAKEWOOD, IL	2005	<u>1</u>
		1
LANSING, IL	2003	<u>2</u>
		2
LAPORTE, IN	2009	<u>1</u>
		1
LASALLE, IL	2005	1
LASALLE, IL	2009	<u>1</u>
		2
LAWRENCEBERG, IN	2002	<u>1</u>
		1

City, State	Year	Total
LEADWOOD, MO	2007	<u>1</u> 1
LEAF RIVER, IL	2006	<u>1</u> 1
LEBANON, IL	2003	1
LEBANON, IL	2008	<u>2</u> 3
LECLAIRE, IA	2005	1
LECLAIRE, IA	2008	<u>1</u> 2
LEDBETTER, KY	2004	<u>1</u> 1
LEMONT, IL	2002	4
LEMONT, IL	2003	1
LEMONT, IL	2005	4
LEMONT, IL	2006	3
LEMONT, IL	2007	1
LEMONT, IL	2008	2
LEMONT, IL	2009	<u>1</u> 16
LEXINGTON, KY	2004	<u>1</u> 1
LIBERTYVILLE, IL	2008	<u>1</u> 1
LINCOLN, IL	2003	2
LINCOLN, IL	2004	1
LINCOLN, IL	2005	1
LINCOLN, IL	2006	1
LINCOLN, IL	2007	2
LINCOLN, IL	2009	<u>1</u> 8
LINCOLNSHIRE, IL	2007	<u>1</u> 1
LINCOLNWOOD, IL	2003	3
LINCOLNWOOD, IL	2006	1
LINCOLNWOOD, IL	2007	2
LINCOLNWOOD, IL	2009	<u>2</u> 8
LINDENHURST, IL	2004	1
LINDENHURST, IL	2006	<u>1</u> 2
LISLE, IL	2002	4
LISLE, IL	2003	3
LISLE, IL	2004	4
LISLE, IL	2005	2
LISLE, IL	2006	3
LISLE, IL	2007	1
LISLE, IL	2008	2
LISLE, IL	2009	<u>2</u> 21

City, State	Year	Total
LITCHFIELD, IL	2005	1
LITCHFIELD, IL	2007	2
LITCHFIELD, IL	2009	<u>2</u>
		5
LITTLE ROCK, AR	2007	<u>1</u>
		1
LIVINGSTON, IL	2003	1
LIVINGSTON, IL	2006	<u>1</u>
		2
LOCKPORT, IL	2002	2
LOCKPORT, IL	2003	7
LOCKPORT, IL	2004	9
LOCKPORT, IL	2005	3
LOCKPORT, IL	2006	5
LOCKPORT, IL	2007	5
LOCKPORT, IL	2008	3
LOCKPORT, IL	2009	<u>2</u>
		36
LOMBARD, IL	2002	2
LOMBARD, IL	2003	2
LOMBARD, IL	2004	3
LOMBARD, IL	2006	6
LOMBARD, IL	2007	4
LOMBARD, IL	2008	<u>3</u>
		20
LONEDELL, MO	2007	<u>1</u>
		1
LONG GROVE, IL	2005	<u>1</u>
		1
LOS ANGELES, CA	2003	1
LOS ANGELES, CA	2004	<u>1</u>
		2
LOUISVILLE, KY	2003	<u>1</u>
		1
LOVES PARK, IL	2003	1
LOVES PARK, IL	2004	4
LOVES PARK, IL	2007	1
LOVES PARK, IL	2009	<u>2</u>
		8
LOWDEN, IA	2006	<u>1</u>
		1
LUDINGTON, MI	2006	<u>1</u>
		1
LUDLOW, IL	2002	<u>1</u>
		1
LYONS, IL	2003	1
LYONS, IL	2005	3
LYONS, IL	2007	<u>1</u>
		5

City, State	Year	Total
MACKINAW, IL	2003	<u>1</u>
		1
MACOMB, IL	2003	1
MACOMB, IL	2006	<u>1</u>
		2
MADISON, IL	2003	1
MADISON, WI	2004	1
MADISON, IL	2005	2
MADISON, IL	2006	2
MADISON, IL	2007	5
MADISON, IL	2008	2
MADISON, IL	2009	<u>1</u>
		14
MADISONVILLE, KY	2004	<u>3</u>
		3
MANCHESTER, MO	2003	4
MANCHESTER, MO	2004	3
MANCHESTER, MO	2005	1
MANCHESTER, MO	2006	2
MANCHESTER, MO	2007	1
MANCHESTER, MO	2008	<u>1</u>
		12
MANFIELD, IL	2009	<u>1</u>
		1
MANHATTAN, IL	2002	1
MANHATTAN, IL	2003	1
MANHATTAN, IL	2005	2
MANHATTAN, IL	2006	<u>4</u>
		8
MANITO, IL	2007	<u>1</u>
		1
MANTENO, IL	2002	1
MANTENO, IL	2003	1
MANTENO, IL	2006	<u>1</u>
		3
MAPLE PARK, IL	2002	1
MAPLE PARK, IL	2003	<u>1</u>
		2
MAPLETON, IL	2004	1
MAPLETON, IL	2008	1
MAPLETON, IL	2009	<u>1</u>
		3
MAPLEWOOD, MO	2004	<u>1</u>
		1
MAQUOKETA, IA	2005	<u>1</u>
		1
MARENGO, IL	2003	1
MARENGO, IL	2004	2
MARENGO, IL	2007	4
MARENGO, IL	2008	2

City, State	Year	<u>Total</u>
		9
MARINE, IL	2003	1
MARINE, IL	2004	<u>1</u>
		2
MARION, IL	2003	2
MARION, KY	2004	3
MARION, IA	2005	1
MARION, IL	2006	3
MARION, IA	2007	2
MARION, IL	2008	3
MARION, IA	2009	<u>1</u>
		15
MARIONVILLE, MO	2009	<u>1</u>
		1
MARKHAM, IL	2003	1
MARKHAM, IL	2004	<u>1</u>
		2
MARQUETTE HEIGHTS, IL	2005	1
MARQUETTE HEIGHTS, IL	2008	3
MARQUETTE HEIGHTS, IL	2009	<u>1</u>
		5
MARSEILLES, IL	2004	2
MARSEILLES, IL	2005	2
MARSEILLES, IL	2006	2
MARSEILLES, IL	2009	<u>1</u>
		7
MARYLAND HEIGHTS, MO	2002	1
MARYLAND HEIGHTS, MO	2003	2
MARYLAND HEIGHTS, MO	2004	3
MARYLAND HEIGHTS, MO	2005	4
MARYLAND HEIGHTS, MO	2006	4
MARYLAND HEIGHTS, MO	2007	3
MARYLAND HEIGHTS, MO	2008	<u>3</u>
		20
MARYVILLE, IL	2003	1
MARYVILLE, IL	2005	1
MARYVILLE, IL	2006	1
MARYVILLE, IL	2007	1
MARYVILLE, IL	2008	<u>4</u>
		8
MASCOUTAH, IL	2003	1
MASCOUTAH, IL	2004	1
MASCOUTAH, IL	2008	<u>1</u>
		3
MATTESON, IL	2005	2
MATTESON, IL	2007	1
MATTESON, IL	2008	2
MATTESON, IL	2009	<u>1</u>
		6
MAYFIELD, KY	2006	2
MAYFIELD, KY	2007	1
MAYFIELD, KY	2009	1

City, State	Year	<u>Total</u>
		4
MAYWOOD, IL	2002	1
MAYWOOD, IL	2005	1
MAYWOOD, IL	2008	<u>2</u>
		4
MAZON, IL	2006	<u>1</u>
		1
MCCULLOM LAKE, IL	2008	<u>1</u>
		1
MCHENRY, IL	2003	4
MCHENRY, IL	2005	1
MCHENRY, IL	2006	1
MCHENRY, IL	2007	1
MCHENRY, IL	2008	<u>2</u>
		9
MCLEANSBORO, IL	2008	<u>1</u>
		1
MEARS, MI	2006	<u>1</u>
		1
MEDIA, IL	2009	<u>1</u>
		1
MEDINAH, IL	2008	<u>1</u>
		1
MELLVILLE, MO	2002	<u>1</u>
		1
MELROSE PARK, IL	2004	2
MELROSE PARK, IL	2005	2
MELROSE PARK, IL	2007	<u>1</u>
		5
MENDOTA, IL	2008	<u>1</u>
		1
MERRILLVILLE, IN	2003	1
MERRILLVILLE, IN	2004	<u>1</u>
		2
MERRIONETTE PARK, IL	2006	1
MERRIONETTE PARK, IL	2008	<u>1</u>
		2
MESA, AZ	2003	1
MESA, AZ	2007	<u>1</u>
		2
METAMORA, IL	2004	1
METAMORA, IL	2006	5
METAMORA, IL	2009	<u>1</u>
		7
METROPOLIS, IL	2004	3
METROPOLIS, IL	2005	2
METROPOLIS, IL	2006	6

City, State	Year	Total
METROPOLIS, IL	2007	2
METROPOLIS, IL	2008	3
METROPOLIS, IL	2009	<u>1</u>
		17
MEXICO, MO	2003	<u>1</u>
		1
MICHIGAN CITY, IN	2007	<u>1</u>
		1
MIDDLE, IA	2006	<u>1</u>
		1
MIDLOTHIAN, IL	2002	1
MIDLOTHIAN, IL	2007	1
MIDLOTHIAN, IL	2009	<u>1</u>
		3
MILAN, IL	2003	1
MILAN, IL	2004	4
MILAN, IL	2005	5
MILAN, IL	2006	5
MILAN, IL	2007	2
MILAN, IL	2008	<u>1</u>
		18
MILLSTADT, IL	2003	1
MILLSTADT, IL	2004	2
MILLSTADT, IL	2005	<u>1</u>
		4
MILWAUKEE, WI	2006	1
MILWAUKEE, WI	2007	<u>1</u>
		2
MINONK, IL	2008	<u>1</u>
		1
MINOOKA, IL	2002	2
MINOOKA, IL	2003	4
MINOOKA, IL	2004	1
MINOOKA, IL	2006	1
MINOOKA, IL	2007	6
MINOOKA, IL	2008	<u>3</u>
		17
MITCHELL, IL	2004	<u>1</u>
		1
MOKENA, IL	2003	3
MOKENA, IL	2004	3
MOKENA, IL	2005	1
MOKENA, IL	2006	1
MOKENA, IL	2007	3
MOKENA, IL	2008	1
MOKENA, IL	2009	<u>1</u>
		13
MOLINE, IL	2004	2
MOLINE, IL	2005	19
MOLINE, IL	2006	7
MOLINE, IL	2007	15

City, State	Year	Total
MOLINE, IL	2008	9
MOLINE, IL	2009	<u>4</u>
		56
MOMENCE, IL	2003	1
MOMENCE, IL	2006	<u>1</u>
		2
MONEE, IL	2004	1
MONEE, IL	2006	1
MONEE, IL	2007	1
MONEE, IL	2009	<u>1</u>
		4
MONMOUTH, IA	2005	1
MONMOUTH, IL	2009	<u>2</u>
		3
MONTGOMERY, IL	2004	3
MONTGOMERY, IL	2005	3
MONTGOMERY, IL	2006	7
MONTGOMERY, IL	2007	5
MONTGOMERY, IL	2008	<u>2</u>
		20
MORGANFIELD, KY	2006	<u>1</u>
		1
MORO, IL	2006	<u>1</u>
		1
MORRIS, IL	2002	1
MORRIS, IL	2004	6
MORRIS, IL	2005	5
MORRIS, IL	2006	2
MORRIS, IL	2007	4
MORRIS, IL	2008	<u>3</u>
		21
MORRISON, IL	2007	<u>1</u>
		1
MORTON, IL	2002	1
MORTON, IL	2003	3
MORTON, IL	2004	2
MORTON, IL	2006	5
MORTON, IL	2007	3
MORTON, IL	2008	3
MORTON, IL	2009	<u>3</u>
		20
MORTON GROVE, IL	2004	2
MORTON GROVE, IL	2006	2
MORTON GROVE, IL	2007	<u>1</u>
		5
MOSCOW, IA	2007	<u>1</u>
		1
MOSCOW MILLS, MO	2005	<u>1</u>
		1
MOSSVILLE, IL	2006	1

City, State	Year	<u>Total</u>
		1
MOZIER, IL	2006	<u>1</u>
		1
MT CARROLL, IL	2007	<u>2</u>
		2
MT MORRIS, IL	2006	<u>1</u>
		1
MT OLIVE, IL	2006	<u>1</u>
		1
MT PLEASANT, IA	2007	<u>1</u>
		1
MT PROSPECT, IL	2003	1
MT PROSPECT, IL	2004	3
MT PROSPECT, IL	2005	1
MT PROSPECT, IL	2006	6
MT PROSPECT, IL	2007	2
MT PROSPECT, IL	2008	3
MT PROSPECT, IL	2009	<u>1</u>
		17
MT STERLING, IL	2004	<u>1</u>
		1
MT VERNON, IN	2003	2
MT VERNON, IA	2005	1
MT VERNON, IL	2009	<u>1</u>
		4
MT WASHINGTON, KY	2003	<u>2</u>
		2
MUFREESBORO, TN	2004	<u>1</u>
		1
MULBERRY GROVE, IL	2003	<u>1</u>
		1
MUNDELEIN, IL	2002	1
MUNDELEIN, IL	2003	1
MUNDELEIN, IL	2004	1
MUNDELEIN, IL	2007	1
MUNDELEIN, IL	2008	<u>1</u>
		5
MUNSTER, IN	2004	1
MUNSTER, IN	2005	<u>1</u>
		2
MURRAY, KY	2006	1
MURRAY, KY	2007	2
MURRAY, KY	2008	<u>1</u>
		4
MURRAYVILLE, IL	2006	<u>1</u>
		1
MUSCATINE, IA	2004	3

City, State	Year	Total
MUSCATINE, IA	2005	3
MUSCATINE, IA	2007	2
MUSCATINE, IA	2008	2
MUSCATINE, IA	2009	<u>1</u>
		11
NAPERVILLE, IL	2002	9
NAPERVILLE, IL	2003	7
NAPERVILLE, IL	2004	17
NAPERVILLE, IL	2005	13
NAPERVILLE, IL	2006	14
NAPERVILLE, IL	2007	11
NAPERVILLE, IL	2008	5
NAPERVILLE, IL	2009	<u>1</u>
		77
NASHVILLE, TN	2006	1
NASHVILLE, TN	2007	3
NASHVILLE, TN	2008	2
NASHVILLE, TN	2009	<u>1</u>
		7
NEPONSET, IL	2003	<u>1</u>
		1
NEW BADEN, IL	2006	1
NEW BADEN, IL	2007	<u>1</u>
		2
NEW DOUGLAS, IL	2003	<u>1</u>
		1
NEW LENOX, IL	2002	2
NEW LENOX, IL	2003	2
NEW LENOX, IL	2004	5
NEW LENOX, IL	2005	2
NEW LENOX, IL	2006	3
NEW LENOX, IL	2007	3
NEW LENOX, IL	2008	<u>4</u>
		21
NEW WINDSOR, IL	2007	<u>1</u>
		1
NEWARK, IL	2003	1
NEWARK, IL	2005	<u>1</u>
		2
NEWNAN, GA	2004	<u>1</u>
		1
NEWPORT, AR	2007	<u>1</u>
		1
NEWTON, IA	2007	<u>1</u>
		1
NILES, IL	2002	1
NILES, IL	2005	1
NILES, IL	2006	5
NILES, IL	2007	2
NILES, IL	2008	2
NILES, IL	2009	2

City, State	Year	<u>Total</u>
		13
NOBLESVILLE, IN	2006	<u>2</u>
		2
NORMAL, IL	2004	2
NORMAL, IL	2005	2
NORMAL, IL	2006	1
NORMAL, IL	2007	2
NORMAL, IL	2008	2
NORMAL, IL	2009	<u>2</u>
		11
NORRIDGE, IL	2006	1
NORRIDGE, IL	2008	<u>1</u>
		2
NORTH AURORA, IL	2002	2
NORTH AURORA, IL	2003	2
NORTH AURORA, IL	2004	3
NORTH AURORA, IL	2005	2
NORTH AURORA, IL	2006	1
NORTH AURORA, IL	2007	3
NORTH AURORA, IL	2008	4
NORTH AURORA, IL	2009	<u>1</u>
		18
NORTH BARRINGTON, IL	2008	<u>1</u>
		1
NORTH BRUNSWICK, NJ	2006	<u>1</u>
		1
NORTH JUDSON, IN	2007	<u>1</u>
		1
NORTH PEKIN, IL	2009	<u>1</u>
		1
NORTH POINT, FL	2003	<u>1</u>
		1
NORTHBROOK, IL	2003	2
NORTHBROOK, IL	2005	2
NORTHBROOK, IL	2007	2
NORTHBROOK, IL	2009	<u>1</u>
		7
NORTHGLENN, CO	2006	<u>1</u>
		1
NORTHLAKE, IL	2006	1
NORTHLAKE, IL	2007	2
NORTHLAKE, IL	2008	<u>1</u>
		4
NORWOOD PARK, IL	2006	<u>1</u>
		1
OAK BROOK, IL	2006	<u>1</u>
		1
OAK BROOK TERRACE, IL	2008	1

City, State	Year	<u>Total</u>
		1
OAK CREEK, WI	2007	<u>2</u>
		2
OAK FOREST, IL	2004	4
OAK FOREST, IL	2005	2
OAK FOREST, IL	2006	3
OAK FOREST, IL	2008	<u>4</u>
		13
OAK LAWN, IL	2002	1
OAK LAWN, IL	2003	1
OAK LAWN, IL	2004	7
OAK LAWN, IL	2005	3
OAK LAWN, IL	2006	6
OAK LAWN, IL	2007	3
OAK LAWN, IL	2008	<u>2</u>
		23
OAK PARK, IL	2002	1
OAK PARK, IL	2005	1
OAK PARK, IL	2006	2
OAK PARK, IL	2007	1
OAK PARK, IL	2009	<u>1</u>
		6
OAKBROOK, IL	2002	1
OAKBROOK, IL	2005	1
OAKBROOK, IL	2006	<u>1</u>
		3
OAKBROOK TERRACE, IL	2005	<u>1</u>
		1
OAKVILLE, MO	2004	<u>1</u>
		1
O'FALLON, MO	2002	2
O'FALLON, IL	2003	9
O'FALLON, MO	2004	12
O'FALLON, MO	2005	8
O'FALLON, MO	2006	12
O'FALLON, MO	2007	12
O'FALLON, MO	2008	12
O'FALLON, MO	2009	<u>3</u>
		70
OGDEN, IL	2009	<u>1</u>
		1
OKAWVILLE, IL	2004	<u>1</u>
		1
OKLAHOMA CITY, OK	2008	<u>1</u>
		1
OLD MONROE, MO	2008	<u>1</u>
		1
ONARGA, IL	2007	<u>1</u>
		1

City, State	Year	Total
OREGON, IL	2008	<u>1</u>
		1
ORION, IL	2006	1
ORION, IL	2007	<u>1</u>
		2
ORLAND HILLS, IL	2003	1
ORLAND HILLS, IL	2007	2
ORLAND HILLS, IL	2008	<u>1</u>
		4
ORLAND PARK, IL	2002	5
ORLAND PARK, IL	2003	9
ORLAND PARK, IL	2004	6
ORLAND PARK, IL	2005	4
ORLAND PARK, IL	2006	5
ORLAND PARK, IL	2007	3
ORLAND PARK, IL	2008	5
ORLAND PARK, IL	2009	<u>1</u>
		38
OSWEGO, IL	2002	2
OSWEGO, IL	2003	3
OSWEGO, IL	2004	1
OSWEGO, IL	2005	3
OSWEGO, IL	2006	2
OSWEGO, IL	2007	5
OSWEGO, IL	2008	2
OSWEGO, IL	2009	<u>2</u>
		20
OTTAWA, IL	2002	1
OTTAWA, IL	2004	1
OTTAWA, IL	2005	3
OTTAWA, IL	2007	<u>3</u>
		8
OTTUMWA, IA	2005	<u>1</u>
		1
OVERLAND, MO	2003	3
OVERLAND, MO	2005	2
OVERLAND, MO	2006	2
OVERLAND, MO	2007	<u>2</u>
		9
OWENSBORO, KY	2006	<u>1</u>
		1
PACIFIC, MO	2002	1
PACIFIC, MO	2003	1
PACIFIC, MO	2004	2
PACIFIC, MO	2005	2
PACIFIC, MO	2007	1
PACIFIC, MO	2009	<u>1</u>
		8
PADUCAH, KY	2002	2
PADUCAH, KY	2003	2
PADUCAH, KY	2006	7
PADUCAH, KY	2007	5
PADUCAH, KY	2008	6

City, State	Year	Total
PADUCAH, KY	2009	<u>1</u>
		23
PALATINE, IL	2002	3
PALATINE, IL	2003	2
PALATINE, IL	2004	5
PALATINE, IL	2005	7
PALATINE, IL	2006	6
PALATINE, IL	2007	6
PALATINE, IL	2008	<u>5</u>
		34
PALM BEACH, FL	2002	<u>1</u>
		1
PALOS HEIGHTS, IL	2003	1
PALOS HEIGHTS, IL	2005	1
PALOS HEIGHTS, IL	2006	1
PALOS HEIGHTS, IL	2007	<u>2</u>
		5
PALOS HILLS, IL	2002	1
PALOS HILLS, IL	2003	3
PALOS HILLS, IL	2004	1
PALOS HILLS, IL	2005	2
PALOS HILLS, IL	2007	2
PALOS HILLS, IL	2008	1
PALOS HILLS, IL	2009	<u>1</u>
		11
PALOS PARK, IL	2002	2
PALOS PARK, IL	2004	1
PALOS PARK, IL	2006	<u>1</u>
		4
PANA, IL	2007	<u>1</u>
		1
PAR HILLS, MO	2005	<u>1</u>
		1
PARK FOREST, IL	2002	1
PARK FOREST, IL	2003	2
PARK FOREST, IL	2004	2
PARK FOREST, IL	2005	3
PARK FOREST, IL	2008	<u>1</u>
		9
PARK RIDGE, IL	2003	1
PARK RIDGE, IL	2004	1
PARK RIDGE, IL	2005	1
PARK RIDGE, IL	2006	3
PARK RIDGE, IL	2007	<u>1</u>
		7
PARKVIEW, IA	2006	<u>1</u>
		1
PEKIN, IL	2003	6
PEKIN, IL	2004	5
PEKIN, IL	2005	11
PEKIN, IL	2006	12
PEKIN, IL	2007	8

City, State	Year	Total
PEKIN, IL	2008	1
PEKIN, IL	2009	<u>1</u>
		44
PEORIA, IL	2002	3
PEORIA, IL	2003	11
PEORIA, IL	2004	9
PEORIA, IL	2005	25
PEORIA, IL	2006	26
PEORIA, IL	2007	16
PEORIA, IL	2008	11
PEORIA, IL	2009	<u>5</u>
		106
PEORIA HEIGHTS, IL	2002	2
PEORIA HEIGHTS, IL	2003	1
PEORIA HEIGHTS, IL	2004	1
PEORIA HEIGHTS, IL	2005	1
PEORIA HEIGHTS, IL	2007	1
PEORIA HEIGHTS, IL	2008	2
PEORIA HEIGHTS, IL	2009	<u>1</u>
		9
PERU, IL	2008	<u>1</u>
		1
PHOENIX, IL	2005	<u>1</u>
		1
PIASA, IL	2005	<u>1</u>
		1
PINGREE GROVE, IL	2007	<u>1</u>
		1
PIPER CITY, IL	2002	1
PIPER CITY, IL	2009	<u>1</u>
		2
PLAIN, WI	2004	<u>1</u>
		1
PLAINFIELD, IL	2002	4
PLAINFIELD, IL	2003	8
PLAINFIELD, IL	2004	7
PLAINFIELD, IL	2005	11
PLAINFIELD, IL	2006	14
PLAINFIELD, IL	2007	15
PLAINFIELD, IL	2008	13
PLAINFIELD, IL	2009	<u>4</u>
		76
PLANO, IL	2003	1
PLANO, IL	2008	<u>2</u>
		3
PLEASANT PLAINS, IL	2008	<u>1</u>
		1
PLEASANT PRAIRIE, WI	2008	<u>2</u>
		2
POCAHONTAS, IL	2008	1

City, State	Year	<u>Total</u>
		<u>1</u>
PONTIAC, IL	2002	1
PONTIAC, IL	2003	2
PONTIAC, IL	2004	1
PONTIAC, IL	2007	<u>1</u>
		5
PONTOON BEACH, IL	2003	1
PONTOON BEACH, IL	2004	3
PONTOON BEACH, IL	2005	<u>2</u>
		6
POPLAR BLUFF, MO	2004	1
POPLAR BLUFF, MO	2008	<u>1</u>
		2
POPLAR GROVE, IL	2005	<u>1</u>
		1
PORTAGE, IN	2006	1
PORTAGE, IN	2007	<u>1</u>
		2
PORTER, IN	2003	<u>1</u>
		1
POTOSI, WI	2005	<u>1</u>
		1
PRAIRIE GROVE, IL	2007	<u>1</u>
		1
PREEMPTION, IL	2004	<u>2</u>
		2
PRINCETON, IA	2005	<u>2</u>
		2
PRINCEVILLE, IL	2005	<u>2</u>
		2
PROSPECT HEIGHTS, IL	2007	<u>2</u>
		2
QUINCY, IL	2003	1
QUINCY, IL	2005	1
QUINCY, IL	2006	1
QUINCY, IL	2007	1
QUINCY, IL	2008	<u>1</u>
		5
RACINE, WI	2005	1
RACINE, WI	2009	<u>1</u>
		2
RANDALLSTOWN, MD	2003	<u>1</u>
		1
RANTOUL, IL	2005	1
RANTOUL, IL	2009	<u>1</u>
		2

City, State	Year	Total
REYNOLDS, IL	2008	<u>1</u>
		1
 RICHMOND, IN	 2008	 <u>1</u>
		1
 RICHTON PARK, IL	 2002	 1
RICHTON PARK, IL	2003	2
RICHTON PARK, IL	2004	2
RICHTON PARK, IL	2005	1
RICHTON PARK, IL	2009	<u>1</u>
		7
 RINGWOOD, IL	 2003	 <u>1</u>
		1
 RIO GRANDE CITY, TX	 2006	 <u>1</u>
		1
 RIVER FOREST, IL	 2008	 <u>1</u>
		1
 RIVER GROVE, IL	 2002	 1
RIVER GROVE, IL	2003	1
RIVER GROVE, IL	2005	4
RIVER GROVE, IL	2006	<u>2</u>
		8
 RIVERDALE, IL	 2006	 1
RIVERDALE, IA	2007	1
RIVERDALE, IL	2008	<u>1</u>
		3
 RIVERGROVE, IL	 2002	 <u>1</u>
		1
 RIVERSIDE, IL	 2006	 1
RIVERSIDE, IL	2007	<u>1</u>
		2
 RIVERTON, IL	 2004	 <u>2</u>
		2
 RIVERVIEW, MO	 2007	 <u>1</u>
		1
 ROACH, MO	 2006	 <u>1</u>
		1
 ROANOKE, IL	 2009	 <u>1</u>
		1
 ROCHELLE, IL	 2007	 1
ROCHELLE, IL	2008	2
ROCHELLE, IL	2009	<u>1</u>
		4
 ROCK FALLS, IL	 2005	 <u>1</u>
		1
 ROCK HILL, MO	 2004	 1
ROCK HILL, MO	2008	1

City, State	Year	<u>Total</u>
		2
ROCK ISLAND, IL	2003	1
ROCK ISLAND, IL	2004	5
ROCK ISLAND, IL	2005	21
ROCK ISLAND, IL	2006	15
ROCK ISLAND, IL	2007	13
ROCK ISLAND, IL	2008	16
ROCK ISLAND, IL	2009	<u>3</u>
		74
ROCKDALE, IL	2007	<u>2</u>
		2
ROCKFORD, IL	2002	1
ROCKFORD, IL	2003	8
ROCKFORD, IL	2004	2
ROCKFORD, IL	2005	4
ROCKFORD, IL	2006	5
ROCKFORD, IL	2007	2
ROCKFORD, IL	2008	7
ROCKFORD, IL	2009	<u>3</u>
		32
ROCKTON, IL	2003	<u>1</u>
		1
ROLLING MEADOWS, IL	2002	1
ROLLING MEADOWS, IL	2003	1
ROLLING MEADOWS, IL	2005	2
ROLLING MEADOWS, IL	2006	4
ROLLING MEADOWS, IL	2007	1
ROLLING MEADOWS, IL	2008	<u>1</u>
		10
ROMEDEVILLE, IL	2002	3
ROMEDEVILLE, IL	2003	7
ROMEDEVILLE, IL	2004	1
ROMEDEVILLE, IL	2005	3
ROMEDEVILLE, IL	2006	13
ROMEDEVILLE, IL	2007	8
ROMEDEVILLE, IL	2008	2
ROMEDEVILLE, IL	2009	<u>3</u>
		40
ROODHOUSE, IL	2003	1
ROODHOUSE, IL	2007	<u>1</u>
		2
ROSCOE, IL	2005	1
ROSCOE, IL	2006	1
ROSCOE, IL	2008	1
ROSCOE, IL	2009	<u>1</u>
		4
ROSELLE, IL	2003	4
ROSELLE, IL	2005	6
ROSELLE, IL	2006	4
ROSELLE, IL	2007	2
ROSELLE, IL	2009	<u>4</u>
		20
ROSEMONT, IL	2006	1

City, State	Year	Total
		<u>1</u>
ROUND LAKE, IL	2004	2
ROUND LAKE, IL	2006	2
ROUND LAKE, IL	2007	1
ROUND LAKE, IL	2008	<u>1</u>
		6
ROUND LAKE BEACH, IL	2003	1
ROUND LAKE BEACH, IL	2004	1
ROUND LAKE BEACH, IL	2005	3
ROUND LAKE BEACH, IL	2007	<u>1</u>
		6
ROUND LAKE HEIGHTS, IL	2006	<u>1</u>
		1
ROUND LAKE PARK, IL	2007	<u>1</u>
		1
ROXANA, IL	2003	1
ROXANA, IL	2008	<u>1</u>
		2
RUSHVILLE, IL	2005	<u>1</u>
		1
SALEM, MO	2005	1
SALEM, IL	2009	<u>1</u>
		2
SANDWICH, IL	2004	2
SANDWICH, IL	2006	1
SANDWICH, IL	2007	<u>2</u>
		5
SANTA FE, MO	2003	<u>1</u>
		1
SAUK VILLAGE, IL	2003	2
SAUK VILLAGE, IL	2006	<u>1</u>
		3
SAVOY, IL	2002	<u>1</u>
		1
SCHAUMBURG, IL	2002	3
SCHAUMBURG, IL	2003	13
SCHAUMBURG, IL	2004	11
SCHAUMBURG, IL	2005	15
SCHAUMBURG, IL	2006	15
SCHAUMBURG, IL	2007	10
SCHAUMBURG, IL	2008	10
SCHAUMBURG, IL	2009	<u>2</u>
		79
SCHERERVILLE, IN	2002	1
SCHERERVILLE, IN	2008	<u>2</u>
		3
SCHILLER PARK, IL	2002	1
SCHILLER PARK, IL	2004	2
SCHILLER PARK, IL	2005	1

City, State	Year	Total
SCHILLER PARK, IL	2006	1
SCHILLER PARK, IL	2008	1
SCHILLER PARK, IL	2009	1
		<hr/>
		7
SENECA, IL	2004	2
SENECA, IL	2007	1
		<hr/>
		3
SHABBONA, IL	2006	1
		<hr/>
		1
SHAWNEETOWN, IL	2006	1
		<hr/>
		1
SHEFFIELD, IL	2004	1
		<hr/>
		1
SHELBYVILLE, IL	2006	1
		<hr/>
		1
SHERIDAN, IL	2007	1
		<hr/>
		1
SHERMAN, IL	2004	1
		<hr/>
		1
SHERRARD, IL	2006	2
		<hr/>
		2
SHILOH, IL	2008	1
		<hr/>
		1
SHOREWOOD, IL	2002	1
SHOREWOOD, IL	2003	1
SHOREWOOD, IL	2004	3
SHOREWOOD, IL	2005	4
SHOREWOOD, IL	2006	1
SHOREWOOD, IL	2007	5
SHOREWOOD, IL	2008	1
SHOREWOOD, IL	2009	1
		<hr/>
		17
SIDNEY, IL	2004	1
		<hr/>
		1
SIKESTON, MO	2007	1
		<hr/>
		1
SILEX, MO	2005	1
SILEX, MO	2007	1
		<hr/>
		2
SILVIS, IL	2004	3
SILVIS, IL	2005	2
SILVIS, IL	2006	2
SILVIS, IL	2007	1
SILVIS, IL	2008	1
		<hr/>
		9
SKOKIE, IL	2003	3
SKOKIE, IL	2004	5
SKOKIE, IL	2006	3

City, State	Year	Total
SKOKIE, IL	2007	4
SKOKIE, IL	2008	1
SKOKIE, IL	2009	3
		<hr/> 19
SLEEPY HOLLOW, IL	2004	2
SLEEPY HOLLOW, IL	2005	3
SLEEPY HOLLOW, IL	2007	2
		<hr/> 7
SOMONAUK, IL	2006	2
		<hr/> 2
SORENTO, IL	2008	2
		<hr/> 2
SOUTH BARRINGTON, IL	2007	1
		<hr/> 1
SOUTH BELOIT, IL	2003	1
SOUTH BELOIT, IL	2005	1
SOUTH BELOIT, IL	2006	1
		<hr/> 3
SOUTH BEND, IN	2004	1
		<hr/> 1
SOUTH CHICAGO HTS., IL	2006	1
		<hr/> 1
SOUTH ELGIN, IL	2003	7
SOUTH ELGIN, IL	2004	4
SOUTH ELGIN, IL	2005	2
SOUTH ELGIN, IL	2006	7
SOUTH ELGIN, IL	2007	7
SOUTH ELGIN, IL	2008	3
SOUTH ELGIN, IL	2009	1
		<hr/> 31
SOUTH HOLLAND, IL	2003	2
SOUTH HOLLAND, IL	2004	2
SOUTH HOLLAND, IL	2005	1
SOUTH HOLLAND, IL	2006	2
		<hr/> 7
SOUTH ROXANNA, IL	2007	1
		<hr/> 1
SPARLAND, IL	2004	1
SPARLAND, IL	2007	1
SPARLAND, IL	2008	1
		<hr/> 3
SPARTA, IL	2003	2
SPARTA, IL	2008	1
		<hr/> 3
SPERRY, IA	2004	1
		<hr/> 1
SPRING GROVE, IL	2004	1
SPRING GROVE, IL	2006	1
		<hr/> 2

City, State	Year	Total
SPRING VALLEY, IL	2005	<u>1</u>
		1
SPRINGFIELD, IL	2002	1
SPRINGFIELD, IL	2003	4
SPRINGFIELD, IL	2004	4
SPRINGFIELD, IL	2005	3
SPRINGFIELD, IL	2006	9
SPRINGFIELD, IL	2007	8
SPRINGFIELD, IL	2008	4
SPRINGFIELD, IL	2009	<u>1</u>
		34
ST ANN, MO	2002	1
ST ANN, MO	2003	2
ST ANN, MO	2005	3
ST ANN, MO	2006	1
ST ANN, MO	2007	4
ST ANN, MO	2008	1
ST ANN, MO	2009	<u>1</u>
		13
ST ANNE, IL	2004	1
ST ANNE, IL	2005	<u>1</u>
		2
ST CHARLES, IL	2002	7
ST CHARLES, IL	2003	24
ST CHARLES, MO	2004	15
ST CHARLES, MO	2005	16
ST CHARLES, IL	2006	24
ST CHARLES, MO	2007	26
ST CHARLES, MO	2008	16
ST CHARLES, MO	2009	<u>7</u>
		135
ST CLAIR, MO	2004	1
ST CLAIR, MO	2005	<u>1</u>
		2
ST ELMO, IL	2005	<u>2</u>
		2
ST GENEVIEVE, MO	2007	<u>1</u>
		1
ST JACOB, IL	2009	<u>1</u>
		1
ST JOHN, MO	2003	3
ST JOHN, MO	2004	1
ST JOHN, IN	2005	1
ST JOHN, MO	2008	<u>1</u>
		6
ST LOUIS, MO	2002	30
ST LOUIS, MO	2003	116
ST LOUIS, MO	2004	87
ST LOUIS, MO	2005	99
ST LOUIS, MO	2006	110
ST LOUIS, MO	2007	129
ST LOUIS, MO	2008	118

City, State	Year	Total
ST LOUIS, MO	2009	<u>42</u>
		731
ST PAUL, MO	2005	<u>1</u>
		1
ST PETERS, MO	2002	4
ST PETERS, MO	2003	11
ST PETERS, MO	2004	4
ST PETERS, MO	2005	6
ST PETERS, MO	2006	7
ST PETERS, MO	2007	8
ST PETERS, MO	2008	7
ST PETERS, MO	2009	<u>3</u>
		50
ST ROBERT, MO	2006	<u>2</u>
		2
STAUNTON, IL	2005	1
STAUNTON, IL	2008	<u>1</u>
		2
STEGER, IL	2003	1
STEGER, IL	2005	<u>1</u>
		2
STERLING, IL	2006	<u>2</u>
		2
STICKNEY, IL	2007	<u>1</u>
		1
STILLWATER, OK	2005	<u>1</u>
		1
STOCKTON, IA	2006	<u>1</u>
		1
STREAMWOOD, IL	2002	1
STREAMWOOD, IL	2003	4
STREAMWOOD, IL	2004	1
STREAMWOOD, IL	2005	7
STREAMWOOD, IL	2006	7
STREAMWOOD, IL	2007	6
STREAMWOOD, IL	2008	4
STREAMWOOD, IL	2009	<u>3</u>
		33
STREATOR, IL	2006	2
STREATOR, IL	2007	1
STREATOR, IL	2008	2
STREATOR, IL	2009	<u>1</u>
		6
STREETSBORO, OH	2007	<u>1</u>
		1
SUGAR GROVE, IL	2003	1
SUGAR GROVE, IL	2006	2
SUGAR GROVE, IL	2008	<u>1</u>
		4

City, State	Year	Total
SULLIVAN, MO	2008	<u>1</u> 1
SUMMIT, IL	2002	1
SUMMIT, IL	2006	<u>1</u> 2
SWANSEA, IL	2003	2
SWANSEA, IL	2004	3
SWANSEA, IL	2005	1
SWANSEA, IL	2007	5
SWANSEA, IL	2008	1
SWANSEA, IL	2009	<u>4</u> 16
SYCAMORE, IL	2003	2
SYCAMORE, IL	2006	1
SYCAMORE, IL	2007	1
SYCAMORE, IL	2008	<u>1</u> 5
TAMMS, IL	2008	<u>2</u> 2
TERRE HAUTE, IN	2004	<u>1</u> 1
THAYER, MO	2006	<u>1</u> 1
THOMPSONVILLE, IL	2006	<u>1</u> 1
THORNTON, IL	2004	<u>1</u> 1
TINLEY PARK, IL	2002	4
TINLEY PARK, IL	2003	5
TINLEY PARK, IL	2004	3
TINLEY PARK, IL	2005	1
TINLEY PARK, IL	2006	6
TINLEY PARK, IL	2007	7
TINLEY PARK, IL	2008	3
TINLEY PARK, IL	2009	<u>5</u> 34
TIPTON, IA	2006	<u>4</u> 4
TODDVILLE, IA	2007	<u>1</u> 1
TOLUCA, IL	2007	<u>2</u> 2
TOWN & COUNTRY, MO	2007	<u>1</u> 1
TRAVERSE CITY, MI	2006	<u>1</u> 1
TREMONT, IL	2005	1
TREMONT, IL	2006	1

City, State	Year	<u>Total</u>
		2
TRENTON, IL	2005	1
TRENTON, IL	2006	1
TRENTON, IL	2007	1
TRENTON, IL	2008	<u>1</u>
		4
TRIVOLI, IL	2002	<u>1</u>
		1
TROY, IL	2003	2
TROY, MO	2005	2
TROY, IL	2006	2
TROY, MO	2007	2
TROY, MO	2008	<u>4</u>
		12
TUCSON, AZ	2003	<u>1</u>
		1
TULSA, OK	2006	<u>1</u>
		1
TUSCOLA, IL	2007	<u>1</u>
		1
TWO RIVERS, WI	2007	<u>1</u>
		1
UNION, MO	2003	1
UNION, MO	2004	1
UNION, MO	2006	2
UNION, MO	2009	<u>1</u>
		5
UNION CITY, TN	2003	<u>1</u>
		1
UNIVERSITY CITY, MO	2003	1
UNIVERSITY CITY, MO	2006	1
UNIVERSITY CITY, MO	2008	<u>1</u>
		3
URBANA, IL	2004	1
URBANA, IL	2005	<u>1</u>
		2
VALLES MINES, MO	2008	<u>1</u>
		1
VALLEY PARK, MO	2005	3
VALLEY PARK, MO	2006	2
VALLEY PARK, MO	2009	<u>1</u>
		6
VALMEYER, IL	2005	<u>1</u>
		1
VALPARAISO, IN	2002	1
VALPARAISO, IN	2005	2
VALPARAISO, IN	2007	<u>1</u>
		4

City, State	Year	Total
VENICE, IL	2008	<u>1</u>
		1
VERNON HILLS, IL	2003	2
VERNON HILLS, IL	2004	1
VERNON HILLS, IL	2006	2
VERNON HILLS, IL	2007	<u>2</u>
		7
VERONA, IL	2006	<u>1</u>
		1
VILLA PARK, IL	2003	3
VILLA PARK, IL	2004	1
VILLA PARK, IL	2005	1
VILLA PARK, IL	2006	2
VILLA PARK, IL	2007	1
VILLA PARK, IL	2008	<u>2</u>
		10
VILLA RIDGE, IL	2007	2
VILLA RIDGE, MO	2008	<u>1</u>
		3
VIOLA, IL	2009	<u>1</u>
		1
WALCOTT, IA	2005	1
WALCOTT, IA	2008	<u>1</u>
		2
WAPELLO, IA	2007	<u>1</u>
		1
WARRENTON, MO	2005	1
WARRENTON, MO	2006	<u>2</u>
		3
WARRENVILLE, IL	2002	1
WARRENVILLE, IL	2005	1
WARRENVILLE, IL	2006	1
WARRENVILLE, IL	2008	2
WARRENVILLE, IL	2009	<u>4</u>
		9
WASHINGTON, MO	2002	1
WASHINGTON, IL	2003	3
WASHINGTON, MO	2004	5
WASHINGTON, IL	2005	10
WASHINGTON, IL	2006	4
WASHINGTON, MO	2007	6
WASHINGTON, IA	2008	2
WASHINGTON, IL	2009	<u>2</u>
		33
WASHINGTON PARK, IL	2002	1
WASHINGTON PARK, IL	2004	3
WASHINGTON PARK, IL	2009	<u>1</u>
		5
WATERLOO, IL	2002	1
WATERLOO, IL	2003	1

City, State	Year	Total
WATERLOO, IL	2004	1
WATERLOO, IL	2006	1
WATERLOO, IL	2008	2
		<hr/> 6
WATERMAN, IL	2005	1
		<hr/> 1
WAUCONDA, IL	2002	1
WAUCONDA, IL	2003	1
WAUCONDA, IL	2004	1
WAUCONDA, IL	2005	2
WAUCONDA, IL	2007	1
WAUCONDA, IL	2008	1
		<hr/> 7
WAUKEGAN, IL	2003	2
WAUKEGAN, IL	2004	3
WAUKEGAN, IL	2005	2
WAUKEGAN, IL	2006	1
WAUKEGAN, IL	2008	1
		<hr/> 9
WAUKESHA, WI	2003	2
WAUKESHA, WI	2006	1
		<hr/> 3
WAYNE, IL	2008	1
		<hr/> 1
WEBSTER, NY	2009	1
		<hr/> 1
WEBSTER GROVES, MO	2005	2
WEBSTER GROVES, MO	2007	1
		<hr/> 3
WELDON, IL	2008	1
		<hr/> 1
WENTZVILLE, MO	2002	1
WENTZVILLE, MO	2003	3
WENTZVILLE, MO	2004	2
WENTZVILLE, MO	2006	1
WENTZVILLE, MO	2007	5
WENTZVILLE, MO	2009	1
		<hr/> 13
WEST ALTON, MO	2003	1
		<hr/> 1
WEST BEND, WI	2007	1
		<hr/> 1
WEST CHICAGO, IL	2002	1
WEST CHICAGO, IL	2003	1
WEST CHICAGO, IL	2004	2
WEST CHICAGO, IL	2005	1
WEST CHICAGO, IL	2006	3
WEST CHICAGO, IL	2007	2
WEST CHICAGO, IL	2008	1
		<hr/> 11

City, State	Year	Total
WEST DUNDEE, IL	2003	1
WEST DUNDEE, IL	2004	1
WEST DUNDEE, IL	2005	1
WEST DUNDEE, IL	2009	<u>1</u>
		4
WEST PEORIA, IL	2003	1
WEST PEORIA, IL	2005	1
WEST PEORIA, IL	2006	2
WEST PEORIA, IL	2007	1
WEST PEORIA, IL	2008	<u>1</u>
		6
WESTCHESTER, IL	2004	1
WESTCHESTER, IL	2005	2
WESTCHESTER, IL	2007	<u>2</u>
		5
WESTERN SPRINGS, IL	2004	1
WESTERN SPRINGS, IL	2005	<u>2</u>
		3
WESTLAND, MI	2006	1
WESTLAND, MI	2007	<u>1</u>
		2
WESTMONT, IL	2003	3
WESTMONT, IL	2004	2
WESTMONT, IL	2005	2
WESTMONT, IL	2008	<u>2</u>
		9
WEVER, IA	2009	<u>1</u>
		1
WHAT CHEER, IA	2006	<u>1</u>
		1
WHEATON, IL	2003	2
WHEATON, IL	2004	3
WHEATON, IL	2005	4
WHEATON, IL	2006	3
WHEATON, IL	2007	6
WHEATON, IL	2008	6
WHEATON, IL	2009	<u>2</u>
		26
WHEELING, IL	2005	3
WHEELING, IL	2006	2
WHEELING, IL	2008	1
WHEELING, IL	2009	<u>1</u>
		7
WHITE HALL, IL	2007	<u>1</u>
		1
WHITESIDE, MO	2006	<u>1</u>
		1
WHITING, IN	2005	1
WHITING, IN	2007	<u>1</u>
		2

City, State	Year	Total
WICKLIFFE, KY	2008	<u>1</u>
		1
WILDWOOD, MO	2003	2
WILDWOOD, MO	2004	1
WILDWOOD, MO	2005	2
WILDWOOD, MO	2006	4
WILDWOOD, IL	2008	1
WILDWOOD, MO	2009	<u>1</u>
		11
WILLIAMSVILLE, IL	2006	1
WILLIAMSVILLE, IL	2009	<u>1</u>
		2
WILLOW SPRINGS, IL	2002	2
WILLOW SPRINGS, IL	2003	<u>1</u>
		3
WILLOWBROOK, IL	2003	1
WILLOWBROOK, IL	2004	4
WILLOWBROOK, IL	2005	3
WILLOWBROOK, IL	2006	1
WILLOWBROOK, IL	2007	2
WILLOWBROOK, IL	2008	<u>1</u>
		12
WILMETTE, IL	2006	2
WILMETTE, IL	2007	1
WILMETTE, IL	2008	<u>1</u>
		4
WILMINGTON, IL	2003	3
WILMINGTON, IL	2004	1
WILMINGTON, IL	2005	2
WILMINGTON, IL	2006	3
WILMINGTON, IL	2007	1
WILMINGTON, IL	2008	1
WILMINGTON, IL	2009	<u>1</u>
		12
WILTON, IA	2007	<u>1</u>
		1
WINAMAC, IN	2005	<u>1</u>
		1
WINFIELD, MO	2003	4
WINFIELD, MO	2005	3
WINFIELD, IL	2006	1
WINFIELD, IL	2007	1
WINFIELD, IL	2008	<u>1</u>
		10
WINNEBAGO, IL	2003	1
WINNEBAGO, IL	2004	<u>1</u>
		2
WINNETKA, IL	2002	<u>1</u>
		1
WOLF LAKE, IL	2006	<u>1</u>
		1

City, State	Year	Total
WOOD DALE, IL	2002	1
WOOD DALE, IL	2005	2
WOOD DALE, IL	2006	1
WOOD DALE, IL	2007	3
WOOD DALE, IL	2008	3
		<hr/> 10
WOOD RIVER, IL	2003	2
WOOD RIVER, IL	2004	4
WOOD RIVER, IL	2005	4
WOOD RIVER, IL	2006	5
WOOD RIVER, IL	2007	3
WOOD RIVER, IL	2008	6
WOOD RIVER, IL	2009	2
		<hr/> 26
WOODHULL, IL	2004	1
		<hr/> 1
WOODLAWN, IL	2005	1
		<hr/> 1
WOODRIDGE, IL	2002	1
WOODRIDGE, IL	2003	6
WOODRIDGE, IL	2004	4
WOODRIDGE, IL	2005	1
WOODRIDGE, IL	2007	1
WOODRIDGE, IL	2008	3
		<hr/> 16
WOODSTOCK, IL	2003	1
WOODSTOCK, IL	2004	2
WOODSTOCK, IL	2006	1
WOODSTOCK, IL	2007	2
		<hr/> 6
WORDEN, IL	2004	1
WORDEN, IL	2005	1
WORDEN, IL	2006	2
WORDEN, IL	2007	1
WORDEN, IL	2009	1
		<hr/> 6
WORTH, IL	2003	4
WORTH, IL	2004	3
WORTH, IL	2006	1
		<hr/> 8
WRIGHT CITY, MO	2005	2
WRIGHT CITY, MO	2007	1
		<hr/> 3
WYANET, IL	2009	1
		<hr/> 1
WYOMING, IL	2005	1
		<hr/> 1
YATES CITY, IL	2005	1
		<hr/> 1
YORKVILLE, IL	2003	2

City, State	Year	Total
YORKVILLE, IL	2004	1
YORKVILLE, IL	2005	1
YORKVILLE, IL	2006	3
YORKVILLE, IL	2008	3
YORKVILLE, IL	2009	2
		<hr/> 12
ZION, IL	2003	1
ZION, IL	2004	1
ZION, IL	2008	1
		<hr/> 3
ZIONSVILLE, IN	2009	1
		<hr/> 1
Grand Total:		<hr/> <hr/> 6,769