

Table of Contents

I. Introduction	1
II. Chicago Murders from 1991 to 2008	2
Murder Totals in the City of Chicago.....	2
Murder Totals by Area and District	4
Murder Totals by Type of Location	6
Murder Clearances	12
Murder Totals by Day, Month, and Time.....	15
Murder Totals by Method	21
Murder Totals by Motive	24
Murder Victims	27
Murder Offenders.....	34
III. Conclusion.....	44

I. Introduction

The Crime Analysis Section of the Chicago Police Department's Detective Division houses a database with information pertaining to murders that occurred in Chicago. The database includes various types of information pertaining to each murder, including the following:

- The police area and district in which the murder occurred
- Clearances, or resolutions of murder investigations
- The type of geographic location where the victim was found (e.g., on the street, in a residence)
- The day, date, and time of the murder incident and of the victim's death
- The type of weapon used to commit the murder and, related to this, the method by which the victim was killed
- The motive that precipitated the murder
- Victim demographic information (race, age, sex, and whether the victim had a prior Chicago Police Department arrest record)
- Offender demographic information (race, age, sex, and whether the offender has a prior Chicago Police Department arrest record)
- For each murder incident, the number of offenders involved

Some of this information is initially entered into the database shortly following each murder incident. Additional information pertaining to the incident is periodically added as the Detective Division receives updated information. This report utilizes Detective Division data to examine the characteristics of 2008 murders, and annual murder trends from 1991 to 2008.¹

¹ The data for this report is only accurate as of the date in which it was extracted because the Detective Division database is updated daily. Data for this report was extracted on March 25, 2009.



II. Chicago Murders From 1991 to 2008

Murder Totals in the City of Chicago

Figure 1 shows that there were 511 murder victims in the City of Chicago in 2008. The 2008 total was 14.8% higher than the total in 2007, although 44.9% lower than the total for 1991.

FIGURE 1: NUMBER OF MURDER VICTIMS IN THE CITY OF CHICAGO, 1991 TO 2008

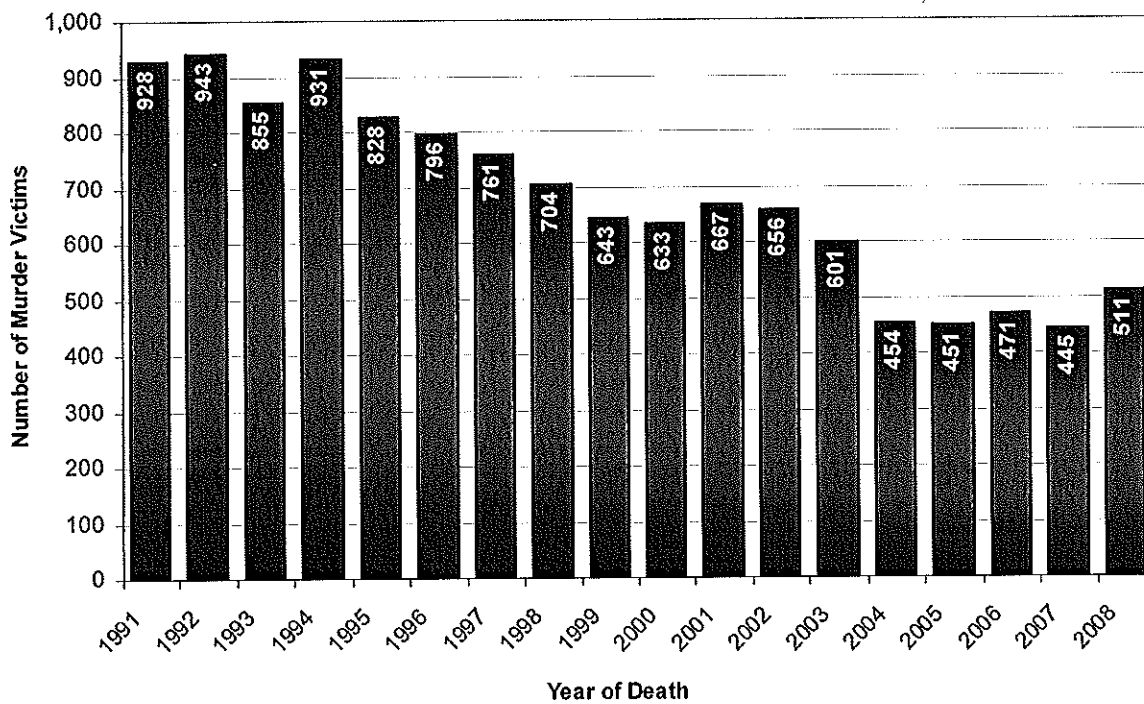
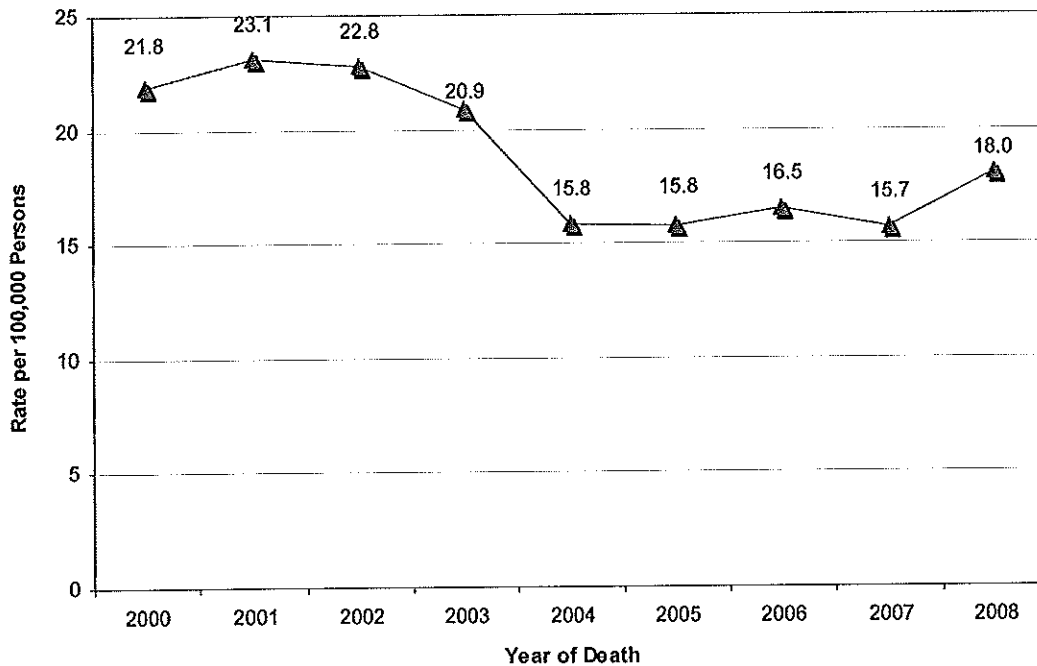


Figure 2 shows murder victim rates per 100,000 persons in the City of Chicago from 2000 to 2008.² Although the 2008 murder victim rate was numerically higher than the rate for 2007, the increase was not significant. As indicated in Figure 2, there was a significant decline between 2003 and 2004, after which the murder rate has remained relatively stable, with no significant increases or decreases.

FIGURE 2: MURDER VICTIM RATES FOR THE CITY OF CHICAGO, 2000 TO 2008



² Citywide rates were based on population estimates provided by Dr. Wesley Skogan, from the Northwestern University Institute for Policy Research.



Murder Totals by Area and District

Table 1 shows 2007 and 2008 murder victim totals by the police area and police district in which the victim was found. The greatest number of murders occurred in Areas 1 and Area 2.

**TABLE 1: 2007 AND 2008 MURDER VICTIM TOTALS
BY AREA AND DISTRICT**

District	2007	2008
Area 1		
02	17	21
07	40	46
08	29	36
09	32	27
21	3	4
Area 1 Total	121	134
Area 2		
03	32	41
04	29	44
05	35	28
06	38	40
22	17	17
Area 2 Total	151	170
Area 3		
18	2	5
19	2	4
20	1	2
23	11	2
24	11	8
Area 3 Total	27	21
Area 4		
01	3	3
10	27	39
11	41	46
12	6	11
13	10	7
Area 4 Total	87	106
Area 5		
14	6	12
15	22	30
16	5	3
17	4	5
25	22	30
Area 5 Total	59	80
Citywide Total	445	511

Table 2 compares 2007 and 2008 murder victim rates by district. Table 2 indicates that, from 2007 to 2008, murder victim rates decreased in only six police districts and remained unchanged in two districts. The remaining 17 districts experienced increases.

**TABLE 2: DISTRICT MURDER VICTIM RATES
PER 100,000 PERSONS, 2007 VS. 2008**

District	2007 Rate	2008 Rate	% Change	2007 Ranking	2008 Ranking
1	9.3	9.3	0.0%	16	15
2	35.4	43.7	23.5%	5	4
3	34.7	44.5	28.1%	6	3
4	21.7	32.9	51.7%	8	8
5	41.3	33.0	-20.0%	3	7
6	37.8	39.8	5.3%	4	6
7	46.0	52.9	15.0%	2	2
8	12.2	15.1	24.1%	13	12
9	19.5	16.5	-15.6%	10	11
10	19.7	28.5	44.4%	9	9
11	50.0	56.1	12.2%	1	1
12	8.2	15.1	83.3%	17	12
13	15.6	10.9	-30.0%	12	14
14	4.4	8.8	100.0%	19	16
15	30.4	41.4	36.4%	7	5
16	2.6	1.6	-40.0%	21	24
17	2.6	3.2	25.0%	21	21
18	1.8	4.5	150.0%	23	19
19	1.9	3.8	100.0%	22	20
20	1.0	2.0	100.0%	24	23
21	3.8	5.1	33.3%	20	18
22	16.6	16.6	0.0%	11	10
23	11.6	2.1	-81.8%	14	22
24	7.5	5.5	-27.3%	18	17
25	10.3	14.1	36.4%	15	13



Murder Totals by Type of Location

Table 3 and Table 4 show the number of 2008 murder victims by the type of geographic location where the victim was found. Table 3 shows totals for indoor locations. Table 4 shows totals for outdoor locations.

Note that these totals do not necessarily reflect where murders occurred. For instance, if a person was murdered in a motel and the body placed in an alley, the location would be recorded as alley because that is where the body was found. However, in most instances, the same location where the victim is found is also the location where the murder occurred.

In 2008, a majority of murder victims (78.7%) were found outdoors. The public way was the most common outdoor location. A residence (e.g., house, apartment, hotel room) was the most common indoor location.

**TABLE 3: 2008 MURDER VICTIMS
BY INDOOR LOCATION TYPE**

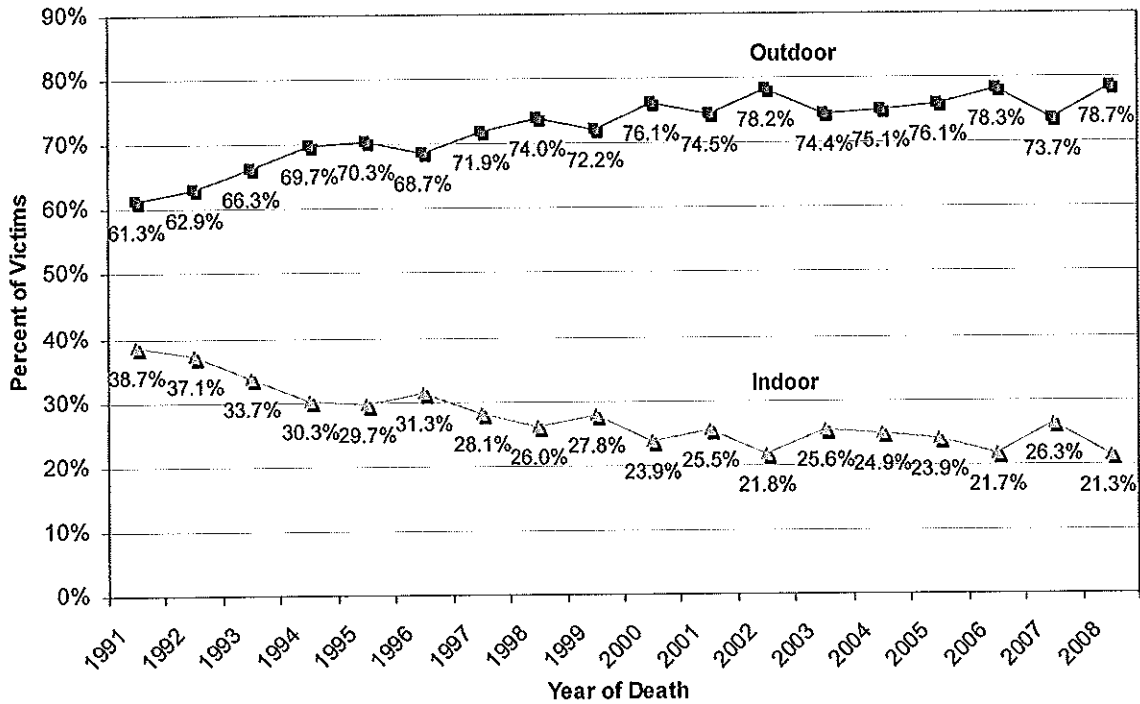
Structure	Description	Victims 2008
C.H.A. BUILDING	CHA Apartment	0
	CHA Hallway	1
	CHA Stairwell	<u>0</u>
		1
COMMERCIAL	Barber Shop / Beauty Salon	1
	Bank	0
	Factory	1
	Banquet Hall	0
	Liquor Store	1
	Garage/Auto Repair	0
	Office	0
	Restaurant	2
	Retail Store	7
	Warehouse	<u>0</u>
	12	
MISC. LOCATIONS	Abandoned Building	0
	Nursing Home	<u>1</u>
		1
PLACE OF ENTERTAINMENT	Tavern	<u>3</u>
		3
RESIDENCE	Apartment	37
	Basement	2
	Coach House	0
	Garage	4
	Hallway	6
	Hotel	1
	House	41
	Motel	1
Vestibule	<u>0</u>	
	92	
TOTAL INDOORS		109

**TABLE 4: 2008 MURDER VICTIMS
BY OUTDOOR LOCATION TYPE**

Structure	Description	Victims 2008
C.H.A. PROPERTIES	CHA Grounds	1
	CHA Parking Lot	2
		<u>3</u>
MISC. LOCATIONS	Car Wash	0
	Dumpster	1
	Gas Station Drive/Prop.	5
	Lake	0
	Park Property	6
	Parking Lot	7
	Railroad Property	2
	River Bank	0
	School Yard	2
	Vacant Lot	7
	Wooded Area	0
	<u>30</u>	
PUBLIC TRANSPORTATION	CTA "L" Platform	1
	CTA Bus	1
	Livery Auto	0
	<u>2</u>	
PUBLIC WAY	Alley	28
	Auto	59
	Street	251
	Trailer	0
	Truck	0
	<u>338</u>	
RESIDENTIAL AREA	Driveway	2
	Gangway	2
	Porch	17
	Stairwell	2
	Yard	6
	<u>29</u>	
TOTAL OUTDOORS		402

Figure 3 shows trends from 1991 to 2008 in the percentage of indoor and outdoor murder victims. Table 5 shows the corresponding totals. As illustrated in Figure 3, since 1991 there has been an overall increasing trend in the percentage of murders occurring outdoors.

FIGURE 3: PERCENTAGE OF MURDER VICTIMS FOUND OUTDOORS VERSUS INDOORS, 1991 TO 2008



**TABLE 5: INDOOR AND OUTDOOR MURDERS,
1991 TO 2008**

Year	Indoor	Outdoor	Total
1991	359	569	928
1992	350	593	943
1993	288	567	855
1994	282	649	931
1995	246	582	828
1996	249	547	796
1997	214	547	761
1998	183	521	704
1999	179	464	643
2000	151	482	633
2001	170	497	667
2002	143	513	656
2003	154	447	601
2004	113	341	454
2005	108	343	451
2006	102	369	471
2007	117	328	445
2008	109	402	511

Trends in the percentage of victims found at specific types of indoor and outdoor locations were also examined. Throughout the time period examined, the most common location types were the public way, residence, and outdoor miscellaneous locations. Figure 4 shows trends in the percentage of victims found at these three locations from 1991 to 2008. Table 6 shows the corresponding totals.

As indicated in Figure 4, there was an increasing trend in the percentage of murders occurring on the public way, while there was a slight, overall downward trend in the percentage of murders occurring in residences and very few changes overall in the percentage occurring at various other outdoor locations.

FIGURE 4: PERCENTAGE OF MURDER VICTIMS FOUND AT THREE LOCATION TYPES, 1991 TO 2008

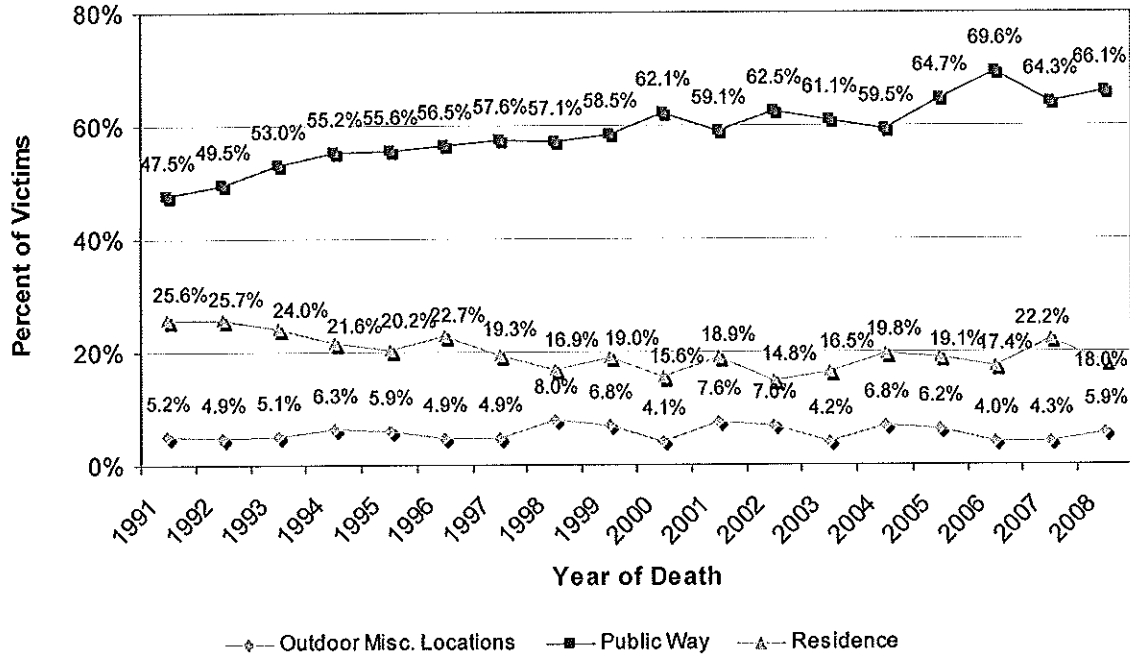


TABLE 6: MURDERS AT THREE LOCATION TYPES, 1991 TO 2008

Year	Outdoor Misc. Locations	Public Way	Residence	Total
1991	48	441	238	928
1992	46	467	242	943
1993	44	453	205	855
1994	59	514	201	931
1995	49	460	167	828
1996	39	450	181	796
1997	37	438	147	761
1998	56	402	119	704
1999	44	376	122	643
2000	26	393	99	633
2001	51	394	126	667
2002	46	410	97	656
2003	25	367	99	601
2004	31	270	90	454
2005	28	292	86	451
2006	19	328	82	471
2007	19	286	99	445
2008	30	338	92	511



Murder Clearances

Murders are cleared when an arrest is made and the arrestee is prosecuted. Murders may also be cleared exceptionally. In the Uniform Crime Reporting Handbook, the Federal Bureau of Investigation lists circumstances in which murders may be cleared exceptionally. To exceptionally clear cases police officials must have identified the suspect, have enough evidence to support the arrest and charging of the suspect, know where the suspect is, but some circumstance exists as to why the suspect cannot be arrested, charged, or prosecuted. These circumstances include, but are not limited to: (1) offender suicides, (2) double murders (i.e., two persons kill each other), (3) deathbed confessions, (4) instances when the offender is killed by the police or a citizen, (5) instances when an offender who is already in custody or serving a sentence confesses to the murder, (6) instances when an offender is prosecuted by state or local authorities in another city for a different offense or prosecuted in another city or state by the Federal government for an offense which may be the same, (7) instances when extradition is denied, (8) instances when the offender dies after a warrant is issued, but before being taken into custody, or (9) the prosecution refuses to prosecute the case.

Table 7 shows 2008 murder clearance data, broken down by area and district. The "Yes" and "No" columns in Table 7 indicate whether each 2008 murder occurring in the area or district was cleared. Murders not cleared remain open. In addition, Table 7 shows the number of murders occurring in previous years (from 1991 to 2007) that detectives cleared in 2008.

Figure 5 show clearance percentages for murders occurring from 1991 to 2008 as of the date when the data were queried regardless of when the murders were cleared. Table 8 provides the underlying data. Clearance percentages tended to decrease across the years examined. This trend is partly explainable by opportunity. For earlier years, there is a longer period of time during which the murder could have been cleared. For example, 1991 murders could have been cleared during the time period from the date of death in 1991 to present, whereas 2008 murders could only have been cleared during the time period from the date of death in 2008 to when the data were extracted.



TABLE 7: 2008 MURDER CLEARANCE DATA

Area	District	2008 Murders Cleared			Previous Year Murders Cleared in 2008**
		No*	Yes	% Cleared	
1	2	13	8	38.1%	3
	7	26	20	43.5%	11
	8	26	10	27.8%	5
	9	17	10	37.0%	12
	21	3	1	25.0%	4
Area 1 Total		85	49	36.6%	35
2	3	25	16	39.0%	4
	4	27	17	38.6%	6
	5	23	5	17.9%	6
	6	21	19	47.5%	4
	22	14	3	17.6%	3
Area 2 Total		110	60	35.3%	23
3	19	2	2	50.0%	0
	20	1	1	50.0%	1
	23	2	0	0.0%	3
	24	3	5	62.5%	4
Area 3 Total		8	8	50.0%	8
4	10	29	10	25.6%	3
	11	31	15	32.6%	12
	12	5	6	54.5%	2
	13	2	5	71.4%	2
Area 4 Total		67	36	35.0%	19
5	14	7	5	41.7%	1
	15	14	16	53.3%	9
	16	1	2	66.7%	0
	17	3	2	40.0%	0
	25	20	10	33.3%	3
Area 5 Total		45	35	43.8%	13
CCG***	1	2	1	33.3%	2
	18	3	2	40.0%	0
CCG Total		5	3	37.5%	2
Citywide Total		320	191	37.4%	98

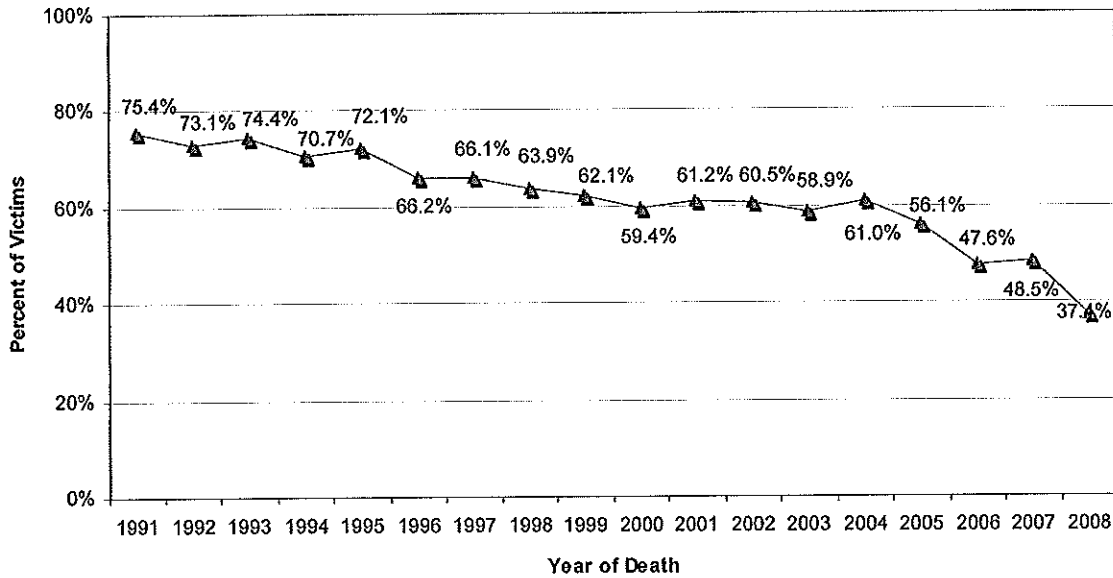
*Murders not cleared remain open.

** This report only examines murders that occurred from 1991 to 2008. It should be noted, however, that an additional 15 murders occurring prior to 1991 were also cleared in 2008.

***CCG refers to the Central Control Group, which is the downtown area of the City.



**FIGURE 5: MURDER CLEARANCES,
1991 TO 2008**



**TABLE 8: MURDER CLEARANCES,
1991 TO 2008**

Year	Cleared		Total
	Yes	No*	
1991	700	228	928
1992	689	254	943
1993	636	219	855
1994	658	273	931
1995	597	231	828
1996	527	269	796
1997	503	258	761
1998	450	254	704
1999	399	244	643
2000	376	257	633
2001	408	259	667
2002	397	259	656
2003	354	247	601
2004	277	177	454
2005	253	198	451
2006	224	247	471
2007	216	229	445
2008	191	320	511

* Murders not cleared remain open.



Murder Totals by Day, Month, and Time

Figure 6 shows 2008 murder victim totals, broken down by the day of the week on which victims were injured.³ In 2008, approximately half of murders (51.9%) occur on weekends (Friday, Saturday, or Sunday).

FIGURE 6: MURDER VICTIMS BY DAY OF WEEK INJURED, 2008

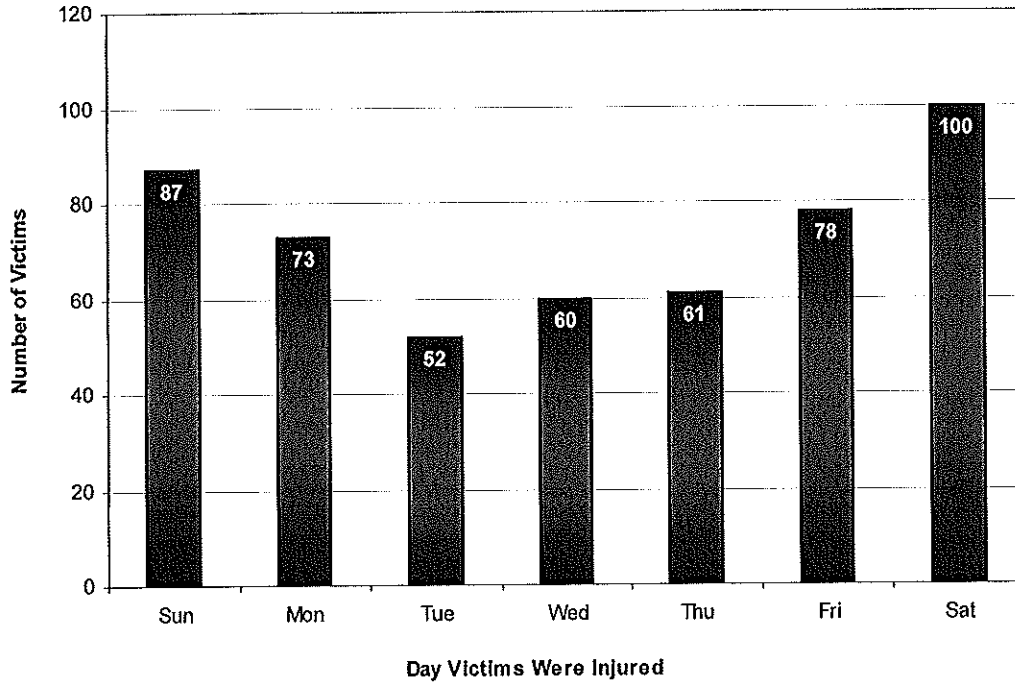


Figure 7 shows the percentage of murder victims found on weekends (Friday, Saturday, and Sunday) and weekdays (Monday thru Thursday) from 1991 to 2008. Table 9 provides the underlying data. As indicated in Figure 7, about half of victims were injured during weekends, and that percentage remained relatively stable throughout the time period examined.

³ Days are based on 24 hour periods. As indicated in Figure 10, a large number of murders occur between the hours of 1800 and 0359 hours. Therefore, the high number of murders occurring on Friday, Saturday, and Sunday likely occurred during early morning hours (i.e., 0001 to 0359 hours).



FIGURE 7: MURDER VICTIMS BY DAY OF WEEK INJURED, 1991 TO 2008

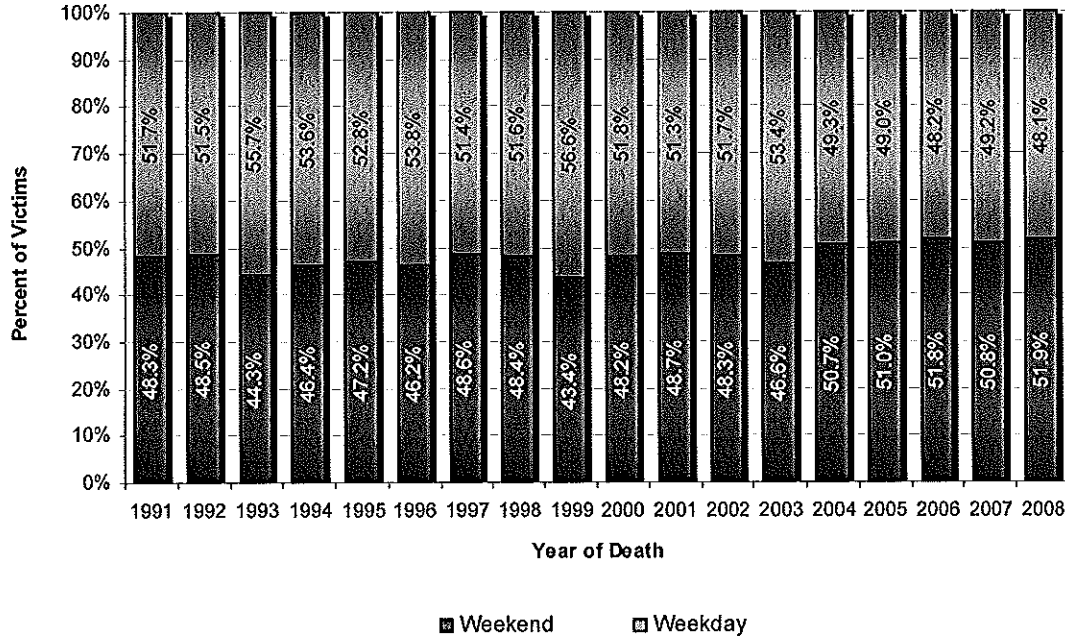


TABLE 9: WEEKEND AND WEEKDAY MURDER VICTIMS, 1991 TO 2008

Year	Weekday	Weekend	Total
1991	480	448	928
1992	486	457	943
1993	476	379	855
1994	499	432	931
1995	437	391	828
1996	428	368	796
1997	391	370	761
1998	363	341	704
1999	364	279	643
2000	328	305	633
2001	342	325	667
2002	339	317	656
2003	321	280	601
2004	224	230	454
2005	221	230	451
2006	227	244	471
2007	219	226	445
2008	246	265	511



Figure 8 shows 2008 murder totals broken down by the month during which victims were injured. The figure shows a tendency for murders to decrease during the colder months of the year and increase during the warmer months of the year.

FIGURE 8: MURDER VICTIMS BY MONTH OF INJURY, 2008

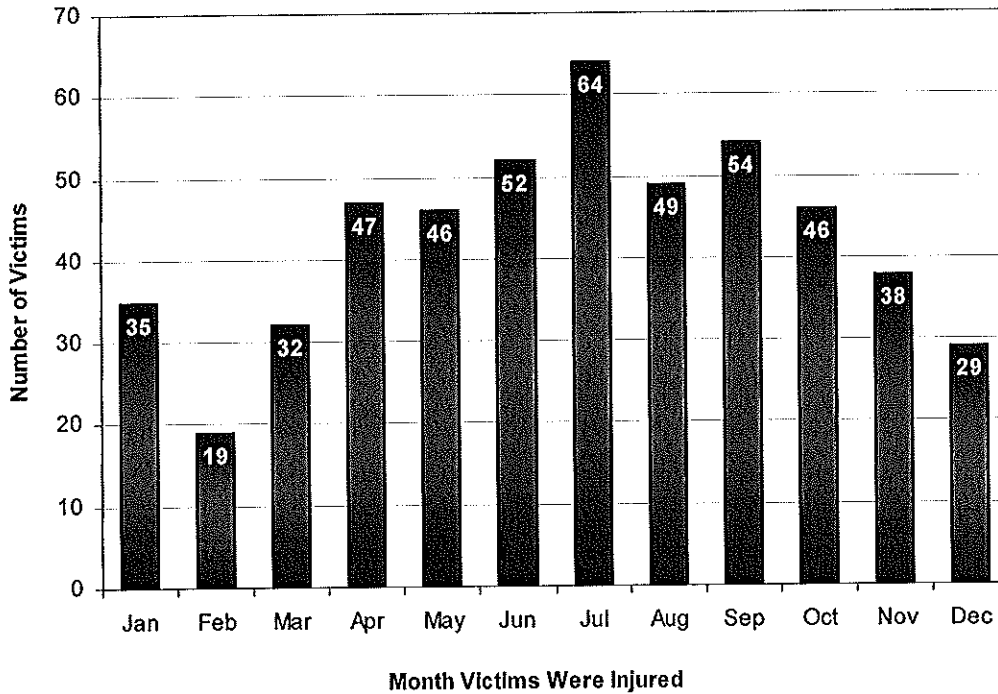


Figure 9 shows the percentage of murder victims injured for the four quarters of each year. Table 10 shows the number of murder victims found by quarter from 1991 to 2008. As shown in Figure 9, slightly higher percentage of murder victims were injured in quarters 2 and 3—which represent the warmest months of the year—across the years examined.



FIGURE 9: MURDER VICTIMS BY YEARLY QUARTER, 1991 TO 2008

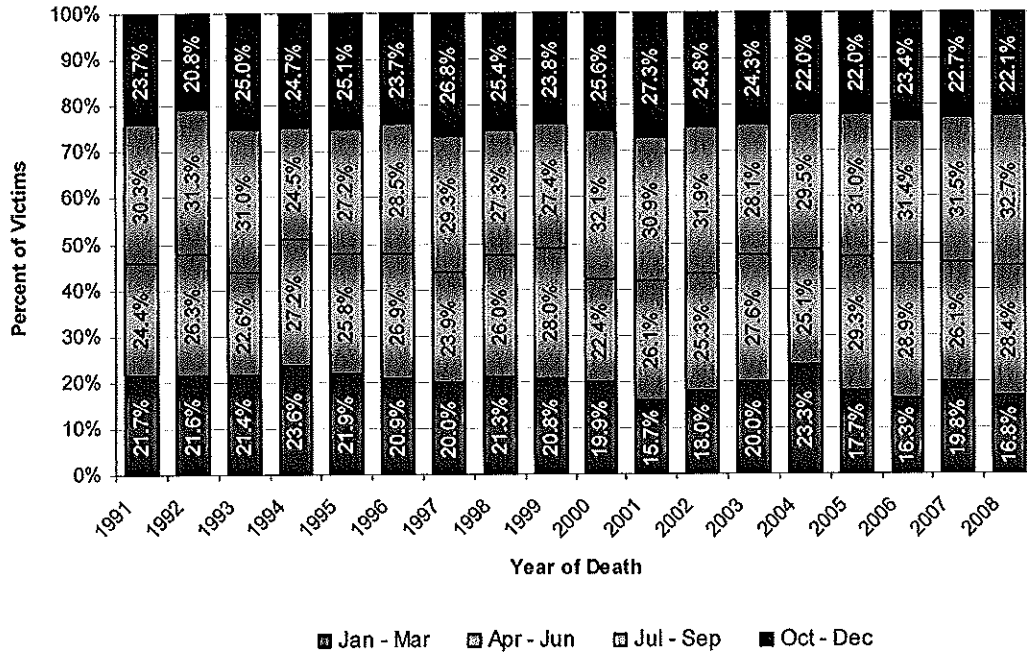


TABLE 10: MURDER VICTIMS BY QUARTER, 1991 TO 2008

Year	Quarter 1	Quarter 2	Quarter 3	Quarter 4	Total
1991	201	226	281	220	928
1992	204	248	295	196	943
1993	183	193	265	214	855
1994	220	253	228	230	931
1995	181	214	225	208	828
1996	166	214	227	189	796
1997	152	182	223	204	761
1998	150	183	192	179	704
1999	134	180	176	153	643
2000	126	142	203	162	633
2001	105	174	206	182	667
2002	118	166	209	163	656
2003	120	166	169	146	601
2004	106	114	134	100	454
2005	80	132	140	99	451
2006	77	136	148	110	471
2007	88	116	140	101	445
2008	86	145	167	113	511



Figure 10 shows 2008 murders broken down by the hour that victims were injured. As indicated in Figure 10, the majority of murders occurred between 1800 and 0359 hours.

FIGURE 10: 2008 MURDER VICTIMS BY HOUR OF INJURY

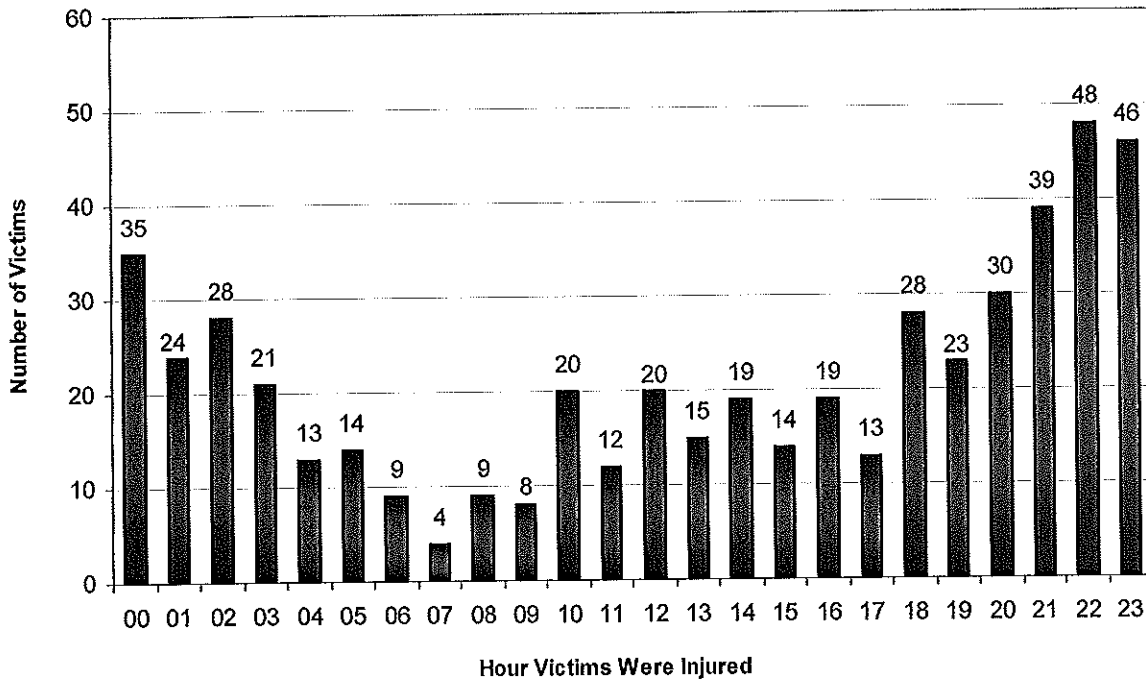


Figure 11 shows the percentage of murders from 1991 to 2008 that occurred during four six-hour segments. Table 11 provides the underlying data. As shown in Figure 11, throughout the time period examined, the majority of murder victims were injured during evening hours (i.e., between the hours of 1800 – 0559 hours).



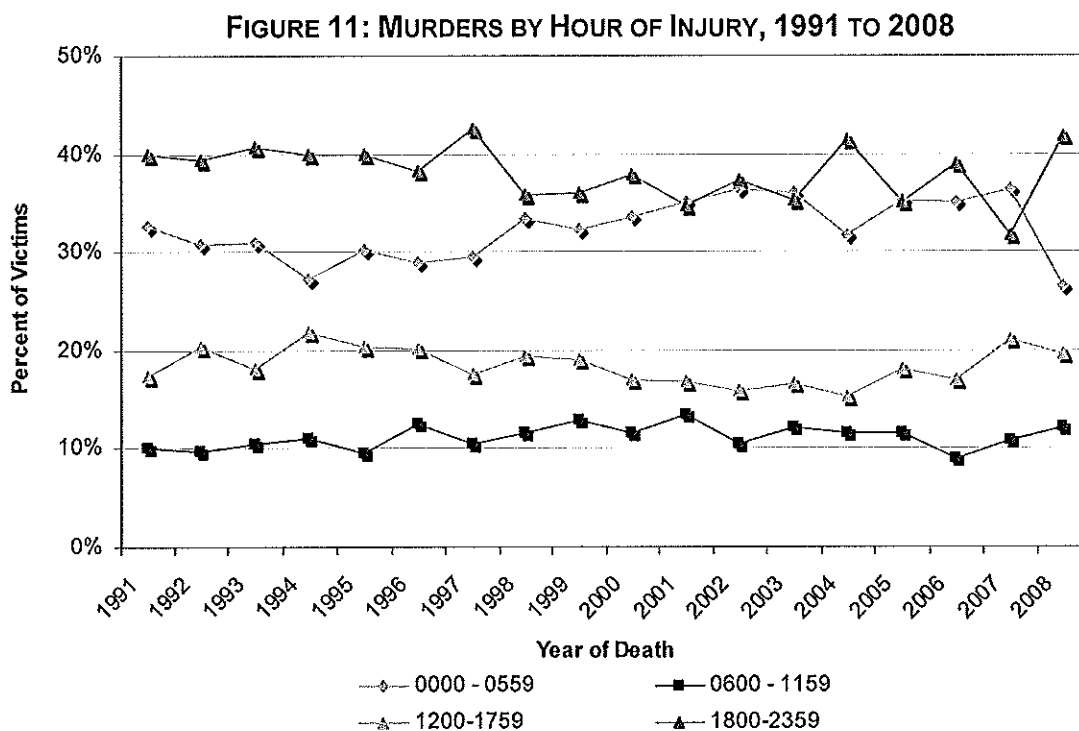


TABLE 11: MURDERS BY HOUR OF INJURY, 1991 TO 2008

Year	Hour of Injury				Total
	0000 - 0559	0600 - 1159	1200- 1759	1800- 2359	
1991	303	94	161	370	928
1992	290	91	191	371	943
1993	265	89	154	347	855
1994	254	103	203	371	931
1995	250	79	168	331	828
1996	230	100	161	305	796
1997	225	80	133	323	761
1998	235	81	136	252	704
1999	207	83	122	231	643
2000	213	73	107	240	633
2001	234	89	112	232	667
2002	238	69	104	244	655
2003	216	73	100	212	601
2004	144	52	69	188	453
2005	159	52	82	158	451
2006	165	42	80	184	471
2007	162	48	94	141	445
2008	135	62	100	214	511

