

Kosciuszko Bridge

The Kosciuszko Bridge spans Newtown Creek between the boroughs of Brooklyn and Queens. It is a part of Interstate 278 (the Brooklyn-Queens Expressway).

Year Built: 1939

Traffic Volume: 170,000 vehicles per day



Deck support stringer shows massive deterioration of the steel.

The bridge deck shows signs of significant decay. NYSDOT is investing hundreds of thousands of dollars to maintain the bridge and protect safety.



Gowanus Expressway

Year Built: Originally constructed in 1940 and widened to a six-lane Expressway in 1964.

Traffic Volume: 180,000 cars and trucks daily



Conditions like this one on the Gowanus Expressway have been repaired but are indicative of the significant maintenance efforts by NYSDOT and the need for investment to keep this critical highway safe and functioning.

Cross Bronx Expressway Viaduct over Amtrak and the Sheridan Expressway

Year Built: 1951

Traffic Volume: 123,000 cars and trucks daily



Deterioration of the roadway deck has allowed water to seep through causing failure of the bridge joint and bearing. The NYSDOT has installed shoring to support the structure and ensure safety. This is indicative of the sorts of bridge conditions requiring repair and replacement.

Bronx River Parkway Over Amtrak

Year Built: 1951

Traffic Volume: 107,000 vehicles daily



This structure shows advanced steel and deck deterioration. NYSDOT will have to invest significant resources to maintain the structure's integrity until they can commence full scale reconstruction.



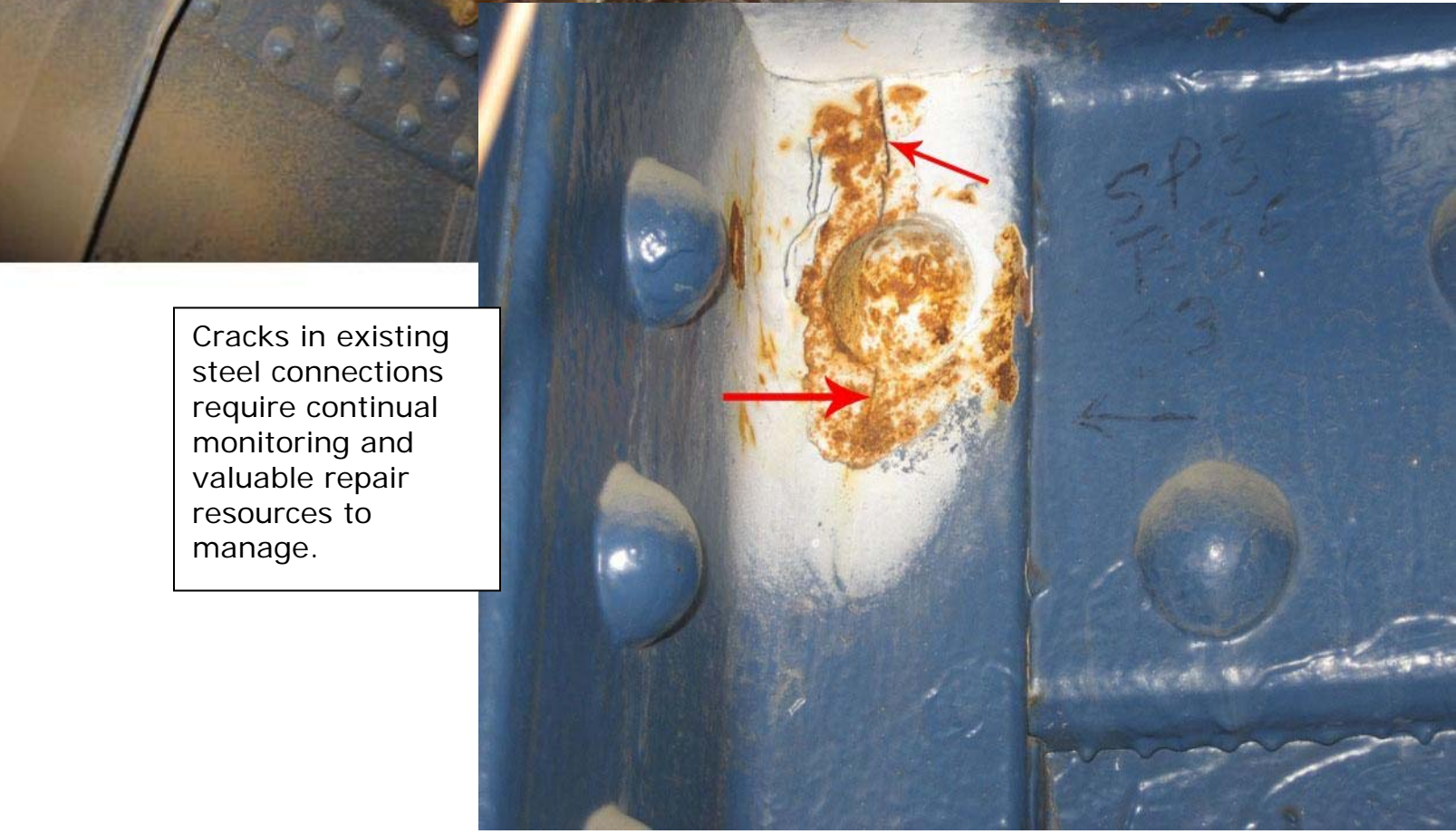
Major Deegan Expressway Bronx Terminal Viaduct

Year Built: 1954

Traffic Volume: 119,000 vehicles daily



The deck deterioration will require on-going repair effort.



Cracks in existing steel connections require continual monitoring and valuable repair resources to manage.

Major Deegan Expressway at Sedgwick Avenue

Year Built: 1955

Traffic Volume: 147,000 cars and trucks daily



Deterioration of the bottom flange of the bridge floor beam.

left fascia

Severe deterioration of concrete deck leading to punch-throughs and exposure of steel rebar support.

06/09/2008

← pier 1

Bruckner Boulevard Viaduct

Year Built: 1960

Traffic Volume: 113,000 vehicles daily



Failed joint causing floor beam deterioration

Bruckner Expressway Service Road

- Year Built: 1971
- Traffic Volume: 27,000 vehicles



Beginning of a punch-through of the roadway deck

150th Street over Belt Parkway

Year Built: 1939

Traffic Volume: 11,000 Bridges



Top of bridge: Deck holes covered by asphalt repairs



Bottom of Bridge: Chloride intrusion has deteriorated the deck structure.

Major Deegan Expressway Ramp South Bound

Year Built: 1976

Traffic Volume: 3,700 vehicles per day

