

SCHOOL	LEVEL	DATE	RATING
ALCOTT	ES	2/21/2008	GOOD
ALLEN	ES	9/7/2007	EXCELLENT
ALMEDA	ES	1/31/2008	GOOD
ANDERSON	ES		NO ASSESSMENT
ASHFORD	ES		NO ASSESSMENT
ASKEW	ES		NO ASSESSMENT
ATHERTON	ES		NO ASSESSMENT
ATTUCKS	MS		NO ASSESSMENT
AUSTIN	HS	2/28/2007	POOR
BARRICK	ES	9/14/2007	GOOD
BASTIAN	ES	9/28/2007	EXCELLENT
BASTIAN	ES	9/29/2009	EXCELLENT
BELL	ES	1/30/2008	POOR
BELLAIRE	HS	11/21/2008	POOR
BENAVIDEZ	ES		NO ASSESSMENT
BENBROOK	ES	12/7/2007	POOR
BERRY	ES	9/21/2007	POOR
BLACK	MS		NO ASSESSMENT
BLACKSHEAR	ES	11/2/2007	EXCELLENT
BONHAM	ES	4/17/2008	GOOD
BONNER	ES	5/28/2009	POOR
BRAEBURN	ES	5/30/2008	EXCELLENT
BRIARGROVE	ES		NO ASSESSMENT
BRISCOE	ES	3/12/2009	POOR
BROOKLINE	ES	9/29/2009	EXCELLENT
BROWNING	ES	12/14/2007	EXCELLENT
BROWNING	ES	9/5/2009	EXCELLENT
BRUCE	ES	12/6/2007	POOR
BURBANK	ES	10/19/2007	EXCELLENT
BURBANK	MS	1/30/2009	POOR
BURNET	ES	3/13/2009	EXCELLENT
BURRUS	ES	9/28/2007	POOR
BUSH	ES	1/12/2009	EXCELLENT
CAGE	ES	3/13/2009	POOR
CALDWELL-HINES	ES	12/10/2009	EXCELLENT
CARNEGIE	HS		NO ASSESSMENT
CARRILLO	ES	4/1/2009	GOOD
CHAVEZ	HS	3/24/2006	POOR
CHAVEZ	HS	5/29/2009	POOR
CLIFTON	MS	10/27/2009	POOR
CODWELL	ES	10/27/2009	EXCELLENT
CONDIT	ES	2/20/2008	POOR
CONDIT	ES	9/29/2009	EXCELLENT
COOK	ES	11/16/2007	GOOD

COOP	ES	11/16/2007	EXCELLENT
CORNELIUS	ES	10/17/2009	EXCELLENT
CRAWFORD	ES	10/16/2007	EXCELLENT
CRESPO	ES	12/19/2006	POOR
CROCKETT	ES	12/18/2007	EXCELLENT
CROCKETT	ES	12/15/2009	POOR
CULLEN	MS	2/27/2007	GOOD
CUNNINGHAM	ES	12/15/2008	GOOD
CUNNINGHAM	ES	9/29/2009	GOOD
DAILY	ES	9/28/2007	EXCELLENT
DAVILA	ES	1/31/2006	POOR
DAVILA	ES	5/14/2009	POOR
DAVIS	HS		NO ASSESSMENT
DEADY	MS	5/31/2006	POOR
DEBAKEY	HS	4/16/2008	POOR
DECHAUMES	ES	1/31/2008	EXCELLENT
DEZAVALA	ES	4/1/2009	EXCELLENT
DODSON	ES	12/17/2009	NO RATING
DOGAN	ES	12/7/2007	POOR
DOWLING	MS	12/19/2007	POOR
DURHAM	ES	1/11/2008	EXCELLENT
DURHAM	ES	10/28/2009	EXCELLENT
DURKEE	ES	1/31/2008	EXCELLENT
DURKEE	ES	10/30/2009	POOR
EASTWOOD ACADEMY	HS		NO ASSESSMENT
EDISON	MS	4/15/2009	POOR
ELIOT	ES	11/16/2007	GOOD
ELROD	ES	3/28/2008	EXCELLENT
EMERSON	ES	4/15/2009	POOR
FARIAS	ECC	10/30/2009	EXCELLENT
FIELD	ES	11/30/2007	GOOD
FIELD	ES	12/15/2009	EXCELLENT
FLEMING	MS	2/26/2009	POOR
FOERSTER	ES	1/29/2008	POOR
FONDREN	MS	5/28/2009	GOOD
FONVILLE	MS	2/26/2009	POOR
FONVILLE	MS	11/11/2009	POOR
FOSTER	ES	12/14/2009	EXCELLENT
FRANKLIN	ES		NO ASSESSMENT
FROST	ES	11/10/2009	EXCELLENT
FURR	HS		NO ASSESSMENT
GALLEGOS	ES		NO ASSESSMENT
GARCIA	ES	1/30/2009	GOOD
GARCIA	ES	12/17/2009	EXCELLENT
GARDEN OAKS	ES	11/28/2007	EXCELLENT
GARDEN OAKS	ES	10/28/2009	POOR
GARDEN VILLAS	ES	11/30/2007	POOR

GARDEN VILLAS	ES	11/20/2009	EXCELLENT
GOLFCREST	ES	5/28/2008	EXCELLENT
GOLFCREST	ES	11/10/2009	EXCELLENT
GORDON	ES	2/20/2008	EXCELLENT
GORDON	ES	10/29/2009	EXCELLENT
GRADY	MS	3/12/2009	POOR
GREGG	ES		NO ASSESSMENT
GREGORY-LINCOLN	ED CTR	11/15/2007	GOOD
GREGORY-LINCOLN	ED CTR	11/13/2009	EXCELLENT
GRIMES	ES	12/10/2009	EXCELLENT
GRISSOM	ES	12/10/2009	EXCELLENT
GROSS	ES	1/29/2008	EXCELLENT
HAI	HS		NO ASSESSMENT
HALPIN	ECC	11/27/2007	EXCELLENT
HAMILTON	MS	5/16/2008	POOR
HARRIS, J R	ES		NO ASSESSMENT
HARRIS, R P	ES		NO ASSESSMENT
HARTMAN	MS	10/19/2007	EXCELLENT
HARTSFIELD	ES	2/26/2008	EXCELLENT
HARVARD	ES	11/17/2009	EXCELLENT
HARVARD	ES	2/19/1008	EXCELLENT
HELMS	ES	11/30/2007	EXCELLENT
HENDERSON, J P	ES		NO ASSESSMENT
HENDERSON, N Q	ES	12/10/2007	EXCELLENT
HENRY	MS	2/26/2009	POOR
HEROD	ES		NO ASSESSMENT
HERRERA	ES	2/8/2008	POOR
HERRERA	ES	12/17/2009	POOR
HIGHLAND HEIGHTS	ES	3/28/2008	GOOD
HOBBY	ES	10/29/2007	GOOD
HOGG	MS		NO ASSESSMENT
HOHL	ES	2/28/2008	POOR
HOLLAND	MS		NO ASSESSMENT
HORN	ES	2/19/2008	POOR
HORN	ES	10/29/2009	EXCELLENT
HOUSTON GARDENS	ES	4/28/2008	EXCELLENT
HSLECJ	HS		NO ASSESSMENT
HSPVA	HS		NO ASSESSMENT
ISAACS	ES	2/15/2008	EXCELLENT
ISAACS	ES	9/29/2009	GOOD
JACKSON	MS	10/31/2006	POOR
JANOWSKI	ES	2/8/2008	EXCELLENT
JANOWSKI	ES	12/17/2009	EXCELLENT
JEFFERSON	ES	2/15/2008	POOR
JOHNSTON	MS	5/28/2009	POOR
JONES	HS		NO ASSESSMENT
JORDAN	HS		NO ASSESSMENT

KALEIDOSCOPE	MS		NO ASSESSMENT
KASHMERE	HS		NO ASSESSMENT
KASHMERE GARDENS	ES	4/28/2008	GOOD
KELSO	ES	12/11/2007	EXCELLENT
KENNEDY	ES	3/28/2008	EXCELLENT
KETELSEN	ES	10/15/2007	EXCELLENT
KEY	MS	3/31/2009	EXCELLENT
KOLTER	ES	12/14/2007	EXCELLENT
KOLTER	ES	11/13/2009	EXCELLENT
LAMAR	HS		NO ASSESSMENT
LANIER	MS		NO ASSESSMENT
LANTRIP	ES		NO ASSESSMENT
LAS AMERICAS	MS		NO ASSESSMENT
LAW	ES	12/19/2007	POOR
LEE	HS	5/28/2009	POOR
LEWIS	ES	4/26/2006	POOR
LIBERTY	HS		NO ASSESSMENT
LOCKHART	ES		NO ASSESSMENT
LONG	MS		NO ASSESSMENT
LONGFELLOW	ES	12/15/2008	EXCELLENT
LOOSCAN	ES	4/28/2008	EXCELLENT
LOOSCAN	ES	9/18/2009	POOR
LOVE	ES	1/30/2008	EXCELLENT
LOVETT	ES	11/21/2008	EXCELLENT
LOVETT	ES	9/29/2009	EXCELLENT
LYONS	ES	5/26/2009	EXCELLENT
MACGREGOR	ES		NO ASSESSMENT
MADING	ES		NO ASSESSMENT
MADISON	HS	5/28/2008	POOR
MARSHALL	MS	3/31/2009	POOR
MARTINEZ, C	ES	5/9/2008	EXCELLENT
MARTINEZ, R	ES	5/9/2008	EXCELLENT
MCDADE	ES	2/15/2008	EXCELLENT
MCNAMARA	ES	4/21/2008	POOR
MCREYNOLDS	ES	3/31/2009	GOOD
MEMORIAL	ES	2/28/2008	EXCELLENT
MILBY	HS	1/31/2006	POOR
MILNE	ES	11/30/2007	POOR
MISTRAL	ECC	5/30/2008	EXCELLENT
MITCHELL	ES		NO ASSESSMENT
MONTGOMERY	ES		NO ASSESSMENT
MORENO	ES	1/30/2008	EXCELLENT
MORENO	ES	10/30/2009	EXCELLENT
NEFF	ES	2/25/2009	POOR
NORTHLINE	ES	5/9/2008	EXCELLENT
OAK FOREST	ES	9/10/2007	EXCELLENT
OATES	ES	5/23/2005	GOOD

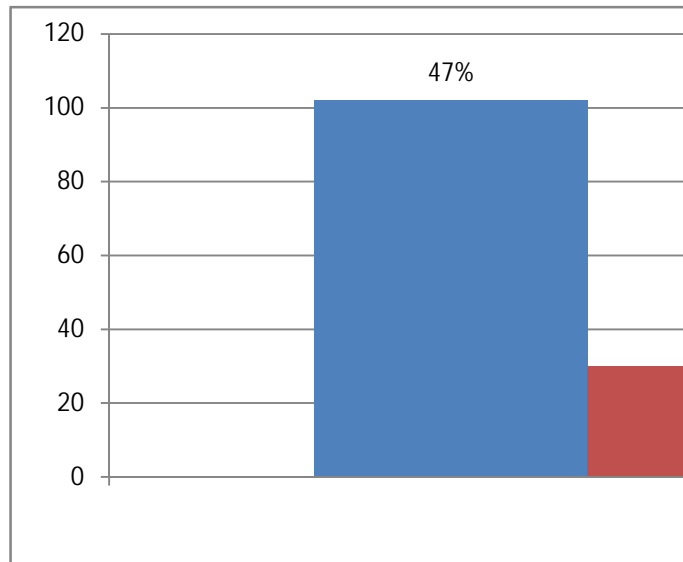
ORTIZ	MS	4/11/2006	POOR
OSBORNE	ES	10/31/2008	POOR
OSBORNE	ES	1/30/2009	POOR
OSBORNE	ES	11/11/2009	POOR
PAIGE	ES	12/15/2008	EXCELLENT
PARK PLACE	ES	2/17/2006	EXCELLENT
PARKER	ES	4/24/2009	EXCELLENT
PARKER	ES	11/13/2009	GOOD
PATTERSON	ES	3/31/2006	POOR
PECK	ES	5/16/2008	POOR
PERSHING	MS	10/22/2008	POOR
PETERSEN	ES		NO ASSESSMENT
PILGRIM	ES	11/13/2009	EXCELLENT
PIN OAK	MS	3/12/2009	POOR
PINEY POINT	ES	3/12/2009	EXCELLENT
PLEASANTVILLE	ES	1/19/2005	POOR
POE	ES	4/11/2008	EXCELLENT
POE	ES	10/24/2008	GOOD
PORT HOUSTON	ES		NO ASSESSMENT
PROJECT CHYRSALIS	MS		NO ASSESSMENT
PUGH	ES	3/28/2008	EXCELLENT
REAGAN	HS		NO ASSESSMENT
RED	ES	12/17/2007	POOR
RED	ES	10/29/2009	EXCELLENT
REVERE	MS	9/28/2007	POOR
REYNOLDS	ES	10/23/2007	EXCELLENT
RHOADS	ES		NO ASSESSMENT
RIVER OAKS	ES		NO ASSESSMENT
ROBERTS	ES		NO ASSESSMENT
ROBINSON	ES		NO ASSESSMENT
RODRIGUEZ	ES	11/21/2008	EXCELLENT
ROGERS	MULTI	4/15/2009	POOR
ROOSEVELT	ES	10/31/2008	EXCELLENT
ROSS	ES	5/26/2009	EXCELLENT
RUCKER	ES		NO ASSESSMENT
RYAN	MS	5/28/2008	EXCELLENT
SANCHEZ	ES	5/22/2006	POOR
SANDS POINT	ES	2/25/2009	EXCELLENT
SCARBOROUGH	ES	10/31/2008	EXCELLENT
SCARBOROUGH	HS		NO ASSESSMENT
SCOTT	ES	11/24/2008	EXCELLENT
SCOTT	ES	9/24/2009	EXCELLENT
SCROGGINS	ES	11/24/2008	GOOD
SEGUIN	ES		NO ASSESSMENT
SHADOWBRIAR	ES	1/12/2009	POOR
SHARPSTOWN	HS	10/19/2007	POOR
SHARPSTOWN	MS	10/23/2007	POOR

SHEARN	ES	12/17/2007	POOR
SHERMAN	ES	11/24/2008	EXCELLENT
SINCLAIR	ES	4/30/2008	GOOD
SMITH, E O	MULTI	12/15/2008	POOR
SMITH, K	ES	9/21/2007	EXCELLENT
SOUTH ALTERNATIVE	ES		NO ASSESSMENT
SOUTHMAYD	ES	3/22/2007	POOR
STERLING	HS		NO ASSESSMENT
STEVENS	ES	9/10/2007	GOOD
STEVENS	ES	11/17/2009	POOR
STEVENSON	ES	4/24/2008	EXCELLENT
STEVENSON	MS		NO ASSESSMENT
SUGAR GROVE	ES	4/25/2008	POOR
SUTTON	ES	5/16/2008	EXCELLENT
THE RICE SCHOOL	MULTI	10/24/2008	POOR
THOMAS	MS	2/8/2008	POOR
THOMPSON	ES	10/25/2007	GOOD
TIJERINA	ES		NO ASSESSMENT
TINSLEY	ES	11/26/2007	EXCELLENT
TRAVIS	ES	5/16/2008	EXCELLENT
TRAVIS	ES	11/19/2009	EXCELLENT
TWAIN	ES	12/15/2008	EXCELLENT
VALLEY WEST	ES	3/28/2008	EXCELLENT
WAINWRIGHT	ES		NO ASSESSMENT
WALNUT BEND	ES	9/28/2007	EXCELLENT
WALTRIP	HS	1/30/2008	POOR
WASHINGTON	HS	2/24/2009	POOR
WELCH	MS	3/28/2008	GOOD
WESLEY	ES	12/15/2008	EXCELLENT
WESLEY	ES	11/11/2009	EXCELLENT
WEST UNIVERSITY	ES		NO ASSESSMENT
WESTBRIAR	MS	1/12/2009	GOOD
WESTBURY	HS		NO ASSESSMENT
WESTSIDE	HS	1/12/2009	POOR
WHEATLEY	HS		NO ASSESSMENT
WHIDBY	ES		NO ASSESSMENT
WHITE	ES	10/23/2007	POOR
WHITTIER	ES		NO ASSESSMENT
WILLIAMS	MS	5/26/2009	POOR
WILSON	ES		NO ASSESSMENT
WINDSOR VILLAGE	ES	10/29/2007	POOR
WOODSON	MULTI	5/28/2008	POOR
WORTHING	HS		NO ASSESSMENT
YATES	HS	11/30/2007	GOOD
YOUNG	ES	2/21/2008	GOOD

Total Assessments

Excellent	102	47%
Good	30	14%
Poor	82	38%
Total	214	

*1 school had no rating



Total Schools

Excellent	82	46%
Good	25	14%
Poor	72	40%
Total	179	

*1 school had no rating

** 62 schools had no assessment

